



NEWS RELEASE

February 24, 2021

Notice Regarding Establishment of the Sustainability Promotion Department

Today, Mitsui Mining & Smelting Co., Ltd. (President: Keiji Nishida; “Mitsui Kinzoku”) announced that it will reorganize its corporate divisions on April 1, 2021, to improve operational effectiveness.

Purpose

Until now, Mitsui Kinzoku’s sustainability efforts have been coordinated by a CSR Office within its Corporate Communications Department. From now on, the company will think and act in a more integrated way, ensuring that its sustainability values are integrated at all levels of business throughout the organization.

Details

Mitsui Kinzoku will establish a new corporate department, the Sustainability Promotion Department, to drive sustainability efforts under this new approach. The CSR Office will be merged into the Sustainability Promotion Department.

Please see the appended organizational chart.

(For more details, please contact the following office)

Corporate Communications Department

Corporate Planning & Control Sector

Mitsui Mining & Smelting Co., Ltd.

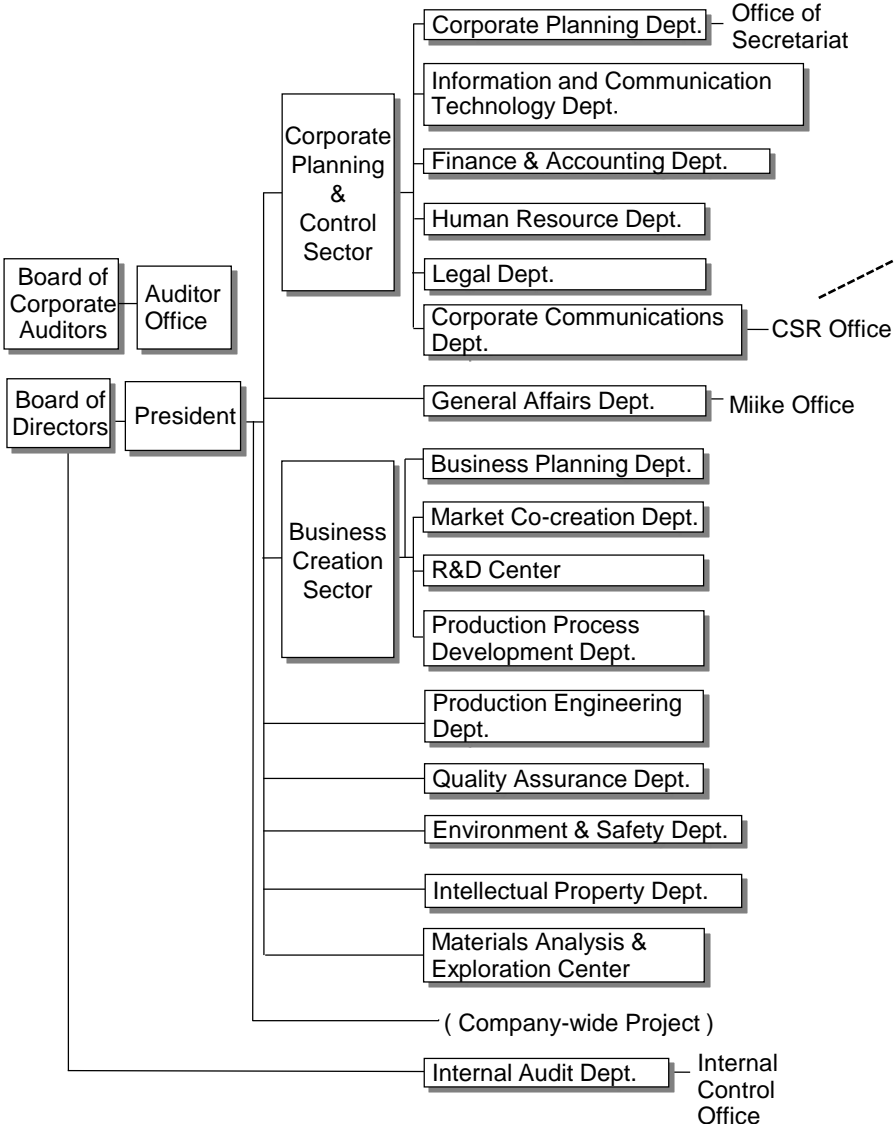
E-mail ; PR@mitsui-kinzoku.com

MITSUI KINZOKU

Company Organization

(Corporate)

(Before Change)



(After April 1, 2021)

