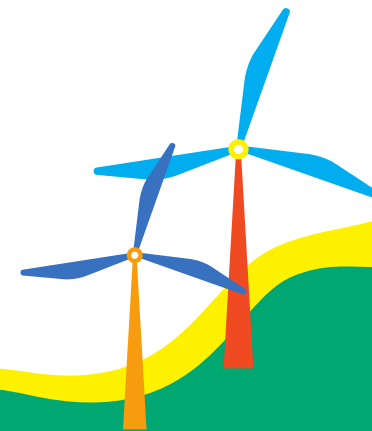


# **mitsui kinzoku**

(Mitsui Kinzoku Company, Limited TSE5706)

*FY2025 Results & FY2026 Forecast*

*May 13, 2026*





## Results of FY2025 and Forecast of FY2026

- FY2025 YoY: Driven by strong demand in the high-end server market, including AI servers, sales volumes of major products such as VSP™ and MicroThin™ increased in the Engineered Materials segment. In the Metals segment, the weak yen and high metal prices, together with as well as significant favorable inventory effects associated with these factors. As a result, net sales, operating profit, ordinary profit, and net profit all increased, reaching record highs.
- As for the FY2026 forecast, major products in the Engineered Materials, including VSP™ and MicroThin™, are expected to remain strong. However, profits are forecast to decrease year on year due to the disappearance of favorable factors in the Metal segment in the previous fiscal year, including yen depreciation, higher metal prices, related inventory effects, and the impact of large-scale scheduled maintenance.

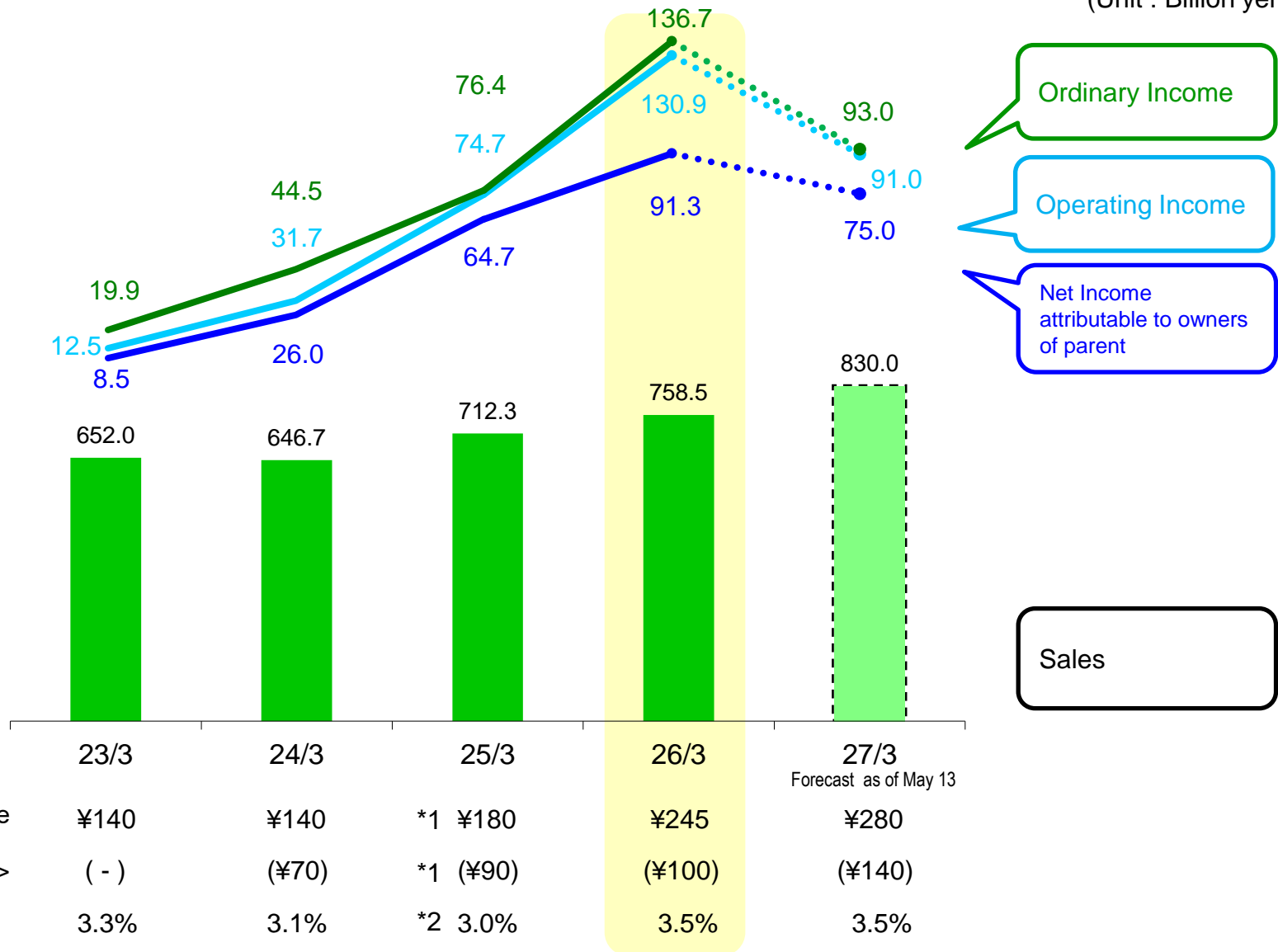
(Unit: Billion yen)

	Results			Forecast		
	2025 Results	2024 Results	Difference (25-24)	2026 Forecast (May 13)	2025 Results	Difference (26-25)
<b>Net Sales</b>	758.5	712.3	46.2 6.5%	830.0	758.5	71.5 9.4%
<b>Operating Income</b>	130.9	74.7	56.2 75.1%	91.0	130.9	-39.9 -30.5%
<b>Ordinary Income</b>	136.7	76.4	60.3 79.0%	93.0	136.7	-43.7 -32.0%
Net income attributable to owners of parent	91.3	64.7	26.6 41.1%	75.0	91.3	-16.3 -17.8%



# Sales and Earnings

(Unit : Billion yen)



Dividend per share	¥140	¥140	*1 ¥180	¥245	¥280
<Interim Dividend>	( - )	(¥70)	*1 (¥90)	(¥100)	(¥140)
DOE	3.3%	3.1%	*2 3.0%	3.5%	3.5%

\*1 Including the 150th Anniversary commemorative dividend of 15 yen.

\*2 Excluding the 150th Anniversary commemorative dividend of 15 yen.

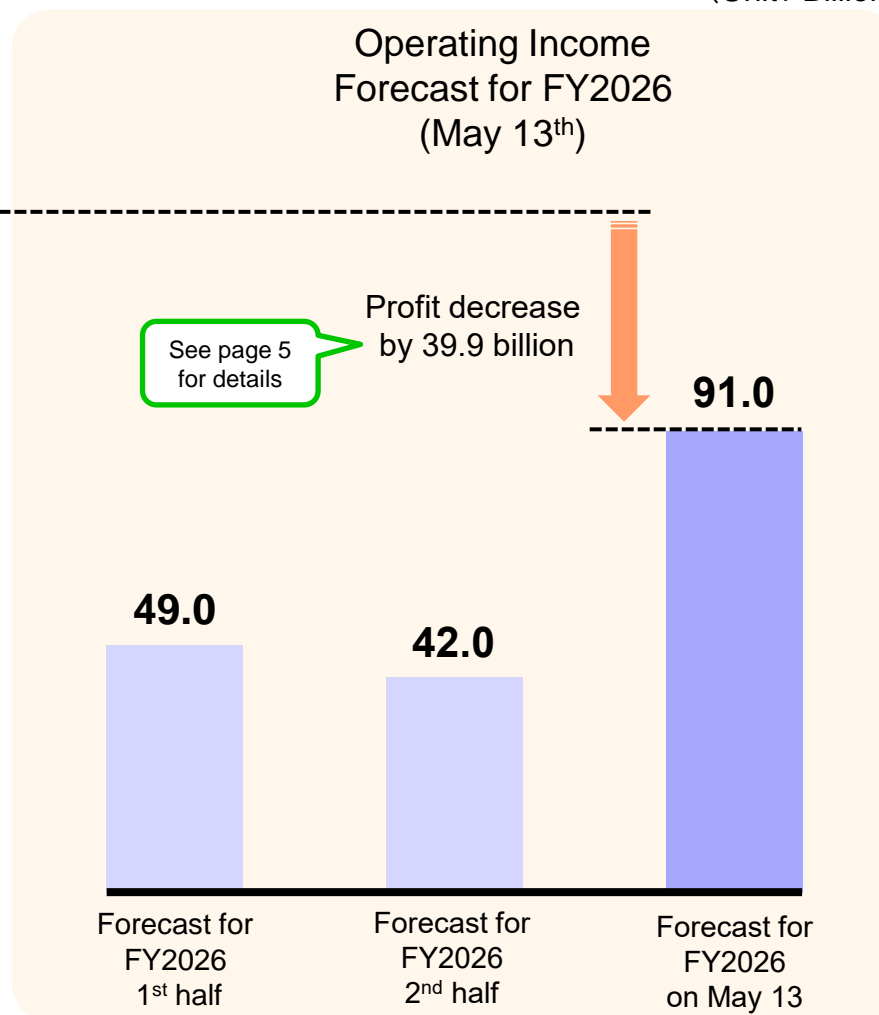
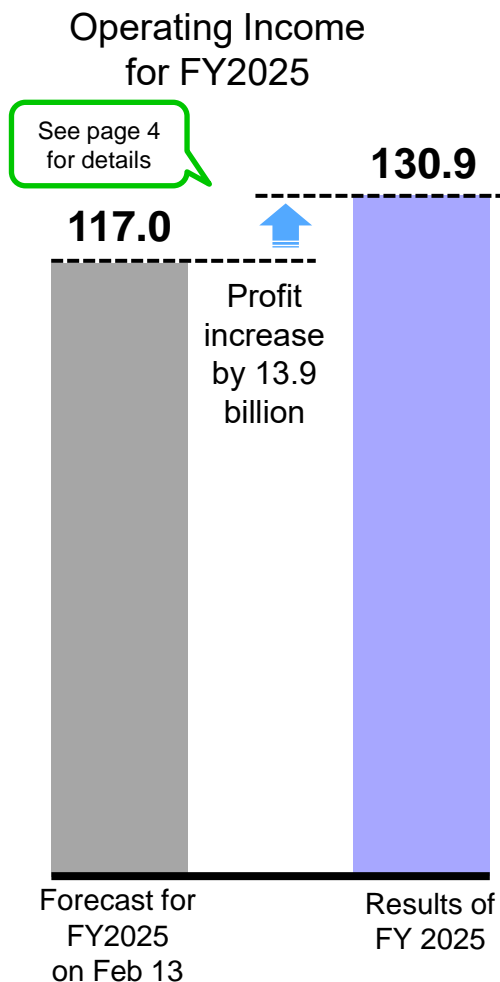
# FY2025 Operating Income and FY2026 Operating Income Forecast

We promote the well-being of the world through a spirit of exploration and diverse technologies.



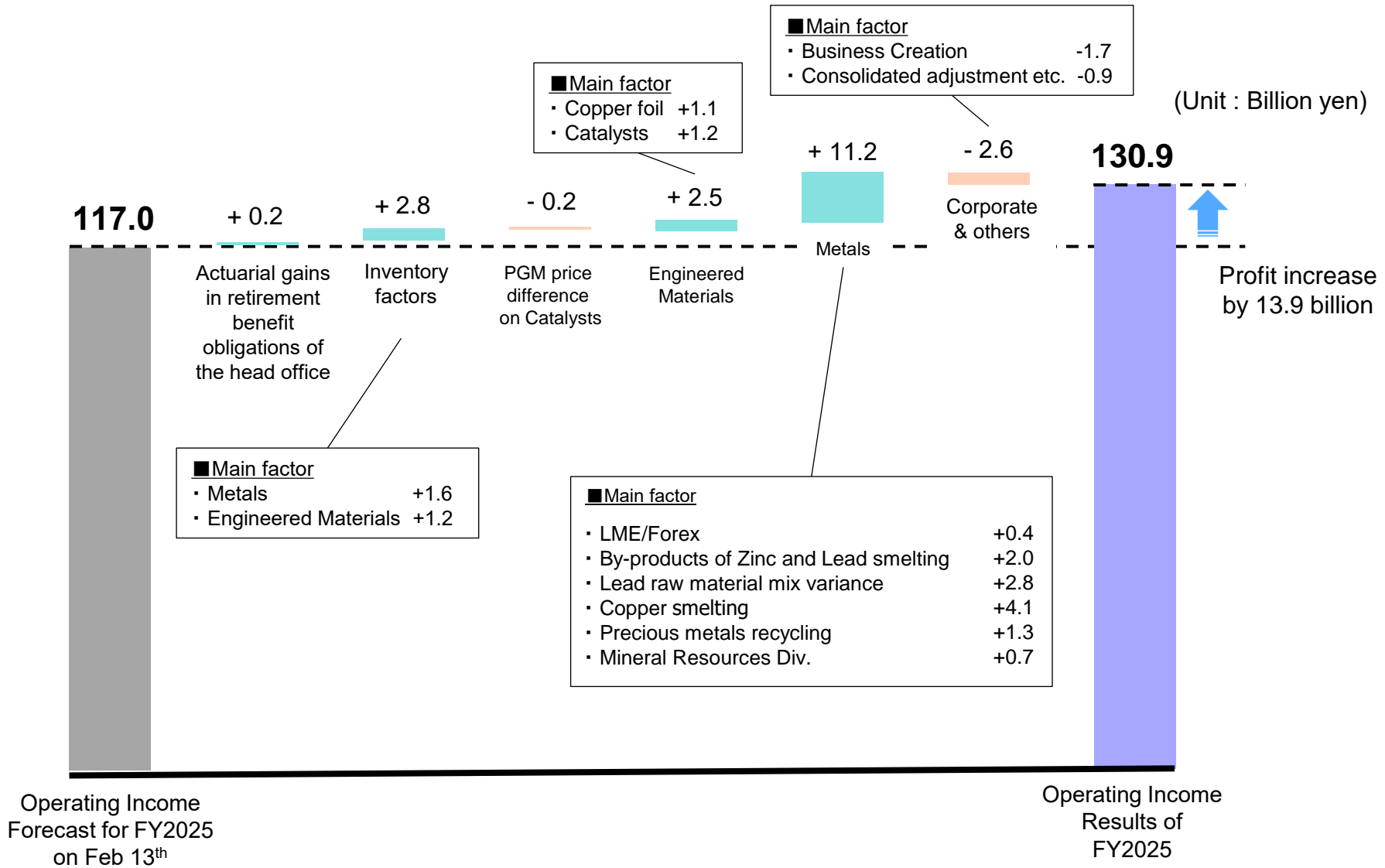
Operating income of FY2025 is 130.9 billion, by 13.9 billion better than forecast for FY2025 Announced on February 13<sup>th</sup>. Operating income forecast for FY2026 is 91.0 billion, by 39.9 billion less than the operating income of FY2025.

(Unit: Billion yen)

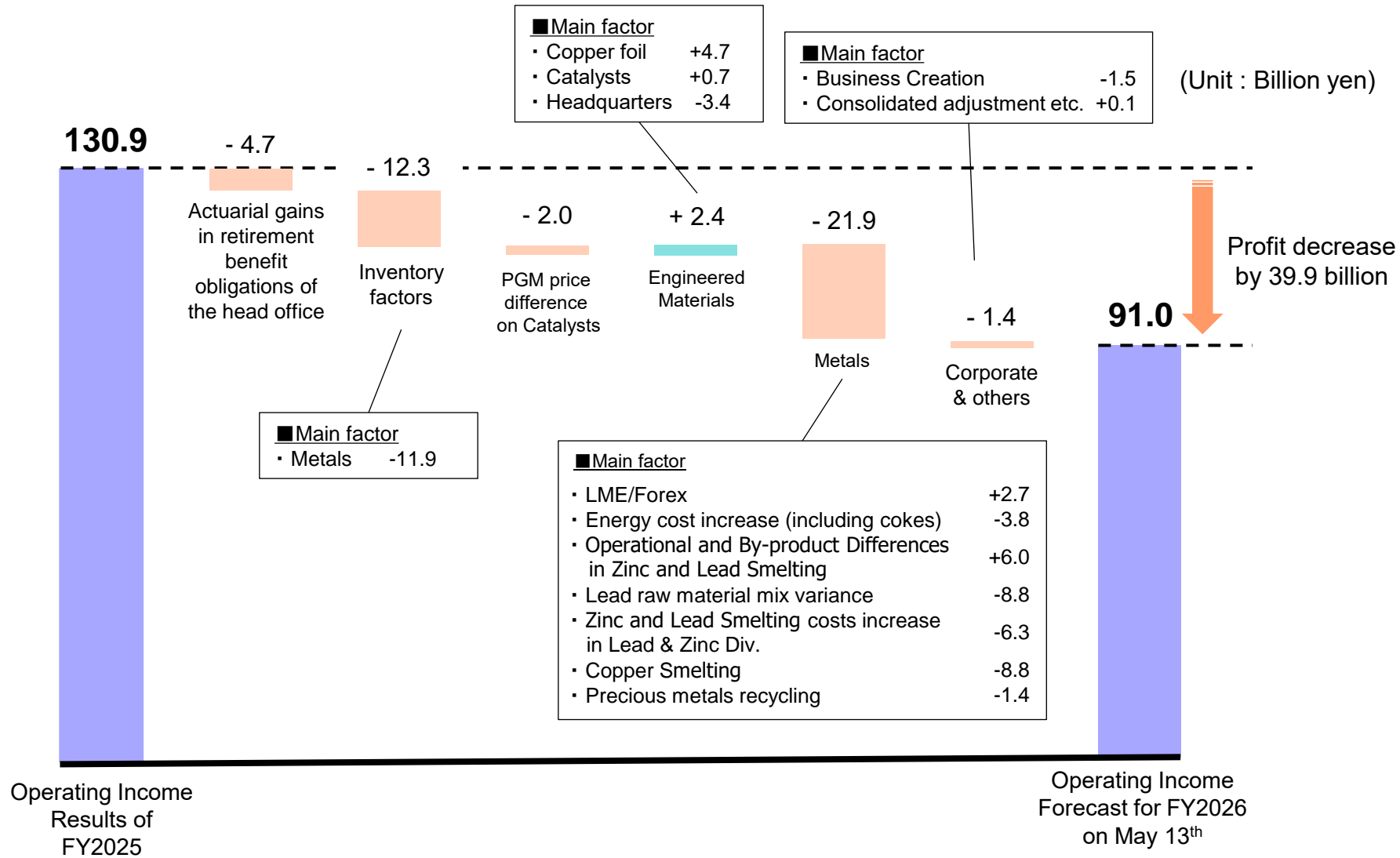




# FY2025 Operating Income



# FY2026 Operating Income Forecast

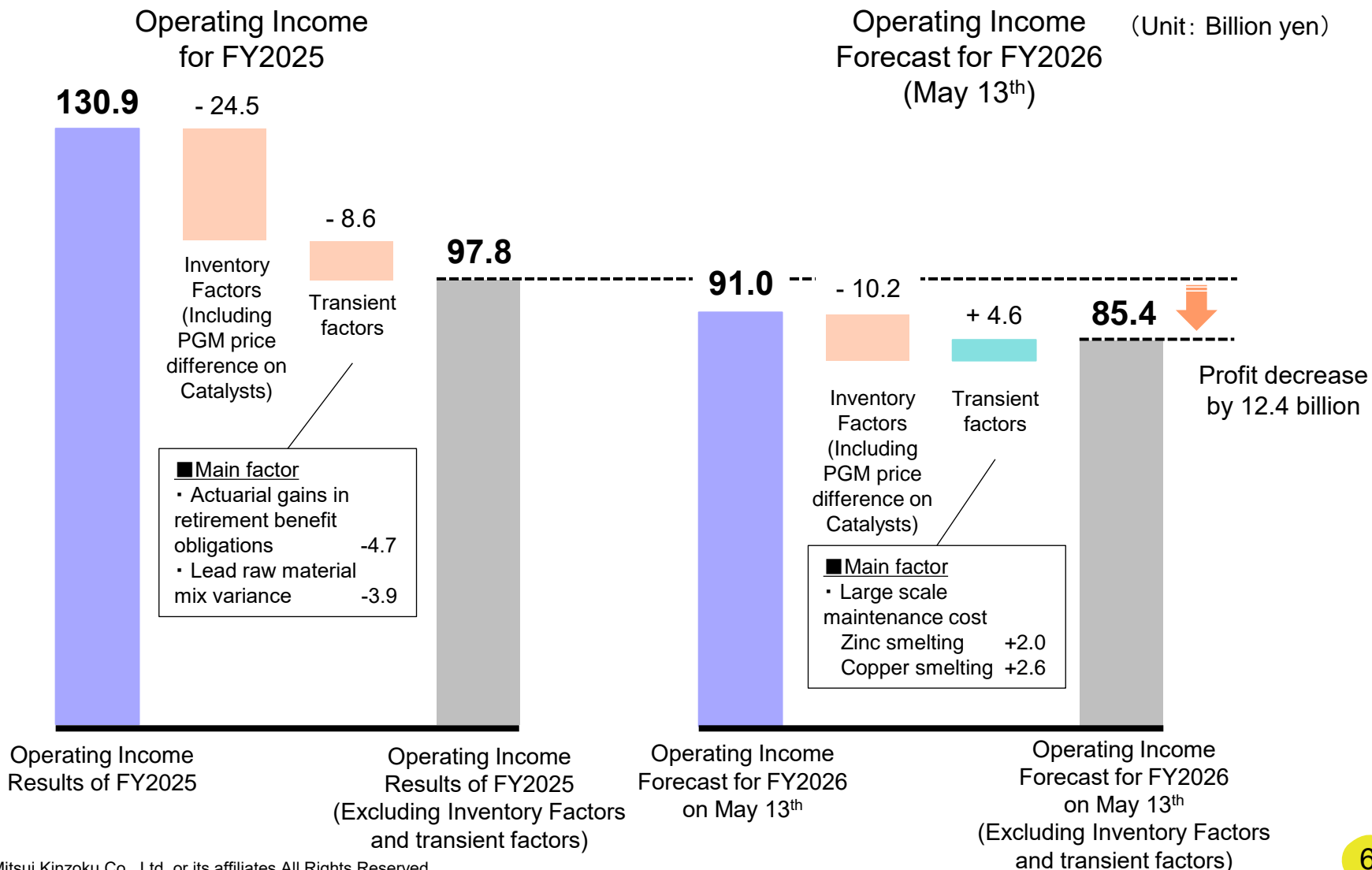


# FY2025 and FY2026 Operating Income Excluding Inventory Factors and transient factors

We promote the well-being of the world  
through a spirit of exploration  
and diverse technologies.



Excluding inventory factors and transient factors, FY2026 operating profit forecast is expected to decline by only 12.4 billion year on year.





# Statements of income

(Unit : Billion yen)

	Results			Forecast			
	2025 Results	2024 Results	Difference (25-24)	2026 Forecast (May 13)	Difference (26-25)	1st Half Forecast (May 13)	2nd Half Forecast (May 13)
<b>Net Sales</b>	758.5	712.3	46.2 6.5%	830.0	71.5 9.4%	410.0	420.0
Cost of sales	555.9	562.1	-6.2 -1.1%	-	-	-	-
<b>Gross Profit</b>	202.6	150.2	52.4 34.9%	-	-	-	-
SG&A expenses	71.7	75.5	-3.8 -5.0%	-	-	-	-
<b>Operating Income</b>	130.9	74.7	56.2 75.1%	91.0	-39.9 -30.5%	49.0	42.0
Non-operating income/expenses	5.8	1.7	4.2	2.0	-3.8	1.0	1.0
<b>Ordinary Income</b>	136.7	76.4	60.3 79.0%	93.0	-43.7 -32.0%	50.0	43.0
Extraordinary profit/losses- net	-19.3	4.4	-23.6	3.7	22.9	-0.8	4.5
<b>Net Income before income taxes</b>	117.5	80.8	36.7 45.4%	96.7	-20.8 -17.7%	49.2	47.5
Income taxes & minority interests	26.2	16.1	10.1	21.7	-4.5	12.2	9.5
<b>Net income attributable to owners of parent</b>	91.3	64.7	26.6 41.1%	75.0	-16.3 -17.8%	37.0	38.0

# Segment Information by Business Unit

We promote the well-being of the world  
through a spirit of exploration  
and diverse technologies.



(Unit : Billion yen)

■ Sales	Results			Forecast			
	2025 Results	2024 Results	Difference (25-24)	2026 Forecast (May 13)	Difference (26-25)	1st Half Forecast (May 13)	2nd Half Forecast (May 13)
Engineered Materials	328.4	246.2	82.3 33.4%	379.0	50.6 15.4%	190.0	189.0
Metals	376.7	325.0	51.7 15.9%	434.0	57.3 15.2%	213.0	221.0
Corporate	187.7	231.8	-44.1 -19.0%	132.0	-55.7 -29.7%	66.0	66.0
Adjustment	-134.3	-90.6	-43.7	-115.0	19.3	-59.0	-56.0
Consolidated	758.5	712.3	46.2 6.5%	830.0	71.5 9.4%	410.0	420.0



## Segment Information by Business Unit

(Unit : Billion yen)

	Results			Forecast			
	2025 Results	2024 Results	Difference (25-24)	2026 Forecast (May 13)	Difference (26-25)	1st Half Forecast (May 13)	2nd Half Forecast (May 13)
<b>■ Operating income</b>							
Engineered Materials	67.5	41.8	25.7 61.5%	67.5	0.0 0.0%	34.5	33.0
Metals	70.8	41.8	29.0 69.5%	37.0	-33.8 -47.7%	22.0	15.0
Corporate	0.4	0.7	-0.4 -48.4%	-0.1	-0.5	-0.5	0.4
Business Creation	-7.5	-6.3	-1.1	-9.0	-1.5	-4.0	-4.9
Adjustment	-0.3	-3.2	2.9	-4.4	-4.1	-3.0	-1.5
<b>Consolidated</b>	<b>130.9</b>	<b>74.7</b>	<b>56.2</b> 75.1%	<b>91.0</b>	<b>-39.9</b> -30.5%	<b>49.0</b>	<b>42.0</b>
<b>■ Ordinary Income</b>							
Engineered Materials	66.5	40.3	26.2 65.0%	67.0	0.5 0.7%	34.5	32.5
Metals	75.1	44.5	30.6 68.7%	37.5	-37.6 -50.1%	22.5	15.0
Corporate	3.1	2.4	0.8 31.5%	0.8	-2.3 -74.6%	-0.2	1.0
Business Creation	-6.8	-6.4	-0.5	-7.5	-0.6	-4.0	-3.5
Adjustment	-1.2	-4.5	3.3	-4.8	-3.6	-2.8	-2.0
<b>Consolidated</b>	<b>136.7</b>	<b>76.4</b>	<b>60.3</b> 79.0%	<b>93.0</b>	<b>-43.7</b> -32.0%	<b>50.0</b>	<b>43.0</b>



# Variance analysis of operating income

(Unit : Billion yen)

	Operating Income			Details				
	FY2025	FY2024	Diff.	Volume	LME/Forex	Inventory Factor/ PGM price difference	Margin/ Cost	Total
Engineered materials	67.5	41.8	25.7	14.5	2.3	0.5	8.3	25.7
Metals	70.8	41.8	29.0	0.4	0.7	7.0	20.9	29.0
Corporate	0.4	0.7	-0.4	1.3	-0.8	-	-0.9	-0.4
Business Creation	-7.5	-6.3	-1.1	-	-	-	-1.1	-1.1
Adjustment	-0.3	-3.2	2.9	-	-1.8	-	4.7	2.9
<b>Total</b>	<b>130.9</b>	<b>74.7</b>	<b>56.2</b>	<b>16.3</b>	<b>0.5</b>	<b>7.5</b>	<b>31.9</b>	<b>56.2</b>

# Non-operating income/expenses and Extraordinary income/losses

We promote the well-being of the world  
through a spirit of exploration  
and diverse technologies.



(Unit : Billion yen)

	Results			Forecast			
	2025 Results	2024 Results	Difference (25-24)	2026 Forecast (May 13)	Difference (26-25)	1st Half Forecast (May 13)	2nd Half Forecast (May 13)
Interest income - net	-1.4	-1.9	0.5	-1.8	-0.4	-0.8	-0.9
Dividend income - net	0.5	0.6	-0.1	0.2	-0.3	0.2	0.0
Equity in gains/losses	7.4	4.6	2.8	3.3	-4.1	1.6	1.6
Forex Exchange gain or loss	-1.4	-2.4	1.0	0.0	1.4	0.0	0.0
Others	0.8	0.8	0.0	0.3	-0.5	0.0	0.3
<b>Non-operating income/expenses - net</b>	<b>5.8</b>	<b>1.7</b>	<b>4.2</b>	<b>2.0</b>	<b>-3.8</b>	<b>1.0</b>	<b>1.0</b>
Loss on sale & disposal of Fixed Asset	-2.8	-2.9	0.1	-0.9	1.9	-0.6	-0.4
Impairment losses	-0.5	-2.8	2.3	0.0	0.5	0.0	0.0
PL on sale of Investment Securities	0.3	9.4	-9.1	0.0	-0.3	0.0	0.0
PL on sale of shares of subsidiaries and associates	-16.9	2.2	-19.1	0.0	16.9	0.0	0.0
Provision and reversal of allowance for doubtful accounts	1.2	-0.5	1.7	0.0	-1.2	0.0	0.0
Subsidy Income	0.1	0.0	0.1	5.4	5.3	0.0	5.4
Others	-0.6	-1.0	0.4	-0.8	-0.2	-0.3	-0.5
<b>Extraordinary income/losses - net</b>	<b>-19.3</b>	<b>4.4</b>	<b>-23.6</b>	<b>3.7</b>	<b>22.9</b>	<b>-0.8</b>	<b>4.5</b>



# Trends of products

			2024					2025					2026 Forecast (May 13)			
			Q1	Q2	Q3	Q4	Year	Q1	Q2	Q3	Q4	Year	Year Forecast (Feb 13)	1st Half Forecast	2nd Half Forecast	Year Forecast
Copper foil	Volume of Sales	t / Month	1,680	1,650	1,680	1,600	1,650	1,750	1,980	1,970	1,700	1,850	1,890	1,840	1,790	1,810
VSP™	Volume of Sales	t / Month	240	390	420	430	370	510	560	550	570	550	540	720	840	780
MicroThin™ Total (a+b)	Volume of Sales	Index	100	107	89	83	95	126	140	138	146	137	137	160	149	155
MicroThin™ for HDI (a)	Volume of Sales		24	22	19	17	20	22	26	28	19	24	23	23	23	23
MicroThin™ for PKG (b)	Volume of Sales		76	85	70	66	75	104	114	110	127	113	114	137	126	132
Catalysts for motorcycle	Volume of Sales	Index	100	100	94	92	97	97	103	101	103	101	100	102	98	100
India	Volume of Sales	Index	100	101	87	83	93	87	98	97	101	96	94	100	93	97
Indonesia	Volume of Sales	Index	100	123	110	117	112	103	123	110	108	111	112	110	110	110
Others	Volume of Sales	Index	100	89	102	101	98	115	104	105	104	107	107	103	103	103
Catalysts for automobile	Volume of Sales	Index	100	98	100	95	98	94	95	96	95	95	94	94	95	94
MH alloy	Volume of Sales	Index	100	102	114	102	105	98	88	77	83	86	86	84	50	67
Protective Coating Materials for Semiconductor Production Equipment	Volume of Sales	Index	100	101	126	130	114	131	125	124	153	133	131	140	139	140
Zinc	Volume of Production	k-t	56	47	56	58	216	53	52	47	42	194	195	108	118	226
Side door Latches	Volume of Sales	Index	100	102	106	101	102	100	102	-	-	101	101			
Japan	Volume of Sales	Index	100	114	125	113	113	106	103	-	-	105	105			
China	Volume of Sales	Index	100	102	118	82	100	86	104	-	-	95	95			
Other Asia	Volume of Sales	Index	100	116	107	100	106	104	107	-	-	105	105			
America & Europe	Volume of Sales	Index	100	91	91	103	96	101	99	-	-	100	100			

※ Index : The sales volume in 2024 Q1 scaled at 100 ( except Copper Foil and Zinc )



# Inventory Factors and PGM price difference on Catalysts

(Unit : Billion yen)

## ■Inventory Factors

	2024							2025							2026 Forecast (May 13)				
	Q1	Q2	1st Half	Q3	Q4	2nd Half	Year	Q1	Q2	1st Half	Q3	Q4	2nd Half	Year	Year Fore cast (Feb 13)	Diff.	1st Half Forecast	2nd Half Forecast	Year Forecast
Engineered materials	0.8	1.7	2.5	0.3	0.3	0.6	3.1	0.2	0.1	0.3	0.2	1.4	1.6	1.9	0.7	1.2	1.5	-	1.5
Metals	7.3	0.4	7.7	4.1	0.8	4.9	12.6	-2.3	5.0	2.7	8.2	8.7	16.9	19.6	18.0	1.6	7.5	0.2	7.7
Corporate	0.7	0.3	1.0	-	-	-	1.0	-0.1	0.2	0.1	0.6	1.2	1.8	1.9	1.3	0.6	-0.3	-	-0.3
Consolidated	8.8	2.4	11.2	4.4	1.1	5.5	16.7	-2.2	5.3	3.1	9.0	11.3	20.3	23.4	20.0	3.4	8.7	0.2	8.9

## ■PGM price difference on Catalysts

Engineered materials	0.5	0.2	0.7	-	0.6	0.6	1.3	0.6	1.4	2.0	0.8	0.2	1.0	3.0	3.2	-0.2	1.0	-	1.0
----------------------	-----	-----	-----	---	-----	-----	-----	-----	-----	-----	-----	-----	-----	-----	-----	------	-----	---	-----

## ■Inventory Factors + PGM price difference on Catalysts

Engineered materials	1.3	1.9	3.2	0.3	0.9	1.2	4.4	0.8	1.5	2.3	1.0	1.6	2.6	4.9	3.9	1.0	2.5	-	2.5
Metals	7.3	0.4	7.7	4.1	0.8	4.9	12.6	-2.3	5.0	2.7	8.2	8.7	16.9	19.6	18.0	1.6	7.5	0.2	7.7
Corporate	0.7	0.3	1.0	-	-	-	1.0	-0.1	0.2	0.1	0.6	1.2	1.8	1.9	1.3	0.6	-0.3	-	-0.3
Consolidated	9.3	2.6	11.9	4.4	1.7	6.1	18.0	-1.6	6.7	5.1	9.8	11.5	21.3	26.4	23.2	3.2	9.7	0.2	9.9







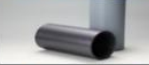



# Performance by Segment – Engineered Materials

(Unit : Billion yen)

	FY2025 Results	FY2024 Results	Difference (25-24)	FY2026 Forecast (May 13)	Diff. (26-25)	1st Half Forecast (May 13)	2nd Half Forecast (May 13)
■ Sales	328.4	246.2	82.3	379.0	50.6	190.0	189.0
■ Operating income	67.5	41.8	25.7	67.5	0.0	34.5	33.0
■ Ordinary income	66.5	40.3	26.2	67.0	0.5	34.5	32.5
※Ordinary income	61.6	35.9	25.7	64.5	2.9	32.0	32.5

※Ordinary income : Ordinary income excluding inventory factors and PGM price difference on Catalysts.

(Engineered Material Products)	(Main Applications)
Copper Foil 	<ul style="list-style-type: none"> <li>High-Density Packaging</li> <li>Printed circuit board</li> </ul>
Catalysts 	<ul style="list-style-type: none"> <li>Motorcycles</li> <li>Automobiles</li> </ul>
Battery Materials 	<ul style="list-style-type: none"> <li>Nickel-hydrogen batteries for hybrid cars</li> <li>Lithium-ion batteries</li> </ul>
Engineered Powders 	<ul style="list-style-type: none"> <li>Wide range of electronic components</li> </ul>
Rare Material 	<ul style="list-style-type: none"> <li>Abrasive for glass</li> <li>Wide range of electronic components</li> </ul>
Ceramics 	<ul style="list-style-type: none"> <li>Kiln furniture for electronic materials</li> <li>Liquid aluminum filtration equipment</li> </ul>
PVD Materials (Sputtering target) 	<ul style="list-style-type: none"> <li>Flat panel displays</li> </ul>
HRDP *1 	<ul style="list-style-type: none"> <li>Carrier for next-gen chips packages</li> </ul>

## Difference Analysis of Ordinary income

**[FY2024→FY2025 + 26.2]**

Copper foil +22.6 (MicroThin and VSP volume of sales increases, others)

Catalysts +6.1 (Volume of sales increases, PGM price difference improvement, others)

PVD Materials -0.9 (Inventory factors, others)

Headquarters -2.4 (Due to the reorganization, others)

**[FY2025→FY2026 Forecast + 0.5]**

Copper foil +5.0 (MicroThin and VSP volume of sales increases, others)

Catalysts -0.8 (PGM price difference decline, others)

Headquarters -3.5 (Business Promotion cost, others)

\*1 In October 2025, the HRDP was transferred from the Business Creation Sector to Engineered Materials Sector.



# Performance by Segment – Metals

(Unit : Billion yen)

	FY2025 Results	FY2024 Results	Difference (25-24)	FY2026 Forecast (May 13)	Diff. (26-25)	1st Half Forecast (May 13)	2nd Half Forecast (May 13)
■ Sales	376.7	325.0	51.7	434.0	57.3	213.0	221.0
■ Operating income	70.8	41.8	29.0	37.0	-33.8	22.0	15.0
■ Ordinary income	75.1	44.5	30.6	37.5	-37.6	22.5	15.0
※ Ordinary income	55.5	31.9	23.6	29.8	-25.7	15.0	14.8

※ Ordinary income : Ordinary income excluding inventory factors.

## Difference Analysis of Ordinary income

	FY2024→ FY2025	FY2025→ FY2026 Forecast
LME/Forex	0.7	2.7
T/C (Zinc)	-2.6	0.1
Inventory Factors	7.0	-11.9
Equity profit/loss	2.1	-2.5
Energy cost	3.5	-3.8
(Cokes, included in the number above)	(1.0)	(-0.6)
Others *	19.9	-22.2
<b>Total</b>	<b>30.6</b>	<b>-37.6</b>

Sensitivity to ordinary income (for FY2026)	Full open basis	Including forward contract
Zinc	± 100\$/t	1.5
Lead	± 100\$/t	0.2
US\$ (yen/\$)	± 1yen/\$	0.6

## Zinc TC

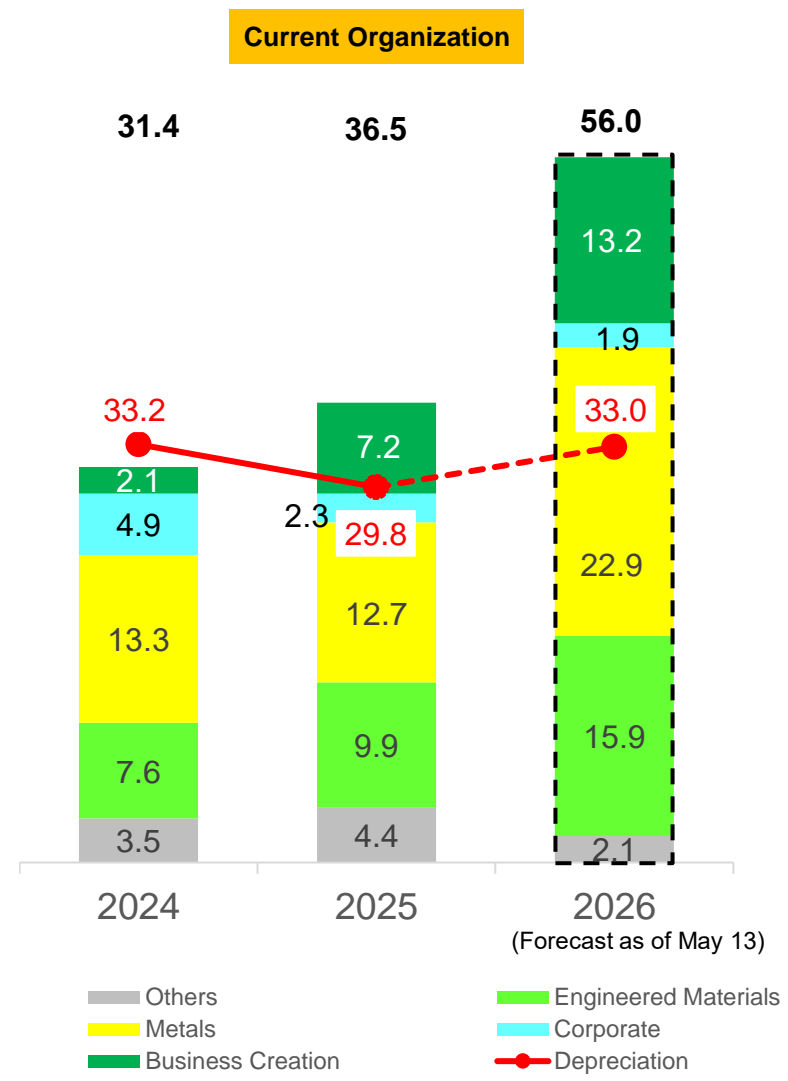
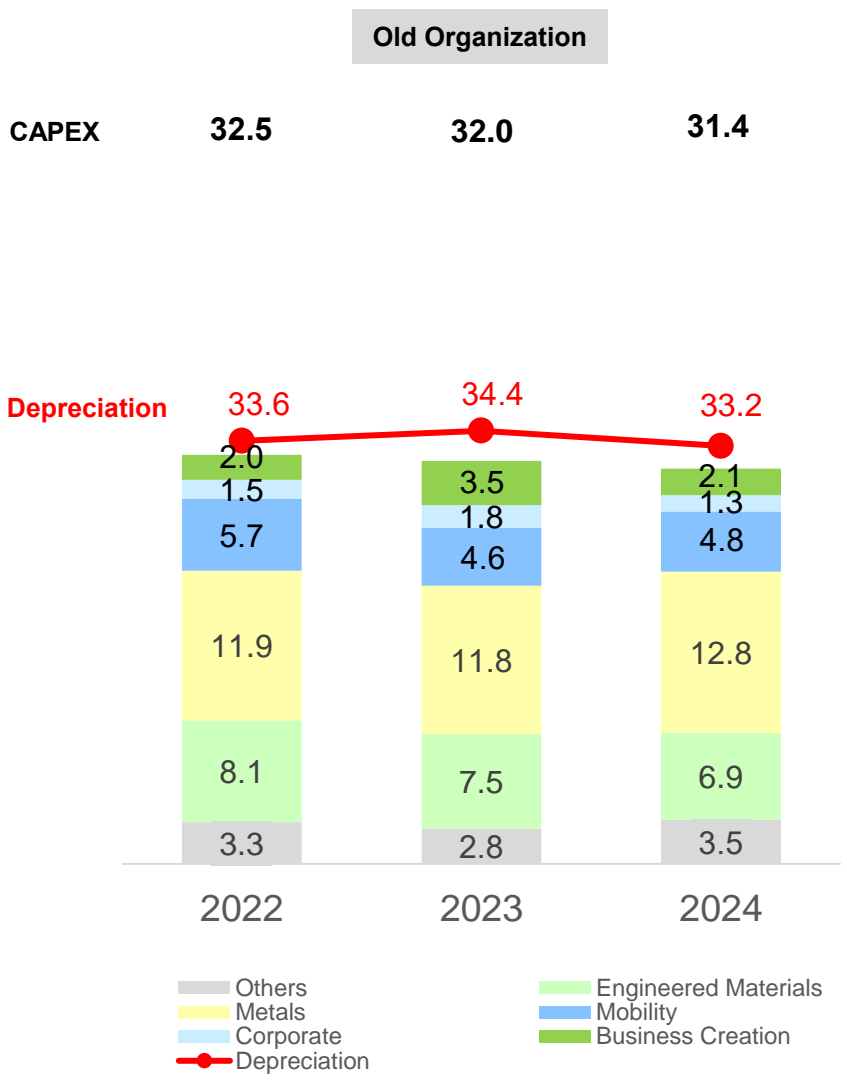
FY2024	165 \$/t
FY2025	80 \$/t
FY2026	85 \$/t

## \*Detail of Others

FY2024→ FY2025	Operating variance in zinc smelting operations -3.6, By-products of Zinc and Lead smelting +8.0, Lead raw material mix variance +5.2, Operating variance in copper smelting operations +7.4, Copper smelting tolling terms variance -2.3, Costs decrease in Copper Smelting (including large scale maintenance +2.4) +1.2, PGM recycling +2.9, Mineral Resource Div. +1.3
FY2025→ FY2026 Forecast	Operating variance in zinc smelting operations +4.0, By-products of Zinc and Lead smelting +2.0, Lead raw material mix variance -8.8, Zinc and Lead Smelting costs increase in Zinc and Lead Div. (including large scale maintenance -2.0) -6.3, Operating variance in copper smelting operations -6.8, Costs increase in Copper Smelting (including large scale maintenance -2.6) -2.9, PGM recycling -1.4, Mineral Resource Div. -0.4

# CAPEX and Depreciation

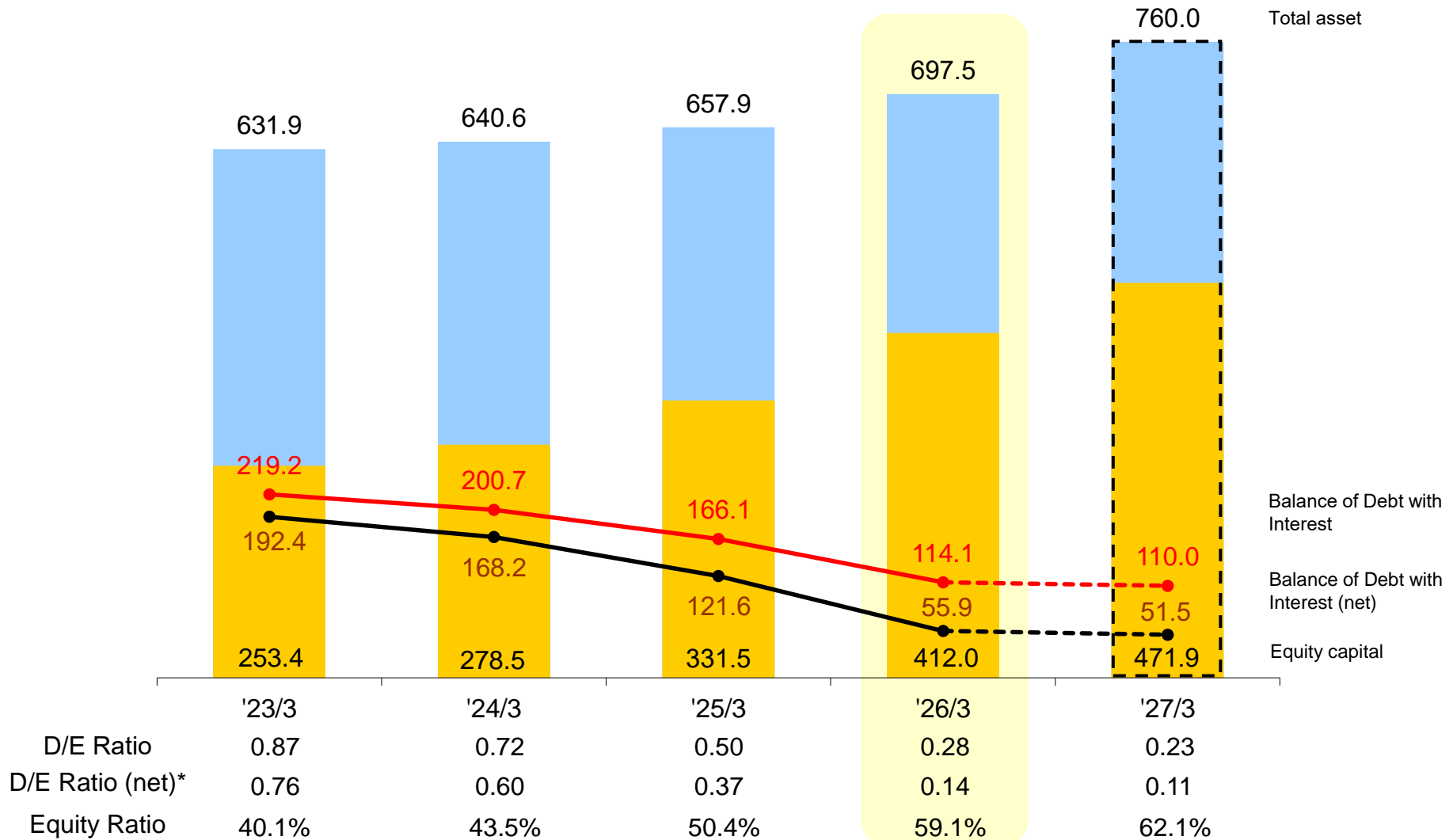
(Unit : Billion yen)





# Financial Position at Term End

(Unit : Billion yen)



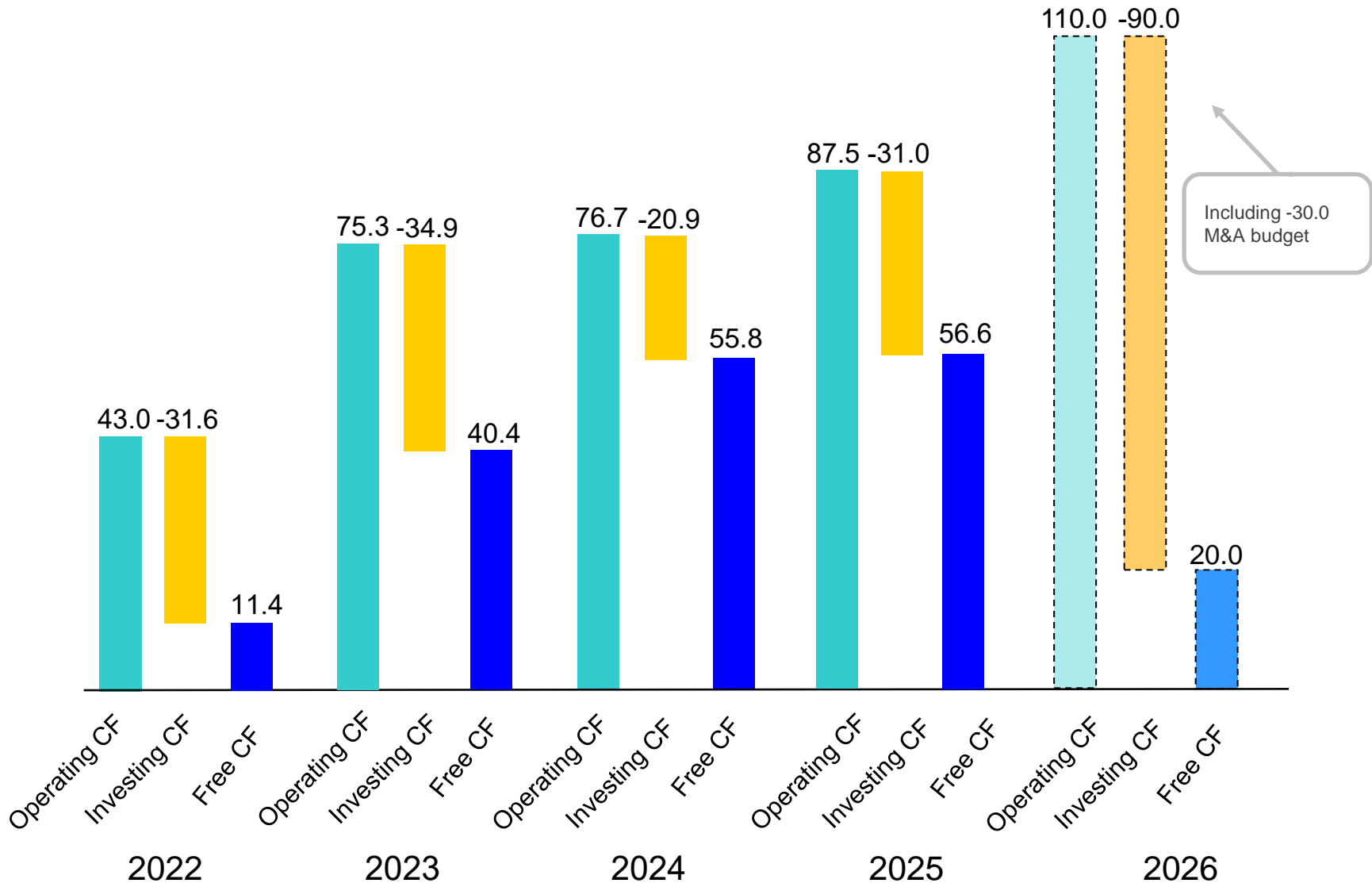
\* Net debt balance/Equity Capital

(Forecast as of May 13)



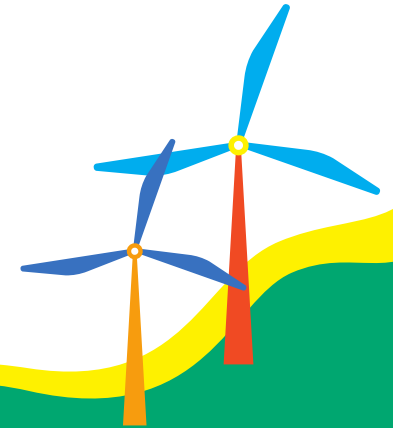
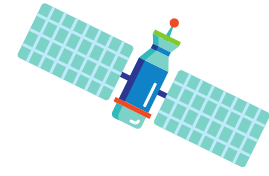
# Cash Flows

(Unit : Billion yen)



(Forecast as of May 13)

# Appendix





# Metal Prices and FOREX

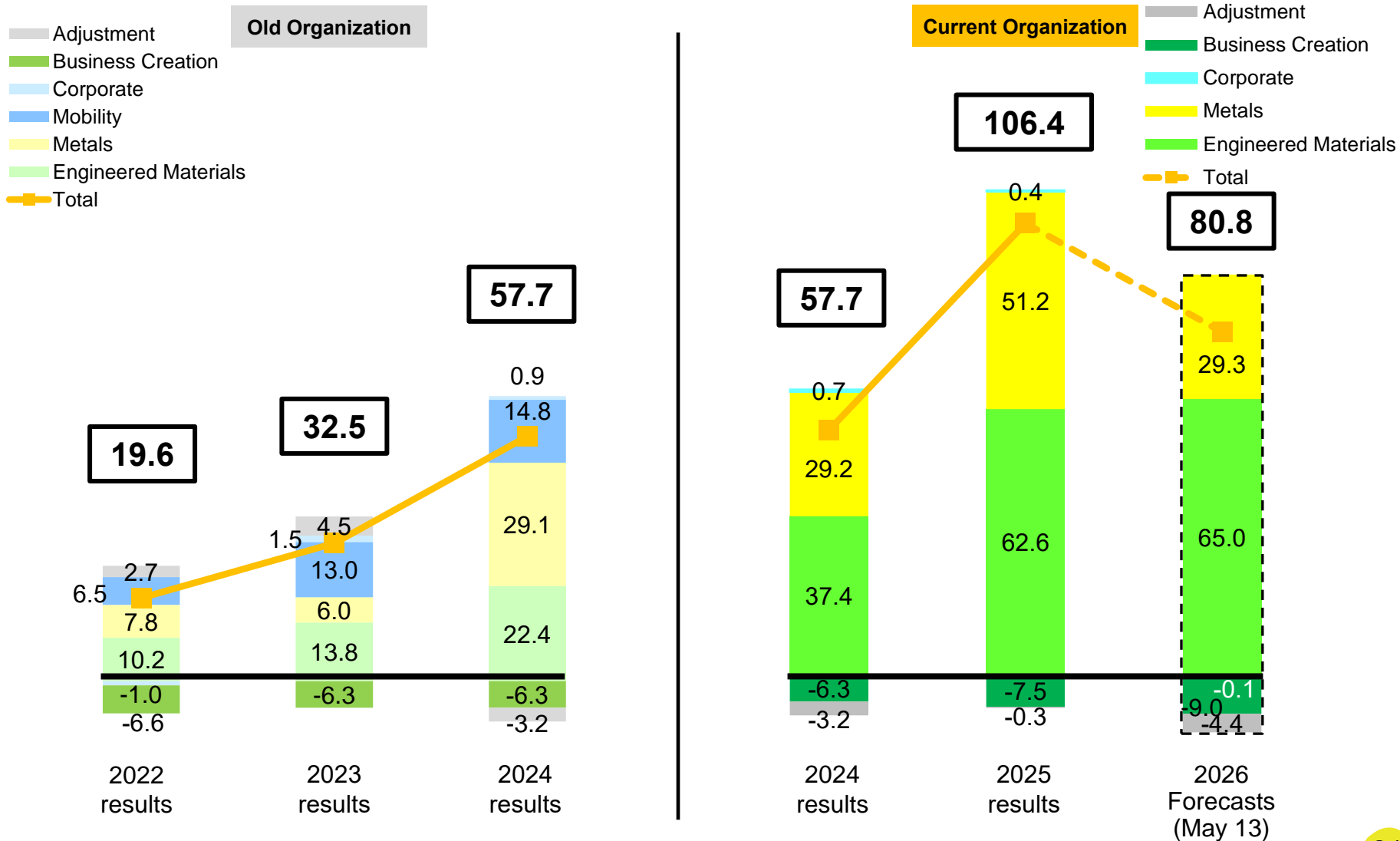
	2024							2025							2026 Forecast (May 13)		
	Q1	Q2	1st Half	Q3	Q4	2nd Half	Year	Q1	Q2	1st Half	Q3	Q4	2nd Half	Year	1st Half Fore cast	2nd Half Fore cast	Year Fore cast
Zinc (\$ / t)	2,833	2,779	2,806	3,048	2,838	2,943	2,874	2,641	2,824	2,733	3,165	3,243	3,204	2,968	3,200	3,200	3,200
Zinc (Actual) (\$ / t)	2,831	2,780	2,805	3,028	2,872	2,950	2,878	2,693	2,851	2,772	3,140	3,207	3,173	2,971	3,166	3,167	3,167
Lead (\$ / t)	2,166	2,041	2,104	2,006	1,970	1,988	2,046	1,947	1,965	1,956	1,971	1,931	1,951	1,953	1,900	1,900	1,900
Copper (¢ / lb)	442	417	430	416	424	420	425	432	444	438	504	583	543	491	590	590	590
Indium (\$ / Kg)	324	370	347	341	353	347	347	376	355	366	367	593	480	423	700	700	700
Palladium (\$ / oz)	972	970	971	1,011	961	986	979	990	1,171	1,081	1,469	1,715	1,592	1,336	1,600	1,600	1,600
Rhodium (\$ / oz)	4,706	4,693	4,700	4,651	4,931	4,791	4,745	5,453	6,770	6,112	7,912	10,790	9,351	7,731	10,000	10,000	10,000
Yen/US\$ (yen / \$)	155.9	149.4	152.6	152.4	152.6	152.5	152.6	144.6	147.5	146.0	154.2	156.9	155.5	150.8	155.0	155.0	155.0
Yen/US\$ (Actual) (yen / \$)	152.9	147.5	150.2	150.2	150.8	150.5	150.4	144.9	147.3	146.1	152.6	154.8	153.7	149.7	153.9	153.9	153.9

# Financial Performance (Operating income)

## Trends in Financial Performance

(excludes inventory factor and PGM price difference on Catalysts from Operating income)

(Unit : Billion yen)

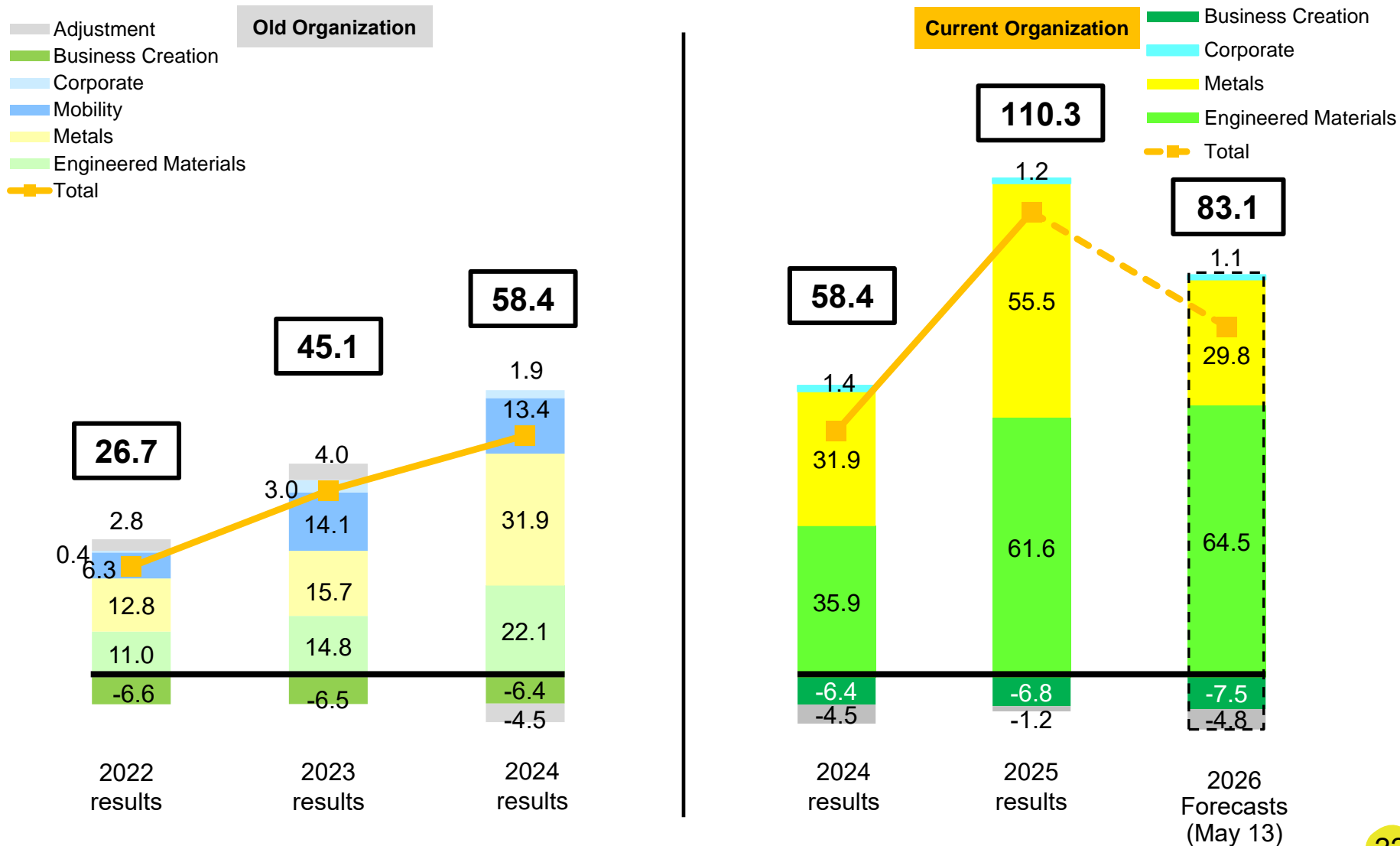


# Financial Performance (Ordinary income)

## Trends in Financial Performance

(excludes inventory factor and PGM price difference on Catalysts from Ordinary income)

(Unit : Billion yen)



# Sales and Incomes

We promote the well-being of the world  
through a spirit of exploration  
and diverse technologies.



(Unit : Billion yen)

	'24/Q1	'24/Q2	'24/Q3	'24/Q4	FY2024	'25/Q1	'25/Q2	'25/Q3	'25/Q4	FY2025	'26/1H Forecast (May 13)	'26/2H Forecast (May 13)	FY2026 Forecast (May 13)
<b>■ Sales</b>													
Engineered Materials	61.0	63.0	61.8	60.4	246.2	71.3	79.2	83.1	94.8	328.4	190.0	189.0	379.0
Metals	73.2	82.1	79.7	90.1	325.0	74.0	87.2	93.8	121.7	376.7	213.0	221.0	434.0
Corporate	55.3	57.6	57.9	61.0	231.8	53.7	58.3	33.9	41.8	187.7	66.0	66.0	132.0
Adjustment	-19.6	-24.4	-21.6	-24.9	-90.6	-30.0	-29.5	-32.9	-41.9	-134.3	-59.0	-56.0	-115.0
Consolidated	169.9	178.3	177.8	186.5	712.3	169.0	195.3	177.9	216.3	758.5	410.0	420.0	830.0
<b>■ Operating income</b>													
Engineered Materials	11.0	11.1	9.7	9.9	41.8	12.9	15.2	17.4	22.0	67.5	34.5	33.0	67.5
Metals	17.9	4.8	9.1	10.0	41.8	2.9	14.8	18.1	34.9	70.8	22.0	15.0	37.0
Corporate	-0.7	0.6	0.4	0.5	0.7	-1.1	-0.4	0.6	1.3	0.4	-0.5	0.4	-0.1
Business Creation	-1.5	-1.6	-1.7	-1.5	-6.3	-1.1	-2.6	-1.4	-2.4	-7.5	-4.0	-4.9	-9.0
Adjustment	-3.2	0.5	-0.1	-0.5	-3.2	-2.2	1.3	-2.8	3.4	-0.3	-3.0	-1.5	-4.4
Consolidated	23.5	15.3	17.4	18.5	74.7	11.4	28.3	32.0	59.2	130.9	49.0	42.0	91.0
<b>■ Ordinary income</b>													
Engineered Materials	11.7	8.0	11.8	8.9	40.3	10.5	16.0	18.4	21.7	66.5	34.5	32.5	67.0
Metals	19.5	4.8	10.3	10.0	44.5	3.3	15.1	20.2	36.5	75.1	22.5	15.0	37.5
Corporate	-0.1	0.6	0.9	0.9	2.4	-0.5	-0.2	1.2	2.7	3.1	-0.2	1.0	0.8
Business Creation	-1.5	-1.7	-1.7	-1.4	-6.4	-1.1	-2.7	-1.4	-1.7	-6.8	-4.0	-3.5	-7.5
Adjustment	-3.4	0.4	-0.5	-1.0	-4.5	-2.2	1.0	-3.0	3.0	-1.2	-2.8	-2.0	-4.8
Consolidated	26.2	12.2	20.7	17.3	76.4	10.0	29.1	35.4	62.2	136.7	50.0	43.0	93.0
<b>■ Net income attributable to owners of parent</b>													
	22.1	14.9	15.1	12.5	64.7	-6.0	25.0	30.0	42.2	91.3	37.0	38.0	75.0

# Operating incomes and ordinary incomes excluding inventory factors and PGM price difference on Catalysts

We promote the well-being of the world  
through a spirit of exploration  
and diverse technologies.



(Unit : Billion yen)

	'24/Q1	'24/Q2	'24/Q3	'24/Q4	FY2024	'25/Q1	'25/Q2	'25/Q3	'25/Q4	FY2025	'26/1H Forecast (May 13)	'26/2H Forecast (May 13)	FY2026 Forecast (May 13)
<b>■ Operating income</b>													
Engineered Materials	9.7	9.2	9.4	9.0	37.4	12.1	13.7	16.4	20.4	62.6	32.0	33.0	65.0
Metals	10.6	4.4	5.0	9.2	29.2	5.2	9.8	9.9	26.2	51.2	14.5	14.8	29.3
Corporate	-0.7	0.6	0.4	0.5	0.7	-1.1	-0.4	0.6	1.3	0.4	-0.5	0.4	-0.1
Business Creation	-1.5	-1.6	-1.7	-1.5	-6.3	-1.1	-2.6	-1.4	-2.4	-7.5	-4.0	-4.9	-9.0
Adjustment	-3.2	0.5	-0.1	-0.5	-3.2	-2.2	1.3	-2.8	3.4	-0.3	-3.0	-1.5	-4.4
Consolidated	14.9	13.0	13.0	16.8	57.7	12.9	21.8	22.8	48.9	106.4	39.0	41.8	80.8
<b>■ Ordinary income</b>													
Engineered Materials	10.4	6.1	11.5	8.0	35.9	9.7	14.5	17.4	20.1	61.6	32.0	32.5	64.5
Metals	12.2	4.4	6.2	9.2	31.9	5.6	10.1	12.0	27.8	55.5	15.0	14.8	29.8
Corporate	-0.8	0.3	0.9	0.9	1.4	-0.4	-0.4	0.6	1.5	1.2	0.1	1.0	1.1
Business Creation	-1.5	-1.7	-1.7	-1.4	-6.4	-1.1	-2.7	-1.4	-1.7	-6.8	-4.0	-3.5	-7.5
Adjustment	-3.4	0.4	-0.5	-1.0	-4.5	-2.2	1.0	-3.0	3.0	-1.2	-2.8	-2.0	-4.8
Consolidated	16.9	9.6	16.3	15.6	58.4	11.6	22.4	25.6	50.7	110.3	40.3	42.8	83.1

# Sales

We promote the well-being of the world  
through a spirit of exploration  
and diverse technologies.



(Unit : Billion yen)

		2024					2025				
		Q1	Q2	Q3	Q4	FY2024	Q1	Q2	Q3	Q4	FY2025
Engineered Materials	Copper Foil	23.3	25.1	22.2	22.5	93.2	29.9	34.1	34.6	36.4	135.0
	Catalysts	23.0	23.0	23.5	23.2	92.7	26.2	28.7	31.5	34.3	120.6
	Engineered Powders	8.4	8.9	9.3	8.2	34.9	7.1	8.5	9.8	15.5	40.9
	Others	6.2	6.0	6.7	6.4	25.4	8.1	7.9	7.3	8.7	32.0
		61.0	63.0	61.8	60.4	246.2	71.3	79.2	83.1	94.8	328.4
Metals	Lead & Zinc	51.4	58.2	54.9	65.7	230.2	48.0	60.1	59.2	79.7	247.1
	Copper & Precious Metals	17.8	17.6	19.9	20.2	75.5	21.0	22.7	26.3	35.4	105.4
	Others	3.9	6.2	4.9	4.2	19.2	5.0	4.3	8.2	6.6	24.2
		73.2	82.1	79.7	90.1	325.0	74.0	87.2	93.8	121.7	376.7
Corporate	Door Latches for automobiles	23.2	24.2	24.7	23.8	95.8	24.6	26.7	0.0	0.0	51.2
	Business Reconstruction Office products	26.9	26.5	26.0	27.5	107.0	23.3	24.7	23.3	29.5	100.8
	Engineering business, Others	5.1	6.9	7.2	9.7	28.9	5.9	7.0	10.6	12.3	35.7
		55.3	57.6	57.9	61.0	231.8	53.7	58.3	33.9	41.8	187.7
Adjustment		-19.6	-24.4	-21.6	-24.9	-90.6	-30.0	-29.5	-32.9	-41.9	-134.3
Consolidated		169.9	178.3	177.8	186.5	712.3	169.0	195.3	177.9	216.3	758.5

# List of transient factors and Non-operating income/expenses Forex Exchange gain or loss

We promote the well-being of the world  
through a spirit of exploration  
and diverse technologies.



(Unit : Billion yen)

## FY2026 Forecast Transient factors

		FY2026 1st half Forecast	FY2026 2nd half Forecast	FY2026 Forecast (May 13)
Metals	Large scale maintenance for Zinc Smelting	-2.0	0.0	-2.0
	Large scale maintenance for Copper Smelting	0.0	-2.6	-2.6
Subtotal		-2.0	-2.6	-4.6
Total		-2.0	-2.6	-4.6

## (Reference) FY2025 and FY2024 Transient factors

		Q1	Q2	FY2025 1st half	Q3	Q4	FY2025 2nd half	FY2025	FY2025 1st half Forecast(Feb 13)	FY2025 2nd half Forecast(Feb 13)	FY2025 Forecast(Feb 13)
Metals	Lead raw material mix variance	0.0	3.9	3.9	0.0	0.0	0.0	3.9	3.9	0.0	3.9
	Subtotal	0.0	3.9	3.9	0.0	0.0	0.0	3.9	3.9	0.0	3.9
Corporate	Loss on sale of shares of ACT Corporation	-19.7	0.9	-18.8	-0.2	0.0	-0.2	-19.0	-18.8	-0.2	-19.0
	Subtotal	-19.7	0.9	-18.8	-0.2	0.0	-0.2	-19.0	-18.8	-0.2	-19.0
Adjustment	Actuarial gains in retirement benefit obligations of the head office	0.0	0.0	0.0	0.0	4.7	4.7	4.7	0.0	4.5	4.5
Total		-19.7	4.8	-14.9	-0.2	4.7	4.5	-10.4	-14.9	4.3	-10.6

		Q1	Q2	FY2024 1st half	Q3	Q4	FY2024 2nd half	FY2024
Metals	Large scale maintenance for copper smelting	0.0	0.0	0.0	-2.4	0.0	-2.4	-2.4
Subtotal		0.0	0.0	0.0	-2.4	0.0	-2.4	-2.4
Total		0.0	0.0	0.0	-2.4	0.0	-2.4	-2.4

## (Reference) FY2025 and FY2024 Non-operating income/expenses Forex Exchange gain or loss

		Q1	Q2	FY2025 1st half	Q3	Q4	FY2025 2nd half	FY2025	FY2025 1st half Forecast(Feb 13)	FY2025 2nd half Forecast(Feb 13)	FY2025 Forecast(Feb 13)
Engineered	Copper Foil	-1.7	0.6	-1.1	0.3	0.1	0.4	-0.7	-1.1	0.3	-0.8
Materials	Catalysts	-0.6	-0.1	-0.7	0.4	-0.6	-0.2	-0.9	-0.7	0.4	-0.3
	Others	0.0	0.0	0.0	-0.1	0.3	0.2	0.2	0.0	-0.2	-0.2
Consolidated		-2.3	0.5	-1.8	0.6	-0.2	0.4	-1.4	-1.8	0.5	-1.3

		Q1	Q2	FY2024 1st half	Q3	Q4	FY2024 2nd half	FY2024
Engineered	Copper Foil	0.4	-2.0	-1.6	1.3	-0.2	1.1	-0.5
Materials	Catalysts	0.3	-1.0	-0.7	0.5	-0.7	-0.2	-0.9
	Others	0.5	-1.3	-0.8	0.6	-0.8	-0.2	-1.0
Consolidated		1.2	-4.3	-3.1	2.4	-1.7	0.7	-2.4



# Performance by Segment – MITSUI KINZOKU ACT


(Corporate)

(Unit : Billion yen)

	25/1H Results	24/1H Results	Diff. (25-24)
■Sales	51.2	47.4	3.8
■Operating income	-0.8	0.0	-0.9
■Ordinary income	-0.8	-0.5	-0.4

	FY2025 Results	FY2024 Results	Diff. (25-24)
■Sales	51.2	95.8	-44.6
■Operating income	-0.8	1.0	-1.8
■Ordinary income	-0.8	0.7	-1.6

The transfer of all shares of MITSUI KINZOKU ACT was completed on Nov 4, 2025.

Main Applications		
Automotive parts		•Door locks for automobiles

## Difference Analysis of Ordinary income

[ FY2024 1<sup>st</sup> Half→FY2025 1<sup>st</sup> Half - 0.4 ]  
ACT                    -0.4 (Cost up, others)

## ACT : Difference Analysis of Ordinary income

	FY2024 1H→ FY2025 1H
Sales volume	0.2
Cost down	-0.3
Others *	-0.3
Total	-0.4

\* Detail of Others

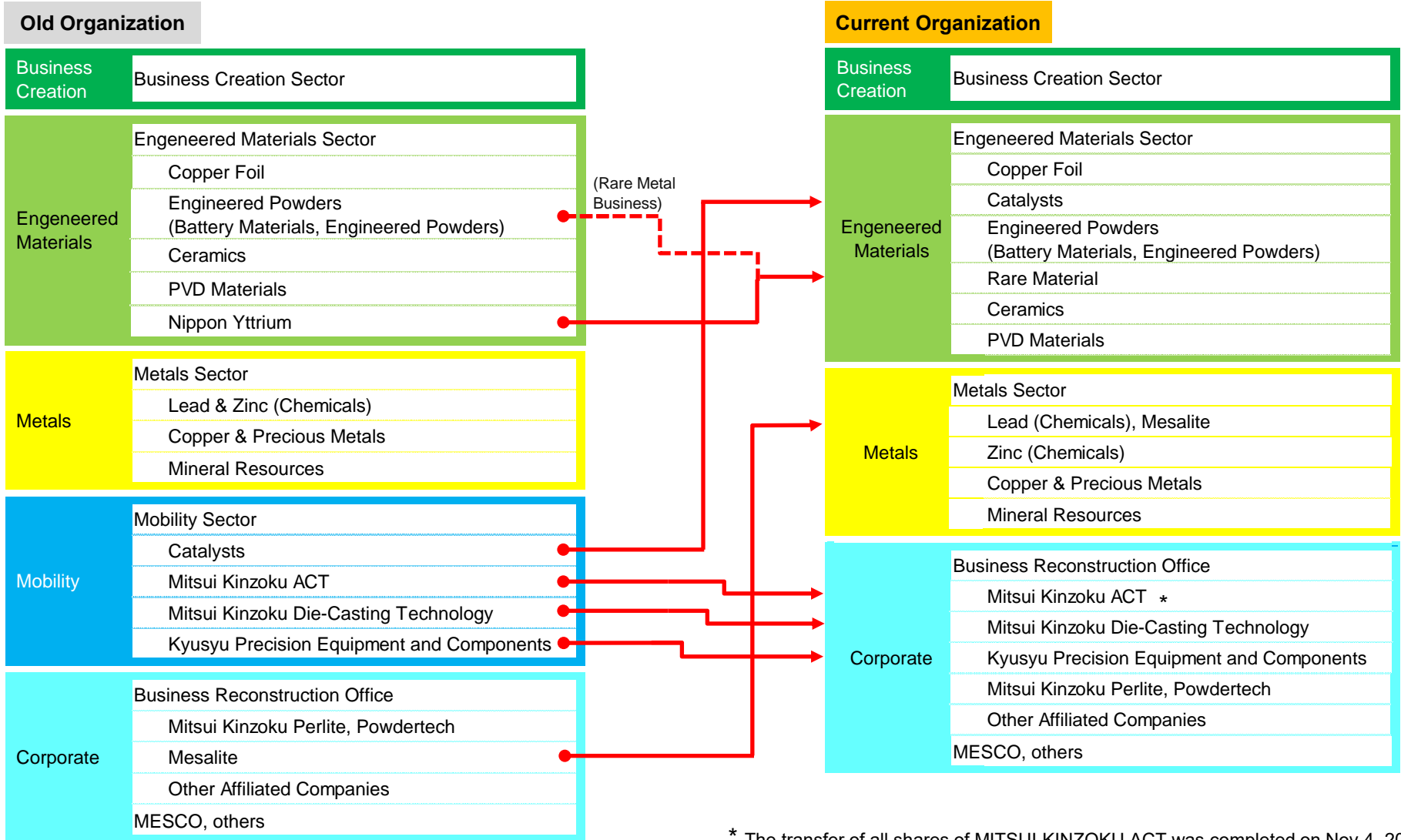
Price difference in materials  
such as steel  
Forex exchange  
Freight Charge  
Miscellaneous income  
Additional cost

FY2024 1H→  
FY2025 1H

+0.3  
+0.4  
-0.2  
-0.3  
-0.5



# Changes of Company Organization (After April 1st, 2025)



\* The transfer of all shares of MITSUI KINZOKU ACT was completed on Nov 4, 2025.



## Caution Concerning Forward-looking Statements

Statements contained in these materials regarding forecasts of future events are qualified by various risks, both existing and unknown, and uncertainties, which may have a material impact on the actual business conditions and operational activities. Consequently, please be aware that actual performance may differ substantially from forecasts and business plans indicated herein because of various unforeseeable factors.

mitsui kinzoku company, limited cannot guarantee the validity of the targets, assumptions, expectations, predictions, plans, assessments and other information contained in this material, and the Company also cannot guarantee that its actual business performance will be consistent with the forecasts presented within.

Regarding latent risks which might impact forecast results and other uncertainties, some items are included in the “Business and Other Risks” section of our financial statements or our website. However, please recognize that these are just a summary rather than a comprehensive list of all possible items relating to latent risks and uncertainties.

This material was compiled with the aim of furthering the understanding of our shareholders and other investors with regard to the Company’s management policy and other details. This material is not for the purpose of soliciting investment through the purchase or sale of stocks. Accordingly, you are advised not to make your investment decision solely on the basis of the material presented herein.