

Financial Data Book

投資家の方のための
財務データ集

for Investors

2010年7月発行 (July 2010)

2010

三井金属鉱業株式会社
MITSUI MINING & SMELTING CO., LTD.

CODE : 5706

注 Notes

1. 本冊子記載の財務数値は日本の会計基準に基づいて作成された各決算期の監査済み有価証券報告書および英文アニュアルレポート等に基づいております。
なお、本冊子自体は監査法人等の監査を受けておりません。

Not audited but based on audited financial statements prepared in accordance with accounting principles that were generally accepted in Japan when original statements were prepared.

2. 該当する数値が原資料に記載されていない場合は N/A と表示しております。
N/A means that an appropriate figure was not available in original statements.
3. 単位未満の金額は原則として切り捨てで表示してあります。
Amounts less than a unit are principally rounded down.

世界有数の非鉄金属メーカーとして技術力を蓄積してきた三井金属は、いまや亜鉛のトップメーカーであるにとどまらず、その「マテリアルの知恵」を電子材料・自動車用機能部品・資源リサイクル等の様々な分野で開花させています。

特に電子材料分野の成長は著しく、プリント配線板用電解銅箔やIC実装用テープをはじめとする当社製品がパソコンや薄型テレビ・携帯電話など最新電子機器の性能向上に大きな役割を果たしています。

Mitsui Kinzoku is now one of the key suppliers of nonferrous metal derivatives which play a key role in high-tech industries. Its *electronics-related materials*, including copper foil (for printed wiring boards) and semiconductor packaging tapes, are indispensable for PCs, flat-panel TVs, mobile phones, and other cutting-edge electronics devices.

Since its establishment in 1950, Mitsui Kinzoku has been a leading supplier of such *nonferrous metals* as zinc and copper, and has been one of the world's largest zinc producers. To take full advantage of its expertise in material processing, Mitsui Kinzoku has diversified its profit sources to include *automotive parts production* and *recycling & environmental businesses*.

目次 Contents

	page	
事業内容	2	Business Areas
最近10年間の動き(連結)	4	Ten-year Review (Consolidated)
要約財務情報(連結)	6	Financial Summary (Consolidated)
連結貸借対照表	8	Consolidated Balance Sheets
連結損益計算書	10	Consolidated Statements of Income
連結キャッシュフロー計算書	12	Consolidated Statements of Cash Flows
事業別セグメント情報	14	Business Segment Information
設立以来の業績推移	16	Performance since Establishment
経営体制	17	Directors, Auditors and Executive Officers
主要事業所・関係会社	18	Major Plants and Offices
会社と株式の情報	20	Corporate Data and Shareholders

事業内容 Business Areas

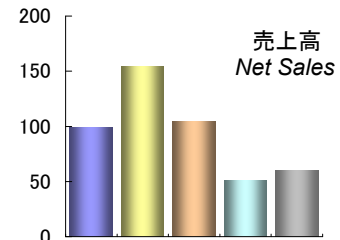
事業区分 <i>Business segment</i>	主要製品・サービス (用途例)
鉱山・基礎素材 <i>Mining and Fundamental Materials</i>	  亜鉛・亜鉛合金 (メッキ鋼板、ダイカスト) 銅 (電線、伸銅品) 金・銀 (電子工業材料、感光材料) 地熱蒸気 (発電)
中間素材 <i>Intermediate Materials</i>	   電子材料 電解銅箔 (電子機器用プリント配線板) 半導体実装材料 (液晶駆動用IC等の連続実装) (TAB・COFテープ) 電池材料 (乾電池、ハイブリット車向け電池) 薄膜材料 (液晶画面、磁気記憶装置) 金属機能粉 (電子部品、複写機トナー) レアメタル化合物 (電子部品、ガラス研磨、レンズ) セラミックス製品 (炉材、熔融金属濾過) パーライト (建築材料、湿式濾過) 伸銅品・亜鉛板 (電気部品、電極材、屋根材) 研削砥石 (機械研削) 希土類 単結晶 (検出器、レンズ)
組立加工 <i>Parts Manufacturing and Assembly</i>	 自動車用機能部品 (ドアロック、ドア電動開閉装置) ダイカスト製品 (自動車、産業機器、家電製品) 触媒 (排ガス浄化装置) 計測機器
環境・リサイクル <i>Environmental Engineering and Metals Recycling</i>	 鉛 (蓄電池、無機薬品) 酸化亜鉛・酸化鉛 (ガラス・ゴム等の添加物) パーライト (乾式濾過、土壌改良) 産業廃棄物処理 人工軽量骨材 (軽量コンクリート)
エンジニアリング サービス等 <i>Engineering / Services</i>	エンジニアリング (各種設備の設計・施工) 非鉄金属・電子材料等の販売 情報処理システム

Major products and services

(Applications)

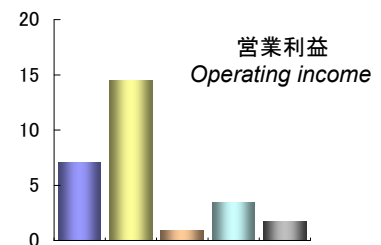
Zinc metal & alloy	(galvanized steel, die-casting)
Copper metal	(electric wire, rolled copper and brass)
Gold & silver	(electronics, photosensitives)
Geothermal steam	(power generation)

2010年3月期実績
Results for fiscal year ended March 2010
(十億円 billion yen)

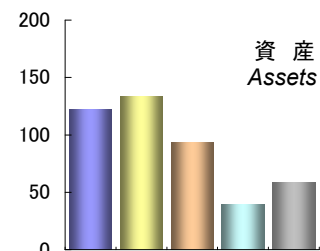


Electronics materials

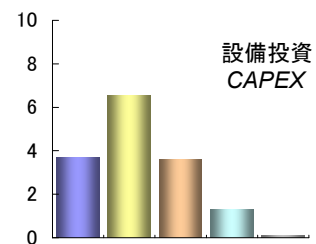
Electrodeposited copper foil	(printed wiring boards)
TAB & COF tapes	(tape automated bonding of LCD driver ICs)
Battery materials	(dry batteries, hybrid powered vehicles)
Sputtering targets	(flat panel displays, magnetic data storage)
Engineered metal powders	(electronics, toner for copiers)
Rare metal compounds	(electronics, glass polishing, optical lenses)



Specialty ceramics	(furnace refractory, melted metal filtration)
Perlite	(construction, liquid filtration)
Rolled copper & zinc	(electric parts, electrodes, roofs of buildings)
Grinding wheels	(mechanical grinding)
Rare earths	
Single crystals	(scintillators, optical lenses)



Automotive components	(door latches, power slide door systems)
Die-casting products	(automobiles, machines, home electronics)
Catalysts	(exhaust gas detoxifiers)
Instrumentation systems	



Lead metal	(car batteries, inorganic chemicals)
Zinc & lead oxide	(glass, rubber)
Perlite	(air filtration, soil improvement)
Industrial waste treatment	
Artificial light-weight aggregate	(light-weight concrete)

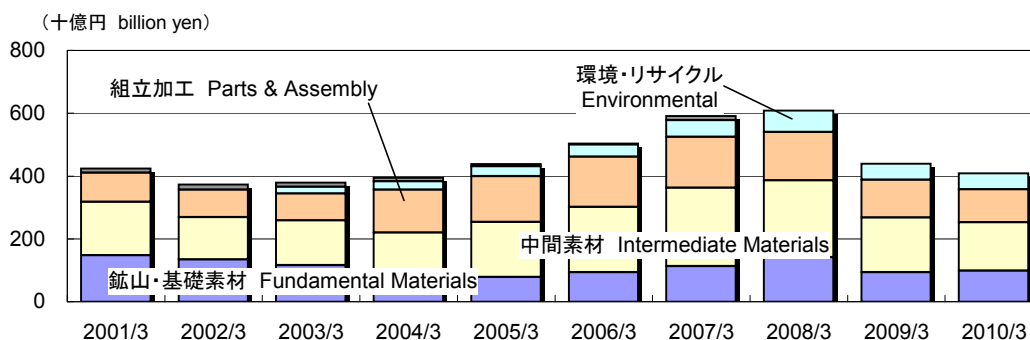
鉱山・基礎素材
Fundamental Materials
 中間素材
Intermediate Materials
 組立加工
Parts & Assembly
 環境・リサイクル
Environmental
 エンジニアリング・サービス
Engineering & Services

Engineering

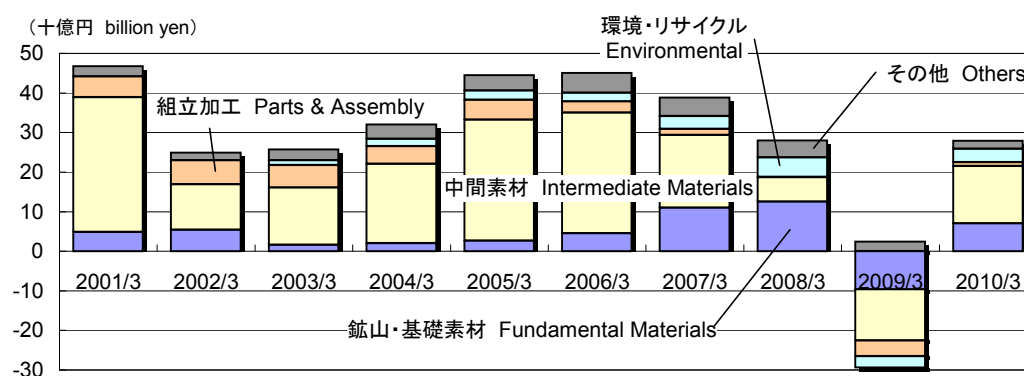
Trading
Information system

最近10年間の動き（連結） Ten-year Review (Consolidated)

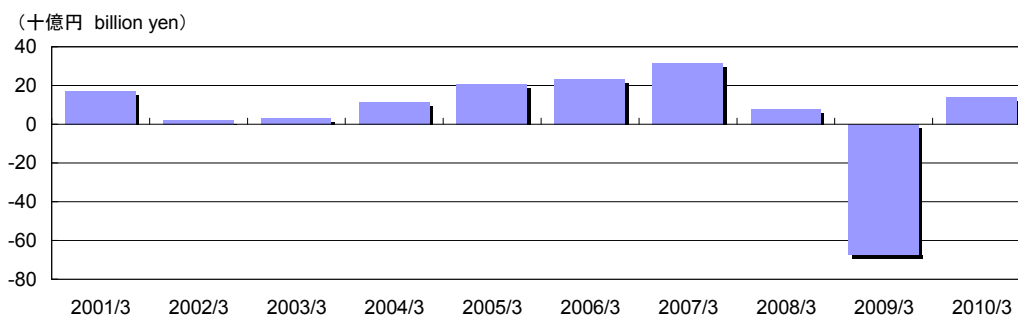
■売上高 Net sales



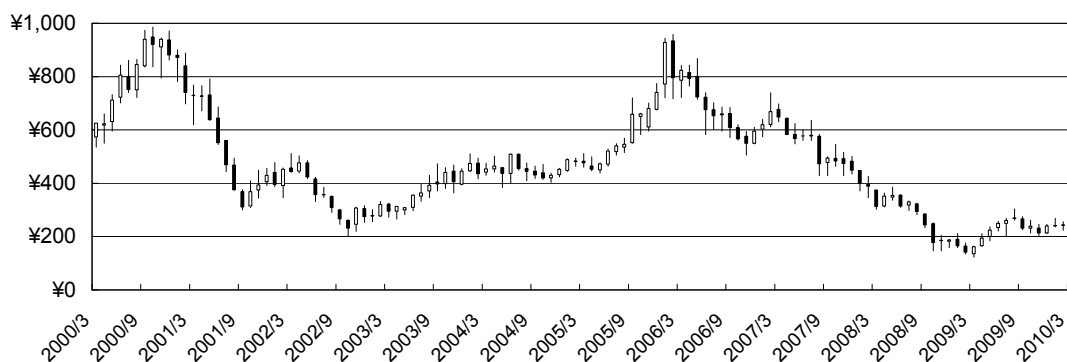
■営業利益 Operating income



■当期純利益 Net income

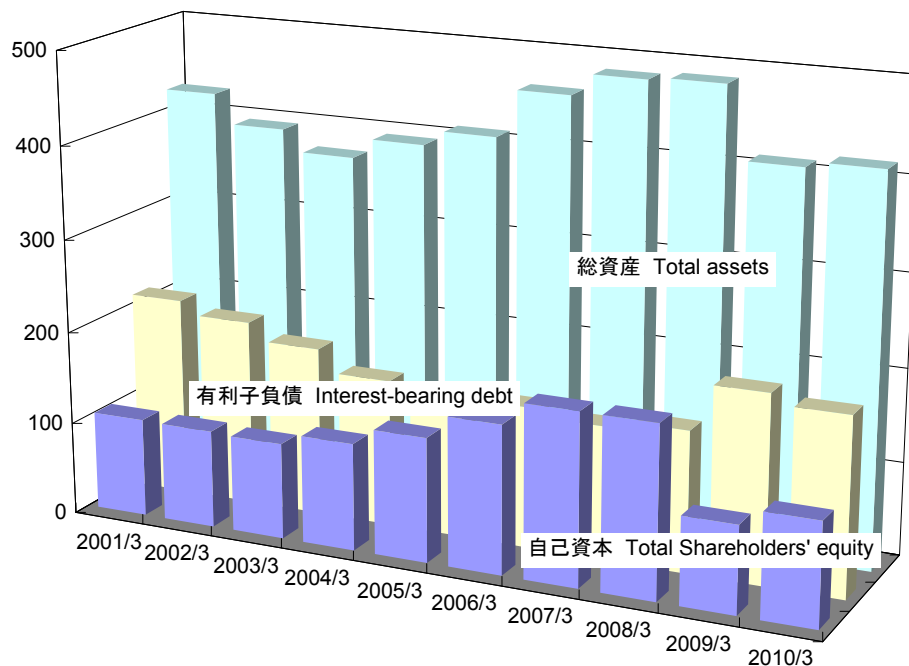


■株価 Stock price per share



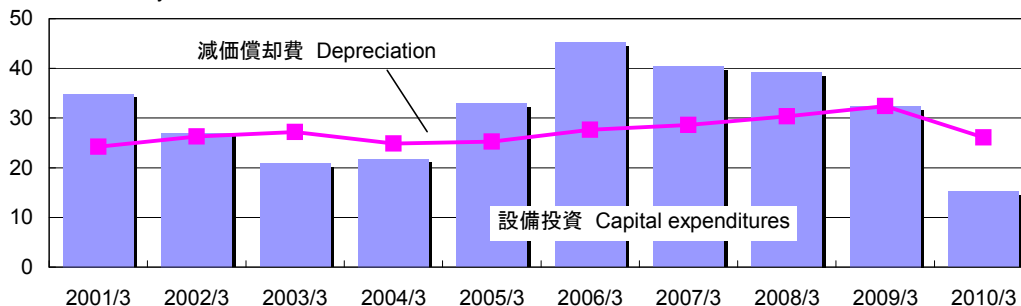
■ 財政状態 *Financial position*

(十億円 billion yen)



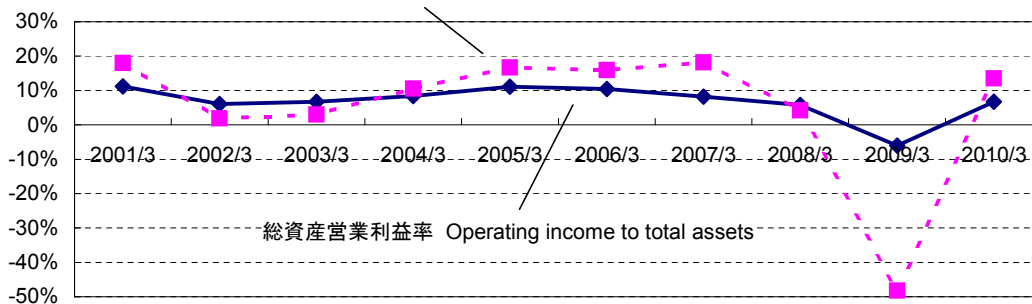
■ 設備投資・減価償却 *Capital expenditures and depreciation*

(十億円 billion yen)



■ 資本効率 *ROA and ROE*

自己資本当期純利益率 Net income to total shareholders' equity



要約財務情報（連結） Financial Summary (Consolidated)

(百万円 Millions of yen)

決算期 for fiscal years ended

2010/3 2009/3 2008/3 2007/3

売上高・損益		Sales and profit/loss			
売上高	Net sales	392,364	427,191	595,463	591,518
営業利益	Operating income	27,881	(27,031)	27,993	38,865
経常利益	Recurring income	25,639	(30,310)	41,780	56,585
当期純利益	Net income	13,899	(67,256)	7,830	31,370
EBITDA	Earnings before interest, taxes, depreciation and amortization	50,388	(19,801)	53,069	77,446
財政状況(期末)		Financial position at fiscal year-end			
総資産	Total assets	416,541	410,258	486,238	483,397
自己資本	Total shareholders' equity	111,341	94,145	184,995	185,513
有利子負債残高	Interest-bearing debt	191,515	202,468	151,924	143,220
D/E レシオ	D/E ratio	1.72	2.15	0.82	0.77
自己資本比率	Shareholders' equity ratio	26.7%	22.9%	38.0%	38.4%
発行済株式総数(千株)	Shares issued (thousand shares)	572,966	572,966	572,966	572,966
自己株式を除く発行済株式数	Outstanding shares excluding treasury stock	571,507	571,523	572,683	572,713
1株当たり情報		Per share data			
1株当たり純資産	Total shareholders' equity	¥194.8	¥164.7	¥323.0	¥323.9
1株当たり当期純利益	Net income	¥24.3	(¥117.6)	¥13.6	¥54.7
潜在株式調整後 1株当たり当期純利益	Net income [diluted]	¥24.3	(¥117.6)	¥13.6	¥54.7
1株当たり配当額	Cash dividends applicable to the year	¥3.0	-	¥12.0	¥12.0
収益性比率		Profitability ratios			
売上高営業利益率	Operating income to net sales	7.1%	(6.3%)	4.7%	6.6%
総資産営業利益率	Operating income to *total assets	6.7%	(6.0%)	5.8%	8.2%
総資産当期純利益率	Net income to *total assets	3.4%	(15.0%)	1.6%	6.6%
株主資本当期純利益率	Net income to *total shareholders' equity	13.5%	(48.2%)	4.2%	18.2%
* Average of beginning and end of fiscal year					
キャッシュフロー		Cash flows			
営業活動によるキャッシュフロー	Net cash from operating activities	19,610	30,038	41,657	34,077
投資活動によるキャッシュフロー	Net cash from investing activities	(17,823)	(36,922)	(38,049)	(30,021)
減価償却費(連結調整勘定を含む)	Depreciation and amortization	26,023	32,281	27,361	25,617
資本的支出	Capital expenditures	15,186	32,424	39,248	40,309
その他		Others			
研究開発費(調査探鉱費を含む)	Research and development expenses	5,105	8,232	8,616	7,359
期末従業員数(人)	Number of employees	9,851	11,189	11,369	10,403

金属価格及び外国為替相場(期中平均) Metal prices and foreign exchange rates (average of fiscal year)

ロンドン金属取引所 亜鉛	LME Zinc (SHG)	(\$/t)	1,934	1,560	2,986	3,579
同上 銅	LME Copper (AG)	(\$/t)	6,101	5,864	7,584	6,970
		(c/lb)	276.7	266.0	344.0	316.2
日本円対米ドル相場(TTM)	JPY rate per US dollar		¥92.9	¥100.7	¥114.3	¥117.0
同上 期末相場	JPY rate at fiscal year-end		¥93.1	¥98.2	¥100.2	¥118.1

株価 Stock price per share

期中最高株価	Highest price of fiscal year	¥304	¥385	¥646	¥868
期中最低株価	Lowest price of fiscal year	¥163	¥122	¥303	¥506
年度末株価	Price at fiscal year-end	¥280	¥162	¥312	¥647

要約財務情報（連結） Financial Summary (Consolidated)

2006/3	2005/3	2004/3	2003/3	2002/3	2001/3	備考 Notes
※（ ）内の数字は負数を表しております						
503,370	438,143	393,928	378,608	373,442	423,707	
45,052	44,515	32,035	25,740	24,893	46,752	
50,487	45,433	29,702	21,226	18,760	38,113	
23,374	20,780	11,452	3,085	1,986	17,012	
65,738	64,425	42,034	46,189	46,577	65,720	
460,225	409,019	392,545	370,886	393,603	424,829	
159,772	133,963	115,398	103,237	105,219	105,936	⇒ 07/3期より純資産合計一少数株主持分としております
151,834	147,125	158,342	182,530	201,136	214,923	Total net assets - Minority interests from FY 07/3
0.95	1.10	1.37	1.77	1.91	2.03	
34.7%	32.8%	29.4%	27.8%	26.7%	24.9%	
572,966	572,966	572,966	559,305	559,305	559,305	
572,748	572,788	572,847	559,220	559,296	559,303	
¥278.6	¥233.6	¥201.3	¥184.4	¥188.1	¥189.4	
¥40.5	¥36.0	¥19.8	¥5.3	¥3.5	¥30.8	
¥40.5	¥36.0	¥18.9	¥5.2	¥3.4	¥29.0	
¥10.0	¥7.0	¥5.0	¥5.0	¥5.0	¥6.0	
9.0%	10.2%	8.1%	6.8%	6.7%	11.0%	
10.4%	11.1%	8.4%	6.7%	6.1%	11.2%	
5.4%	5.2%	3.0%	0.8%	0.5%	4.1%	
15.9%	16.7%	10.5%	3.0%	1.9%	18.0%	
44,800	44,016	49,787	40,707	28,587	48,745	
(43,039)	(25,792)	(14,716)	(21,988)	(18,319)	(34,699)	
24,686	22,345	21,954	29,636	27,111	24,888	
45,176	32,913	21,773	20,794	26,969	34,844	
6,351	6,502	4,975	4,414	3,208	3,742	
9,965	9,701	9,397	8,339	8,619	9,542	
1,613	1,109	899	777	830	1,101	
4,097	3,000	2,046	1,586	1,527	1,806	
185.8	136.1	92.8	72.0	69.3	81.9	
¥113.3	¥107.6	¥113.1	¥122.0	¥125.1	¥110.6	
¥117.5	¥107.3	¥105.7	¥120.2	¥133.3	¥123.9	
¥958	¥512	¥510	¥503	¥791	¥986	
¥438	¥384	¥265	¥200	¥300	¥550	
¥824	¥475	¥454	¥294	¥443	¥728	

連結貸借対照表 Consolidated Balance Sheets

(百万円 Millions of yen)

決算期 as of the ends of

2010/3 2009/3 2008/3 2007/3

資産の部	Assets	2010/3	2009/3	2008/3	2007/3
I 流動資産	I Current assets	194,834	181,415	227,923	218,436
現金及び預金	Cash and time deposits	42,351	52,915	20,645	17,306
受取手形及び売掛金	Notes and accounts receivable	73,297	47,534	98,149	92,828
有価証券	Marketable securities	-	-	-	-
たな卸資産	Inventories	67,883	63,976	92,719	88,560
繰延税金資産	Deferred tax assets	1,211	1,138	3,755	6,486
その他	Others	10,963	16,351	13,293	13,904
貸倒引当金	Allowance for doubtful accounts	(872)	(500)	(640)	(649)
II 固定資産	II Fixed assets	221,707	228,842	258,315	264,960
(1)有形固定資産	(1) Property, plant and equipment	157,007	169,299	184,168	195,604
建物及び構築物	Buildings and structures, net	51,624	54,223	61,130	68,078
機械装置及び運搬具	Machinery and equipment, net	55,614	66,488	73,415	74,687
土地	Land, net	33,936	34,280	34,348	34,773
リース資産	Lease assets	2,842	3,575	-	-
建設仮勘定	Construction in progress	7,361	5,716	6,604	9,295
その他	Others, net	5,627	5,015	8,669	8,769
(2)無形固定資産	(2) Intangible fixed assets	3,727	3,605	3,014	2,222
(3)投資その他の資産	(3) Investments and long-term receivables	60,972	55,936	71,132	67,133
投資有価証券	Investment securities	48,925	42,852	55,653	51,781
長期貸付金	Long-term loans receivable	734	779	914	954
繰延税金資産	Deferred tax assets	6,064	7,236	8,490	8,046
その他	Others	5,665	5,696	6,262	6,592
貸倒引当金	Allowance for doubtful accounts	(417)	(628)	(188)	(241)
為替換算調整勘定	Foreign currency translation adjustments	-	-	-	-
資産合計	Total assets	416,541	410,258	486,238	483,397
負債の部	Liabilities				
I 流動負債	I Current liabilities	145,565	152,542	154,782	160,847
支払手形及び買掛金	Notes and accounts payable	36,437	26,630	52,436	48,064
短期借入金	Short-term bank loans	59,185	61,325	52,172	58,843
コマーシャルペーパー	Commercial paper	10,000	20,000	-	-
社債(一年以内償還)	Current portion of bonds	10,000	10,000	10,000	1,000
転換社債(一年以内償還)	Current portion of convertible bonds	-	-	-	-
リース債務	Lease obligations	1,010	1,159	-	-
未払法人税等	Accrued income taxes	4,184	1,032	4,652	8,106
賞与引当金	Accrued bonuses	4,079	4,374	5,713	6,067
その他	Others	20,667	28,020	29,807	38,766
II 固定負債	II Long-term liabilities	149,675	153,084	131,911	124,658
社債	Bonds	40,000	40,000	40,000	40,000
転換社債	Convertible bonds	-	-	-	-
長期借入金	Long-term loans	72,329	71,142	49,750	43,376
リース債務	Lease obligations	1,697	2,357	-	-
繰延税金負債	Deferred tax liabilities	5,224	4,362	1,777	1,895
退職給付(給与)引当金	Allowance for employees' retirement benefits	23,539	28,655	33,382	30,151
環境対策引当金	Allowance for environmental remediation	2,329	2,577	2,559	3,074
負ののれん/連結調整勘定	Consolidation differences	-	122	245	3,217
その他	Others	4,554	3,865	4,194	2,942
負債合計	Total liabilities	295,240	305,626	286,693	285,506
純資産の部	Net assets				
I 資本金	I Common stock	42,129	42,129	42,129	42,129
II 資本剰余金	II Capital surplus	22,557	22,557	22,557	22,557
III 利益剰余金	III Retained earnings	57,195	43,659	117,548	117,181
IV 自己株式	IV Treasury stock	(506)	(503)	(131)	(116)
V その他有価証券評価差額金	V Net unrealized gains on securities	2,050	842	2,743	5,081
VI 繰延ヘッジ損益	VI Loss on deferred hedge	16	(4,370)	2,354	(1,160)
VII 為替換算調整勘定	VII Foreign currency translation adjustments	(12,100)	(10,169)	(2,206)	(160)
自己資本(旧基準:資本合計)	Total shareholders' equity	111,341	94,145	184,995	185,513
少数株主持分	Minority interests	9,958	10,485	14,550	12,377
純資産合計	Total net assets	121,300	104,631	199,545	197,890
負債、純資産合計	Total liabilities and net assets	416,541	410,258	486,238	483,397

連結貸借対照表 Consolidated Balance Sheets

2006/3	2005/3	2004/3	2003/3	2002/3	2001/3	備考 Notes
						※ ()内の数字は負数を表しております
208,754	172,912	156,658	147,729	155,238	180,557	
16,944	16,143	12,276	10,356	11,178	16,647	
83,496	76,447	74,122	62,328	69,405	89,711	
-	-	31	-	52	84	
79,165	64,141	49,470	62,591	63,489	60,565	
5,677	5,467	5,197	2,975	2,890	2,364	
23,995	11,191	16,040	10,271	9,143	11,845	
(525)	(478)	(480)	(793)	(921)	(663)	
251,471	236,107	235,887	223,157	238,365	244,271	
203,906	196,298	194,863	188,580	199,364	201,329	
65,880	63,483	67,800	69,760	72,875	74,696	
82,044	73,709	68,898	74,014	80,847	77,874	
38,190	43,148	43,401	36,098	36,381	36,036	
-	-	-	-	-	-	
8,843	7,947	6,716	2,448	2,906	5,840	
8,947	8,009	8,045	6,257	6,353	6,881	
2,194	2,238	2,431	2,062	4,827	5,694	
45,370	37,569	38,592	32,514	34,172	37,247	
32,425	24,404	24,060	17,893	21,162	24,556	
4,775	3,945	3,661	3,500	3,686	4,126	
5,762	7,507	8,765	9,285	7,836	6,143	
6,291	4,921	5,050	4,912	4,777	5,649	
(3,883)	(3,208)	(2,945)	(3,076)	(3,290)	(3,228)	
-	-	-	-	-	-	⇒ 01/3期以降は資本の部に計上しております Included in the shareholders' equity section from FY 01/3
460,225	409,019	392,545	370,886	393,603	424,829	
162,170	139,369	147,791	161,405	167,004	184,771	
46,896	36,580	36,402	25,933	27,069	36,588	
63,623	62,235	78,903	90,063	102,832	108,726	⇒ 長期借入金の一年内返済分を含んでおります Including current portion of long-term loans
-	-	-	5,000	3,000	2,000	
-	50	-	-	5,000	-	
-	-	-	13,371	-	-	
-	-	-	-	-	-	
9,221	11,200	3,231	3,533	3,604	8,952	
5,567	5,347	5,129	4,788	4,997	5,876	
36,861	23,956	24,124	18,716	20,499	22,627	
126,558	125,022	118,947	95,547	110,820	124,107	
31,000	21,000	11,050	50	-	5,350	
-	-	-	-	13,371	13,371	
57,210	63,840	68,388	74,045	76,932	85,475	
-	-	-	-	-	-	
1,326	1,033	1,124	969	2,000	1,362	
28,405	27,688	23,610	17,329	14,767	13,886	⇒ 01/3期から会計方針を変更しております
-	-	-	-	-	-	
6,209	8,974	11,573	118	-	-	
2,406	2,486	3,200	3,035	3,749	4,662	
288,729	264,392	266,739	256,953	277,824	308,879	
						⇒ 07/3期より表示が変更となりました
42,129	42,129	42,129	42,129	42,129	42,129	
22,557	22,557	22,557	18,570	18,570	18,570	
91,275	72,051	54,302	45,816	45,975	47,481	
(93)	(68)	(41)	(26)	(4)	(1)	
5,914	2,662	2,593	331	415	1,727	
-	-	-	-	-	-	
(2,011)	(5,369)	(6,143)	(3,584)	(1,867)	(3,970)	
159,772	133,963	115,398	103,237	105,219	105,936	⇒ 指標の連続性のため、旧基準にて表示しております
11,724	10,662	10,407	10,695	10,559	10,013	
171,496	144,626	125,805	113,932	115,778	115,949	
460,225	409,019	392,545	370,886	393,603	424,829	

連結損益計算書 Consolidated Statements of Income

(百万円 Millions of yen)		決算期 for fiscal years ended	2010/3	2009/3	2008/3	2007/3
I	売上高	Net Sales	392,364	427,191	595,463	591,518
II	売上原価	Cost of sales	325,492	405,253	510,085	500,734
	売上総利益	Gross profit	66,871	21,937	85,378	90,784
III	販売費及び一般管理費	Selling, general and administrative expenses	38,990	48,969	57,384	51,918
	営業利益	Operating income	27,881	(27,031)	27,993	38,865
IV	営業外収益	Other income	3,180	2,316	19,143	24,028
	受取利息及び受取配当金	Interest and dividend income	408	2,050	1,961	2,916
	為替差益	Foreign exchange gain	-	-	-	-
	負ののれん/連結調整勘定償却額	Amortization of consolidation differences	96	109	2,971	2,991
	持分法による投資利益	Equity in earnings of unconsolidated subsidiaries and affiliates	1,609	(1,277)	11,601	14,445
	その他雑収益	Others	1,066	1,434	2,609	3,675
V	営業外費用	Other expenses	5,422	5,595	5,357	6,308
	支払利息	Interest expense	2,810	3,032	3,053	2,696
	有価証券評価損	Write-down of marketable securities	-	-	-	-
	為替差損	Foreign exchange loss	565	936	-	-
	たな卸資産評価損	Write-down of inventories	-	-	-	-
	その他雑費用	Others	2,046	1,625	2,303	3,611
	経常利益	Recurring income	25,639	(30,310)	41,780	56,585
VI	特別利益	Extraordinary income	2,590	689	4,689	12,045
	固定資産売却益	Gain on sale of property, plant and equipment	147	457	307	221
	投資有価証券売却益	Gain on sale of investment securities	-	-	274	141
	連結子会社株式売却益	Gain on sale of shares in consolidated subsidiaries	-	-	-	-
	事業譲渡益	Gain on transfer of business	-	-	-	11,519
	鉱業権売却益	Gain on sale of mining rights	-	-	3,660	-
	過年度未実現利益修正額	Prior years' adjustments	-	-	-	-
	その他特別利益	Others	2,443	232	446	163
VII	特別損失	Extraordinary expenses	6,675	25,493	23,814	19,497
	賠償金及び補償金	Indemnity	114	154	150	320
	貸倒損失及び貸倒引当金繰入	Write-off and provision for doubtful accounts	-	-	-	-
	退職給付	Amortization of net transition obligation	-	-	-	-
	会計基準移行時差異償却	for retirement benefits	-	-	-	-
	投資有価証券評価損	Write-down of investment securities	912	1,119	17	237
	固定資産除却損	Loss on disposal of property, plant and equipment	720	1,028	1,814	3,396
	固定資産売却損	Loss on sale of property, plant and equipment	37	65	206	436
	減損損失・固定資産評価損	Loss on impairment of fixed assets	674	11,831	18,514	1,334
	連結調整勘定一括償却	Write-down of goodwill	-	-	-	-
	たな卸資産売却損	Loss on sale of inventories	-	-	-	-
	たな卸資産評価損	Write-down of inventories	-	4,728	-	-
	関係会社整理損	Loss from liquidation of subsidiaries	-	-	-	6,527
	無償修理等負担金	Cost of warranty and other free repairs	-	-	-	-
	退職給与引当金繰入及び退職給与加算金等	Additional retirement benefits and provision for retirement benefits	-	-	-	-
	連結子会社株式売却損	Loss on sale of securities of consolidated subsidiaries	-	-	-	63
	環境対策費用	Loss from environmental remediation	-	-	-	3,511
	その他特別損失	Others	4,217	6,565	3,110	3,669
	税金等調整前 当期純利益	Income before income taxes and minority interests	21,555	(55,114)	22,655	49,133
	法人税、住民税及び事業税	Income taxes - current	3,332	4,853	10,114	14,753
	法人税等調整額	Income taxes - deferred	3,957	7,528	1,927	(183)
	少数株主利益	Minority interests	365	(240)	2,783	3,193
	当期純利益	Net income	13,899	(67,256)	7,830	31,370

連結損益計算書 Consolidated Statements of Income

2006/3	2005/3	2004/3	2003/3	2002/3	2001/3	備考 Notes
503,370	438,143	393,928	378,608	373,442	423,707	※ ()内の数字は負数を表しております
412,003	350,565	319,725	313,416	310,474	333,140	
91,366	87,578	74,202	65,192	62,968	90,566	
46,314	43,062	42,167	39,451	38,075	43,813	
45,052	44,515	32,035	25,740	24,893	46,752	
10,409	6,625	5,758	2,192	1,884	2,752	
648	592	481	444	614	627	
-	-	-	564	-	-	
2,963	2,896	2,892	-	-	-	
4,468	2,501	933	-	-	1,048	
2,329	635	1,450	1,184	1,270	1,076	
4,974	5,708	8,091	6,706	8,017	11,391	
2,416	2,360	2,945	3,443	4,616	5,812	
-	-	-	-	-	-	
-	897	264	-	444	2,255	
-	-	1,063	-	-	-	
2,558	2,449	3,818	3,263	2,956	3,324	
50,487	45,433	29,702	21,226	18,760	38,113	
1,231	1,462	2,249	1,289	4,206	3,289	
162	949	397	330	1,474	2,351	
898	325	844	312	33	127	
-	-	647	-	2,091	-	
-	-	-	-	-	-	
-	-	-	-	-	-	
169	188	358	647	606	810	
13,081	10,981	18,621	13,208	12,177	10,758	
644	531	554	750	1,379	1,005	
-	-	-	-	720	669	
-	3,806	3,806	3,803	4,061	4,376	
626	253	827	2,556	1,218	1,268	
1,659	2,789	2,579	1,856	1,492	1,344	
234	1,575	212	66	57	929	
7,791	-	1,152	1,315	-	-	
-	-	-	1,712	-	-	
-	-	3,158	-	-	-	
-	-	-	-	-	-	
649	-	1,997	-	-	-	
-	-	3,438	-	-	-	
-	-	-	-	1,626	-	
-	-	-	-	-	-	
-	-	-	-	-	-	
1,476	2,025	894	1,146	1,618	1,163	
38,636	35,914	13,329	9,307	10,789	30,644	
13,397	13,323	5,055	7,791	9,466	14,856	
(227)	815	(3,324)	(2,058)	(1,231)	(2,430)	
2,092	995	145	489	568	1,207	
23,374	20,780	11,452	3,085	1,986	17,012	

連結キャッシュフロー計算書 Consolidated Statements of Cash Flows

(百万円 Millions of yen)

決算期 for fiscal years ended

2010/3

2009/3

2008/3

2007/3

		2010/3	2009/3	2008/3	2007/3
I 営業活動によるキャッシュフロー	Cash flows from operating activities				
税金等調整前当期純利益	Income before income taxes and minority interests	21,555	(55,114)	22,655	49,133
減価償却費(連結調整勘定を含む)	Depreciation and amortization	26,023	32,281	27,361	25,617
減損損失・固定資産評価損	Loss on impairment of fixed assets	674	11,831	18,514	1,334
退職給付	Amortization of net transition obligation	-	-	-	-
会計基準移行時差異償却	for retirement benefits	-	-	-	-
事業譲渡益	Gain on transfer of business	-	-	-	(11,519)
鉱業権売却益	Gain on sale of mining rights	-	-	(3,660)	-
環境対策費用引当金繰入	Loss on provision for environmental remediation	394	977	156	3,074
為替差損益	Foreign exchange loss(gain)	(110)	99	59	(159)
持分法による投資損益	Equity in loss(earnings) of unconsolidated subsidiaries and affiliates	(1,609)	1,277	(11,601)	(14,445)
支払利息	Interest expense	2,810	3,032	3,053	2,696
売上債権の増減額	Decrease(increase) in notes and accounts receivable	(25,188)	46,114	(6,210)	(11,221)
たな卸資産の増減額	Decrease(increase) in inventories	(3,519)	25,384	(4,479)	(13,508)
仕入債務の増減額	Increase(decrease) in notes and accounts payable	9,463	(22,706)	1,128	2,460
その他	Others	(7,819)	(7,394)	4,833	12,137
小計	Subtotal	22,673	35,784	51,811	45,600
利息及び配当金の受取額	Interest and dividends received	726	5,504	6,477	7,143
利息の支払額	Interest paid	(2,788)	(2,900)	(2,946)	(2,712)
保証債務の履行による支払額	Payment for execution of a guarantee	-	-	-	-
賠償金及び補償金の支払額	Indemnity paid	(114)	(154)	(150)	(320)
合理化退職金の支出	Payment for retirement benefit for rationalization	(2,253)	-	-	-
法人税等の支払額	Income taxes paid	(3,215)	(8,191)	(13,533)	(15,634)
法人税等の還付額	Income taxes refunded	4,605	-	-	-
その他	Others	(22)	(3)	-	-
営業活動によるキャッシュフロー	Net cash provided by operating activities	19,610	30,038	41,657	34,077
II 投資活動によるキャッシュフロー	Cash flows from investing activities				
有価証券の取得による支出	Purchase of securities	(2,977)	(2,389)	(1,760)	(13,717)
有価証券の売却による収入	Sale of securities	-	102	372	242
連結子会社株式の売却による収入(支出)	Sale of shares in consolidated subsidiaries	-	-	-	231
有形固定資産の取得による支出	Acquisition of property, plant and equipment	(13,469)	(33,821)	(39,510)	(38,900)
有形固定資産の売却による収入	Sale of property, plant and equipment	730	449	1,640	2,046
鉱業権売却による収入	Proceeds from sale of mining rights	392	502	3,936	-
長期貸付金の貸付による支出	Disbursement for long-term loans receivable	(110)	(9)	(462)	(863)
長期貸付金の回収による収入	Collection of long-term loans receivable	155	143	159	167
事業譲渡による収入	Proceeds from transfer of business	-	-	-	22,337
その他	Others	(2,544)	(1,900)	(2,425)	(1,565)
投資活動によるキャッシュフロー	Net cash used in investing activities	(17,823)	(36,922)	(38,049)	(30,021)
III 財務活動によるキャッシュフロー	Cash flows from financing activities				
短期借入金の増減額	Net increase(decrease) in short-term bank loans	(8,214)	10,340	4,751	(6,915)
コマーシャルペーパーの増減額	Net increase(decrease) in commercial paper	(10,000)	20,000	-	-
長期借入による収入	Proceeds from long-term debt	17,046	32,594	17,414	16,393
長期借入金の返済による支出	Repayment of long-term debt	(10,787)	(10,301)	(23,543)	(17,569)
社債及び転換社債の発行による収入	Issuance of bonds and convertible bonds	10,000	10,000	10,000	10,000
社債及び転換社債の償還による支出	Redemption of bonds and convertible bonds	(10,000)	(10,000)	(1,000)	-
配当金の支払額	Payment for cash dividends to shareholders	-	(6,872)	(6,872)	(5,727)
少数株主への配当金支払額	Payment for cash dividends to minority interests	(111)	(1,324)	(1,344)	(838)
その他	Others	(1,121)	(2,068)	(150)	(87)
財務活動によるキャッシュフロー	Net cash used in financing activities	(13,188)	42,367	(744)	(4,744)
IV 現金及び現金同等物に係る換算差額	Effect of exchange rate changes on cash and cash equivalents	560	(3,213)	149	529
V 現金及び現金同等物の増減額	Net increase(decrease) in cash and cash equivalents	(10,840)	32,270	3,012	(159)
VI 現金及び現金同等物の期首残高	Cash and cash equivalents at beginning of year	52,915	20,645	17,304	16,944
VII 新規連結子会社の現金及び現金同等物の期首残高	Effect of additions of consolidated subsidiaries	280	-	328	520
VIII 連結除外に伴う現金及び現金同等物の減少額	Effect of exclusions of consolidated subsidiaries	(5)	-	-	-
IX 現金及び現金同等物の期末残高	Cash and cash equivalents at end of year	42,348	52,915	20,645	17,304

連結キャッシュフロー計算書 Consolidated Statements of Cash Flows

2006/3	2005/3	2004/3	2003/3	2002/3	2001/3	備考 Notes
※ ()内の数字は負数を表しております						
38,636	35,914	13,329	9,307	10,789	30,644	
24,686	22,345	21,954	29,636	27,111	24,888	
7,791	-	1,152	1,315	-	-	
-	3,806	3,806	3,803	4,061	4,376	
-	-	-	-	-	-	
-	-	-	-	-	-	
-	-	-	-	-	-	
(39)	(144)	155	(325)	465	2,571	
(4,468)	(2,501)	(933)	77	31	(1,048)	
2,416	2,360	2,945	3,443	4,616	5,812	
(5,345)	(2,284)	(3,987)	6,898	17,191	3,471	
(13,751)	(14,376)	15,337	640	(4,176)	(2,095)	
9,567	19	3,956	(1,452)	(9,493)	(1,065)	
915	5,748	320	(1,041)	(566)	226	
60,409	50,887	58,036	52,303	50,030	67,781	
2,700	1,251	597	553	666	686	
(2,389)	(2,517)	(2,923)	(3,489)	(4,776)	(5,814)	
-	-	-	-	-	-	
(644)	(531)	(554)	(750)	(1,379)	(1,005)	
-	-	-	-	(1,221)	-	
(15,275)	(5,074)	(5,368)	(7,910)	(14,731)	(12,444)	
-	-	-	-	-	-	
-	-	-	-	-	(457)	
44,800	44,016	49,787	40,707	28,587	48,745	
(2,165)	(236)	(2,240)	(2,710)	(657)	(1,632)	
1,571	461	3,011	1,139	560	358	
285	-	885	(43)	5,333	-	
(41,461)	(32,528)	(21,263)	(20,344)	(26,604)	(34,182)	
2,402	6,495	1,261	1,285	2,779	3,894	
-	-	-	-	-	-	
(1,247)	(129)	(207)	(25)	(122)	(332)	
3	107	106	138	295	3,051	
-	-	-	-	-	-	
(2,428)	37	3,730	(1,427)	96	(5,855)	
(43,039)	(25,792)	(14,716)	(21,988)	(18,319)	(34,699)	
(2,285)	(14,492)	(10,950)	(12,566)	(2,347)	12,364	
-	-	(5,000)	2,000	1,000	2,000	
12,511	13,207	20,818	21,808	19,067	23,786	
(16,920)	(20,289)	(31,486)	(23,484)	(29,996)	(49,803)	
10,000	10,000	10,000	-	-	-	
(50)	-	(13,371)	(5,000)	-	-	
(4,009)	(2,864)	(2,870)	(2,796)	(3,355)	(3,237)	
(417)	(403)	(125)	(132)	(248)	(339)	
(107)	(105)	(3)	18	33	5	
(1,278)	(14,947)	(32,989)	(20,152)	(15,846)	(15,224)	
319	115	(119)	(250)	117	(19)	
801	3,391	1,962	(1,684)	(5,461)	(1,197)	
16,143	12,274	10,312	11,230	16,692	17,663	
-	476	-	766	-	227	
-	-	-	-	-	-	
16,944	16,143	12,274	10,312	11,230	16,692	

事業別セグメント情報 Business Segment Information

(百万円 Millions of yen)		決算期 for fiscal years ended			
		2010/3	2009/3	2008/3	2007/3
売上高	Sales (including intergroup sales)				
鉱山・基礎素材	Mining & Fundamental Materials	99,061	93,532	142,120	113,564
中間素材	Intermediate Materials	153,937	174,847	243,772	249,287
組立加工	Parts Manufacturing and Assembly	104,526	119,535	153,821	161,756
環境・リサイクル	Environmental Engineering & Metals Recycling	50,800	51,323	69,092	53,350
エンジニアリング・サービス等	Engineering & Services	60,418	70,329	88,274	108,043
消去または全社	Elimination	(76,379)	(82,377)	(101,618)	(94,485)
連結	Consolidated	392,364	427,191	595,463	591,518
営業利益	Operating income				
鉱山・基礎素材	Mining & Fundamental Materials	7,036	(9,619)	12,582	10,998
中間素材	Intermediate Materials	14,525	(12,906)	6,090	18,336
組立加工	Parts Manufacturing and Assembly	901	(4,019)	73	1,585
環境・リサイクル	Environmental Engineering & Metals Recycling	3,466	(2,910)	4,939	3,202
エンジニアリング・サービス等	Engineering & Services	1,682	2,204	3,232	4,533
消去または全社	Elimination	(268)	219	1,073	209
連結	Consolidated	27,881	(27,031)	27,993	38,865
売上高営業利益率	Operating income to net sales				
鉱山・基礎素材	Mining & Fundamental Materials	7.1%	(10.3%)	8.9%	9.7%
中間素材	Intermediate Materials	9.4%	(7.4%)	2.5%	7.4%
組立加工	Parts Manufacturing and Assembly	0.9%	(3.4%)	0.0%	1.0%
環境・リサイクル	Environmental Engineering & Metals Recycling	6.8%	(5.7%)	7.1%	6.0%
エンジニアリング・サービス等	Engineering & Services	2.8%	3.1%	3.7%	4.2%
連結	Consolidated	7.1%	(6.3%)	4.7%	6.6%
資産(期末)	Allocated assets at fiscal year-end				
鉱山・基礎素材	Mining & Fundamental Materials	122,303	113,023	139,698	115,923
中間素材	Intermediate Materials	133,519	128,575	180,762	206,043
組立加工	Parts Manufacturing and Assembly	93,100	99,349	111,518	105,497
環境・リサイクル	Environmental Engineering & Metals Recycling	39,072	39,402	41,199	39,447
エンジニアリング・サービス等	Engineering & Services	58,691	58,196	47,282	57,670
消去または全社	Elimination	(30,146)	(28,288)	(34,224)	(41,185)
連結	Consolidated	416,541	410,258	486,238	483,397
投下資本営業利益率	Ratio of operating income to *allocated assets (* average of beginning and end)				
鉱山・基礎素材	Mining & Fundamental Materials	6.0%	(7.6%)	9.8%	9.4%
中間素材	Intermediate Materials	11.1%	(8.3%)	3.1%	9.5%
組立加工	Parts Manufacturing and Assembly	0.9%	(3.8%)	0.1%	1.5%
環境・リサイクル	Environmental Engineering & Metals Recycling	8.8%	(7.2%)	12.2%	8.9%
エンジニアリング・サービス等	Engineering & Services	2.9%	4.2%	6.2%	7.6%
連結	Consolidated	6.7%	(6.0%)	5.8%	8.2%
減価償却費	Depreciation				
鉱山・基礎素材	Mining & Fundamental Materials	7,429	8,064	6,068	4,566
中間素材	Intermediate Materials	9,603	14,388	17,095	16,878
組立加工	Parts Manufacturing and Assembly	6,077	6,902	6,113	5,535
環境・リサイクル	Environmental Engineering & Metals Recycling	2,741	2,760	1,844	1,456
エンジニアリング・サービス等	Engineering & Services	395	419	372	457
消去または全社	Elimination	(127)	(145)	(1,161)	(286)
連結	Consolidated	26,119	32,390	30,333	28,608
資本的支出	Capital expenditures				
鉱山・基礎素材	Mining & Fundamental Materials	3,704	5,814	10,216	7,664
中間素材	Intermediate Materials	6,543	15,568	18,771	25,141
組立加工	Parts Manufacturing and Assembly	3,576	7,609	6,834	5,418
環境・リサイクル	Environmental Engineering & Metals Recycling	1,311	3,400	3,323	2,427
エンジニアリング・サービス等	Engineering & Services	95	181	107	416
消去または全社	Elimination	(46)	(149)	(5)	(759)
連結	Consolidated	15,186	32,424	39,248	40,309

事業別セグメント情報 Business Segment Information

2006/3	2005/3	2004/3	2003/3	2002/3	2001/3	備考 Notes
※ ()内の数字は負数を表しております						
93,750	78,077	77,442	116,453	134,294	147,768	
208,347	176,008	143,179	142,193	135,252	169,768	
159,311	145,657	136,007	85,455	86,664	93,111	
38,843	31,574	26,922	22,247			⇒ 03/3期に新設しております
87,338	66,595	55,263	52,687	58,943	77,547	Newly established in FY 03/3.
(84,221)	(59,770)	(44,889)	(40,428)	(41,712)	(64,489)	
503,370	438,143	393,928	378,608	373,442	423,707	
4,549	2,677	2,032	1,638	5,449	4,834	
30,470	30,583	20,030	14,443	11,495	34,087	
2,883	4,981	4,440	5,700	6,054	5,274	
2,170	2,378	1,896	1,176			
4,429	3,173	2,752	1,876	1,582	2,102	
547	721	883	904	310	453	
45,052	44,515	32,035	25,740	24,893	46,752	
4.9%	3.4%	2.6%	1.4%	4.1%	3.3%	
14.6%	17.4%	14.0%	10.2%	8.5%	20.1%	
1.8%	3.4%	3.3%	6.7%	7.0%	5.7%	
5.6%	7.5%	7.0%	5.3%			
5.1%	4.8%	5.0%	3.6%	2.7%	2.7%	
9.0%	10.2%	8.1%	6.8%	6.7%	11.0%	
118,551	105,980	98,703	118,853	149,415	150,869	
179,752	152,626	146,832	155,531	168,371	188,937	
109,876	102,591	100,172	53,562	56,433	65,127	
32,336	30,288	27,822	20,211			
60,842	49,316	52,183	49,602	54,742	52,611	
(41,134)	(31,784)	(33,169)	(26,875)	(35,360)	(32,716)	
460,225	409,019	392,545	370,886	393,603	424,829	
of fiscal year)						
4.1%	2.6%	1.9%	1.4%	3.6%	3.2%	
18.3%	20.4%	13.2%	8.9%	6.4%	19.5%	
2.7%	4.9%	5.8%	10.6%	10.0%	7.9%	
6.9%	8.2%	7.9%	5.8%			
8.0%	6.3%	5.4%	3.6%	2.9%	3.8%	
10.4%	11.1%	8.4%	6.7%	6.1%	11.2%	
6,117	5,952	6,110	8,038	8,465	8,233	
15,113	13,161	12,472	14,915	13,753	11,207	
4,817	4,537	4,731	2,871	3,325	4,092	
1,341	1,223	1,097	885			
468	590	674	746	808	848	
(209)	(222)	(240)	(250)	(70)	(153)	
27,650	25,242	24,846	27,207	26,283	24,228	
9,613	7,523	4,899	4,855	7,840	8,772	
27,170	17,236	10,009	11,278	16,365	21,507	
6,978	5,936	4,841	3,546	2,977	4,744	
2,092	2,054	1,755	953			
287	284	267	258	293	372	
(966)	(121)	-	(99)	(508)	(552)	
45,176	32,913	21,773	20,794	26,969	34,844	

設立以来の業績推移 Performance since Establishment

(百万円 Millions of yen)

決算期 Fiscal year ended March	売上高 Net sales	営業利益 Operating income	経常利益 Recurring income	当期純利益 Net income	総資産 Total assets	自己資本 Shareholders' equity	1株配当 Dividends per share	
2010/3	392,364	27,881	25,639	13,899	416,541	111,341	¥3.0	
2009/3	427,191	(27,031)	(30,310)	(67,256)	410,258	94,145	-	
2008/3	595,463	27,993	41,780	7,830	486,238	184,995	¥12.0	
2007/3	591,518	38,865	56,585	31,370	483,397	185,513	¥12.0	
2006/3	503,370	45,052	50,487	23,374	460,225	159,772	¥10.0	
2005/3	438,143	44,515	45,433	20,780	409,019	133,963	¥7.0	
2004/3	393,928	32,035	29,702	11,452	392,545	115,398	¥5.0	
2003/3	378,608	25,740	21,226	3,085	370,886	103,237	¥5.0	
2002/3	373,442	24,893	18,760	1,986	393,603	105,219	¥5.0	
2001/3	423,707	46,752	38,113	17,012	424,829	105,936	¥6.0	
2000/3	394,722	35,474	27,847	14,181	412,103	83,489	¥6.0	
1999/3	400,399	35,295	24,786	12,344	433,647	55,269	¥5.0	
1998/3	426,724	37,498	22,056	9,581	456,963	46,091	¥5.0	
1997/3	400,349	28,482	16,208	5,414	462,313	38,838	¥4.0	
1996/3	370,433	23,632	9,747	7,606	458,449	35,018	¥3.0	
1995/3	342,311	12,652	562	(9,125)	454,257	19,313	-	
1994/3	317,127	9,010	(4,004)	(5,173)	448,208	29,768	-	
1993/3	336,521	10,283	(2,455)	(4,281)	436,681	33,791	¥4.0	
1992/3	454,785	18,652	5,161	4,757	434,552	43,907	¥4.0	
1991/3	511,005	29,458	12,762	6,423	440,244	41,834	¥4.0	
1990/3	405,902	30,830	17,978	10,725	398,420	38,307	¥4.0	
1989/3	314,667	24,653	15,038	5,723	365,853	24,031	-	
1988/3	315,931	13,706	5,185	4,260	351,131	16,889	-	
1987/3	289,690	8,493	(645)	(9,803)	305,482	12,351	-	
1986/3	310,053	10,900	(304)	(3,200)	310,672	20,252	-	
1985/3	313,451	21,228	7,752	5,142	309,563	23,510	-	
1984/3	311,427	17,122	4,014	2,274	284,450	17,430	-	
1983/3	284,250	13,942	(2,319)	(275)	294,712	18,980	-	
1982/3	286,229	14,542	(4,604)	(4,936)	305,435	18,892	-	
1981/3	302,748	14,013	(2,966)	(373)	294,677	23,822	-	連結 Consolidated
1980/3	310,426	21,772	7,886	4,466	312,745	23,495	-	
1979/3	200,059	1,151	(7,184)	(6,363)	274,557	19,051	-	
1978/3	209,157	4,515	(8,063)	(6,054)	266,671	25,431	-	
<hr/>								
1978/3	188,239	1,379	(8,217)	(4,593)	232,201	27,718	-	
1977/3	204,423	12,323	1,562	1,738	251,801	34,285	¥4.0	
1976/3	166,444	10,312	930	2,640	248,172	35,012	¥5.0	
1975/3	204,390	13,585	6,900	2,337	205,114	33,271	¥5.0	
1974/3	202,691	19,887	8,534	1,915	199,891	24,403	¥2.5	
1973/3	129,349	5,964	899	(507)	148,684	22,488	-	
1972/3	114,496	3,967	545	545	145,969	23,652	¥4.5	
1971/3	116,880	3,625	1,125	1,834	132,670	24,641	¥5.5	
1970/3	118,582	7,344	3,671	1,828	120,525	19,164	¥5.0	
1969/3	89,690	3,693	1,360	844	99,322	18,438	¥5.0	
1968/3	76,983	3,365	1,766	1,365	91,102	18,689	¥5.0	
1967/3	69,912	4,272	N/A	1,471	69,083	18,423	¥5.0	
1966/3	57,201	4,269	N/A	1,204	64,755	18,051	¥5.0	
1965/3	50,101	3,236	N/A	1,293	57,569	17,820	¥5.0	
1964/3	41,344	2,877	N/A	843	50,402	14,021	¥5.0	
1963/3	33,495	1,758	N/A	816	45,738	13,908	¥5.5	
1962/3	33,012	2,397	N/A	922	38,075	11,471	¥6.0	
1961/3	28,952	2,519	N/A	865	33,091	11,139	¥6.0	
1960/3	25,935	2,567	N/A	922	27,532	10,935	¥7.5	
1959/3	21,428	2,039	N/A	832	26,095	10,747	¥7.5	
1958/3	20,702	2,483	N/A	735	21,989	8,042	¥9.0	
1957/3	22,334	2,770	N/A	820	18,730	7,756	¥9.0	
1956/3	18,613	2,137	N/A	707	17,928	7,384	¥9.0	
1955/3	16,969	2,157	N/A	675	17,415	7,126	¥12.5	
1954/3	17,478	2,429	N/A	778	15,894	5,869	¥15.0	
1953/3	15,010	1,718	N/A	858	13,985	5,505	¥15.0	
1952/3	18,805	3,601	N/A	1,293	12,237	5,071	¥20.0	
1951/3	11,075	2,112	N/A	1,004	6,757	2,788	¥18.75	
設立時 as of establishment in May 1950					2,809	600		単独 Non-consolidated

注) 63/3期以前につき現行基準に合わせるため貸倒引当金・税金引当金の組替えを行っております。
 Note: Some adjustments have been made for FY 63/3 and before regarding doubtful loan reserve and tax reserve in order to maintain consistency with current accounting standards.

■取締役 Board of Directors

代表取締役会長 Chairman Representative Director	宮村 眞平 MIYAMURA, Shimpei	CEO(最高経営責任者) Chief Executive Officer
代表取締役社長 President Representative Director	仙田 貞雄 SENDA, Sadao	COO(最高業務執行責任者) Chief Operating Officer
取締役 Directors	蓮尾 充彦 HASUO, Mitsuhiro	専務執行役員 Senior Managing Executive Officer
	樋口 修 HIGUCHI, Osamu	常務執行役員、CRO(最高危機管理責任者) Senior Executive Officer Chief Risk Management Officer
	樋口 徹 HIGUCHI, Toru	常務執行役員、CFO(最高財務責任者) Senior Executive Officer Chief Financial Officer
	上川 満 UEKAWA, Mitsuru	常務執行役員 Senior Executive Officer
	坂井 治文 SAKAI, Harufumi	常務執行役員 Senior Executive Officer
社外取締役 Outside Director	柴田 裕通 SHIBATA, Hiromichi	

■監査役 Corporate Auditors

常勤監査役 Standing Auditors	高井 龍彦 TAKAI, Tatsuhiko	小佐野 明 OSANO, Akira
社外監査役 Outside Auditors	佐藤 順哉 SATO, Junya	若杉 隆平 WAKASUGI, Ryuhei

■上席執行役員 Senior Executive Officers

森田 正久 MORITA, Masashisa	名井 肇 MYOI, Hajime
----------------------------	----------------------

■執行役員 Executive Officers

佐藤 敬 SATO, Takashi	渡辺 浩介 WATANABE, Kosuke	藤井 純 FUJII, Jun	渋谷 隆雄 SHIBUE, Takao
原川 誠一 HARAKAWA, Seiichi	佐藤 幹二 SATO, kanji	小谷田 雅行 KOYATA, Masayuki	久岡 一史 HISAOKA, Isshi
森 俊樹 MORI, Toshiki	町田 稔 MACHIDA, Minoru	吾妻 伸一 AZUMA, Shinichi	西田 計治 NISHIDA, Keiji
吉田 亮 YOSHIDA, Akira			

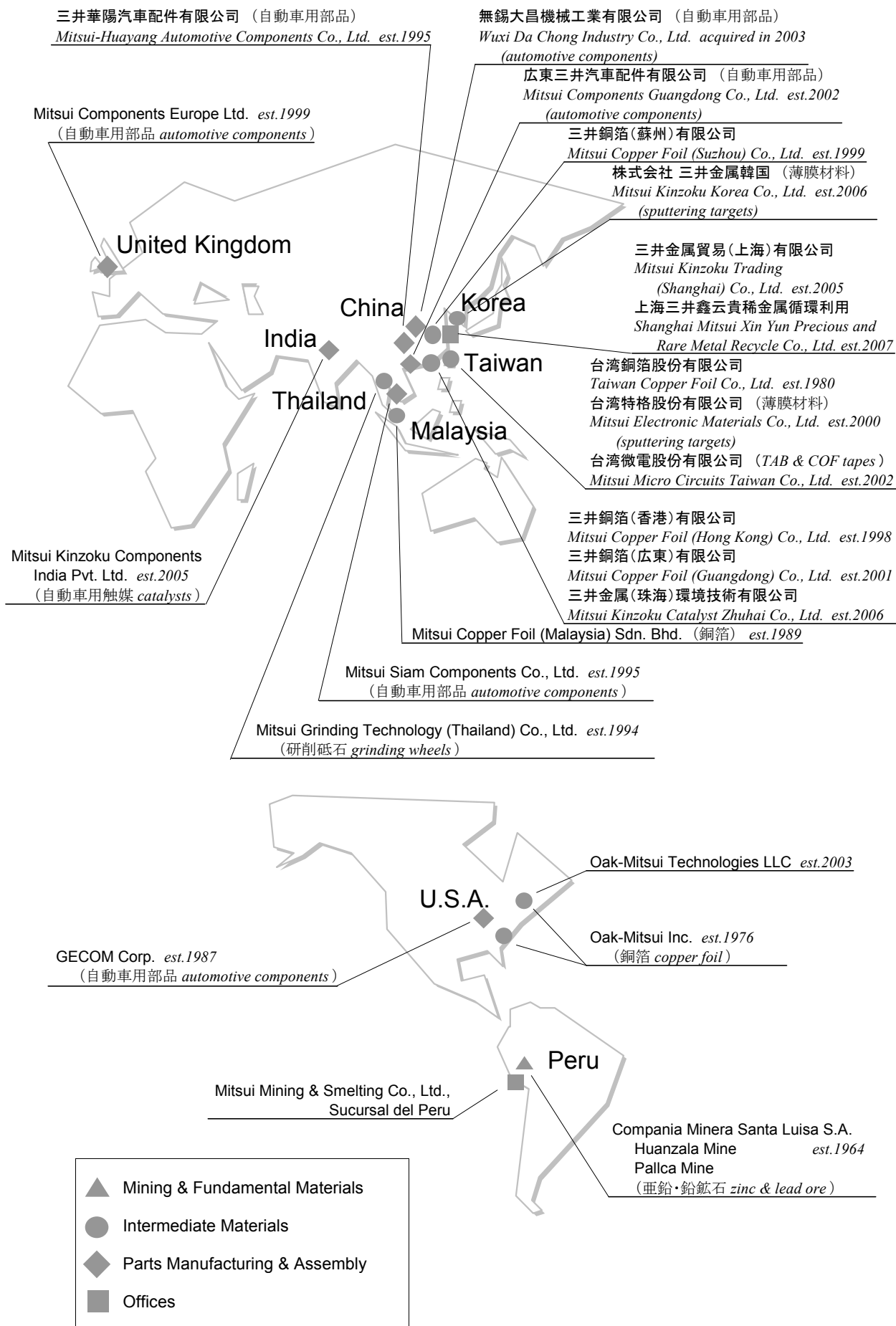
主要事業所・関係会社 Major Plants and Offices

《国内 Japan》

※西暦年号は会社設立年(または取得年)



《海外 Overseas》



■前史

Prehistory

養老年間 神岡地域で初めて銅山が開坑されたといわれる
It is said that a copper mine was developed in the Kamioka area in the early eighth century.

明治7年 三井組が神岡で鉱山経営を開始
In 1874, the Mitsui Clan began mining operations in Kamioka.

明治44年 三井鉱山株式会社設立
In 1911, Mitsui Mining Co., Ltd. was established

昭和25年 三井鉱山株式会社の金属部門が神岡鉱業株式会社として分離（昭和27年に三井金属鉱業株式会社と改称）
In 1950, the metals division of Mitsui Mining Co. was separated as Kamioka Mining & Smelting Co., Ltd.
(renamed Mitsui Mining & Smelting Co., Ltd. in 1952)

■設立

Established

昭和25年5月1日
May 1, 1950

■資本金

Paid-in capital

42,129百万円
JPY 42,129 million

■従業員数(連結)

Number of employees

9,851名

■発行済株式総数

Total number of shares issued

572,966,166株

■上場取引所

Stock listings

東京・大阪証券取引所
Tokyo and Osaka domestic stock exchanges

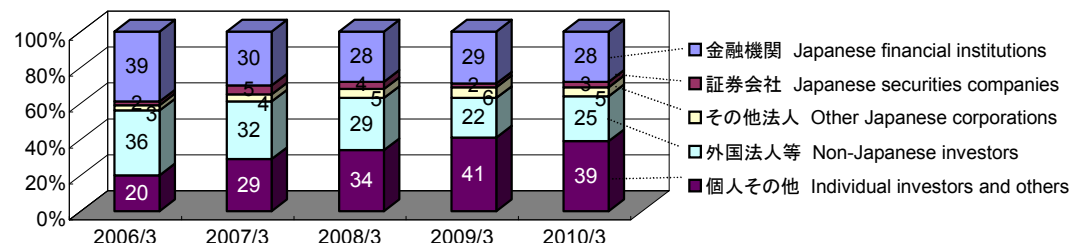
■株主数

Number of shareholders

63,208名

■株主構成


Distribution of shareholders



■主要株主

Principal shareholders

	持株比率 Percentage of shares held
日本トラスティ・サービス信託銀行株式会社(信託口) Japan Trustee Services Bank, Ltd. (Held in trust account)	5.28%
日本トラスティ・サービス信託銀行株式会社(信託口9) Japan Trustee Services Bank, Ltd. (Held in trust account 9)	4.51%
日本マスタートラスト信託銀行株式会社(信託口) The Master Trust Bank of Japan, Ltd. (Held in trust account)	3.93%
三井金属社員持株会 The Employees' Shareholding Association	1.51%
三井生命保険株式会社 Mitsui Life Insurance Company, Limited	1.39%
アイリスオーヤマ株式会社 IRISOHYAMA Inc.	1.27%
オーディ05 オムニバス チャイナ トリーティ 808150 SSBT OD05 OMNIBUS ACCOUNT CHINA TREATY CLIENTS	1.15%
ステート ストリート バンク ウェスト クライアント トリーティ State Street Bank West Client Treaty	1.13%
シティバンク ホンコン エス/エイ ファンド 115 Citibank Hong Kong S/A Fund 115	1.05%
日本トラスティ・サービス信託銀行株式会社(信託口4) Japan Trustee Services Bank, Ltd. (Held in trust account 4)	0.89%



お問合せ先

三井金属鉱業株式会社 経営企画部広報室

〒141-8584 東京都品川区大崎一丁目11番1号

電話 03-5437-8028 ファックス 03-5437-8029

電子メール PR@mitsui-kinzoku.co.jp

ホームページ <http://www.mitsui-kinzoku.co.jp/>

Contact :

**Investor & Public Relations
MITSUI MINING & SMELTING CO., LTD.**

1-11-1 Osaki, Shinagawa-ku, Tokyo 141-8584 Japan

Phone 81-3-5437-8028 Facsimile 81-3-5437-8029

E-mail PR@mitsui-kinzoku.co.jp

URL <http://www.mitsui-kinzoku.co.jp/>