

Financial Data Book

投資家の方のための
財務データ集

for Investors

2009年6月発行 (June 2009)

2009

三井金属鉱業株式会社
MITSUI MINING & SMELTING CO., LTD.

CODE : 5706

注 Notes

1. 本冊子記載の財務数値は日本の会計基準に基づいて作成された各決算期の監査済み有価証券報告書および英文アニュアルレポート等に基づいております。
なお、本冊子自体は監査法人等の監査を受けておりません。

Not audited but based on audited financial statements prepared in accordance with accounting principles that were generally accepted in Japan when original statements were prepared.

2. 該当する数値が原資料に記載されていない場合は N/A と表示しております。
N/A means that an appropriate figure was not available in original statements.
3. 単位未満の金額は原則として切り捨てで表示してあります。
Amounts less than a unit are principally rounded down.

世界有数の非鉄金属メーカーとして技術力を蓄積してきた三井金属は、いまや亜鉛のトップメーカーであるにとどまらず、その「マテリアルの知恵」を電子材料・自動車用機能部品・資源リサイクル等の様々な分野で開花させています。

特に電子材料分野の成長は著しく、プリント配線板用電解銅箔やIC実装用テープをはじめとする当社製品がパソコンや薄型テレビ・携帯電話など最新電子機器の性能向上に大きな役割を果たしています。

Mitsui Kinzoku is now one of the key suppliers of nonferrous metal derivatives which play a key role in high-tech industries. Its *electronics-related materials*, including copper foil (for printed wiring boards) and semiconductor packaging tapes, are indispensable for PCs, flat-panel TVs, mobile phones, and other cutting-edge electronics devices.

Since its establishment in 1950, Mitsui Kinzoku has been a leading supplier of such *nonferrous metals* as zinc and copper, and has been one of the world's largest zinc producers. To take full advantage of its expertise in material processing, Mitsui Kinzoku has diversified its profit sources to include *automotive parts production* and *recycling & environmental businesses*.

目次 Contents

	page	
事業内容	2	Business Areas
最近10年間の動き(連結)	4	Ten-year Review (Consolidated)
要約財務情報(連結)	6	Financial Summary (Consolidated)
連結貸借対照表	8	Consolidated Balance Sheets
連結損益計算書	10	Consolidated Statements of Income
連結キャッシュフロー計算書	12	Consolidated Statements of Cash Flows
事業別セグメント情報	14	Business Segment Information
設立以来の業績推移	16	Performance since Establishment
経営体制	17	Directors, Auditors and Executive Officers
主要事業所・関係会社	18	Major Plants and Offices
会社と株式の情報	20	Corporate Data and Shareholders

事業内容 Business Areas

事業区分 <i>Business segment</i>	主要製品・サービス (用途例)
鉱山・基礎素材 <i>Mining and Fundamental Materials</i>	  亜鉛・亜鉛合金 (メッキ鋼板、ダイカスト) 銅 (電線、伸銅品) 金・銀 (電子工業材料、感光材料) 地熱蒸気 (発電)
中間素材 <i>Intermediate Materials</i>	   電子材料 電解銅箔 (電子機器用プリント配線板) 半導体実装材料 (液晶駆動用IC等の連続実装) (TAB・COFテープ) 電池材料 (乾電池、ハイブリッド車向け電池) 薄膜材料 (液晶画面、磁気記憶装置) 金属機能粉 (電子部品、複写機トナー) レアメタル化合物 (電子部品、ガラス研磨、レンズ) セラミックス製品 (炉材、溶融金属濾過) パーライト (建築材料、湿式濾過) 伸銅品・亜鉛板 (電気部品、電極材、屋根材) 研削砥石 (機械研削) 希土類 単結晶 (検出器、レンズ)
組立加工 <i>Parts Manufacturing and Assembly</i>	 自動車用機能部品 (ドアロック、ドア電動開閉装置) ダイカスト製品 (自動車、産業機器、家電製品) 触媒 (排ガス浄化装置) 計測機器
環境・リサイクル <i>Environmental Engineering and Metals Recycling</i>	 鉛 (蓄電池、無機薬品) 酸化亜鉛・酸化鉛 (ガラス・ゴム等の添加物) パーライト (乾式濾過、土壌改良) 産業廃棄物処理 人工軽量骨材 (軽量コンクリート)
エンジニアリング サービス等 <i>Engineering / Services</i>	エンジニアリング (各種設備の設計・施工) 非鉄金属・電子材料等の販売 情報処理システム

Major products and services

(Applications)

Zinc metal & alloy	(galvanized steel, die-casting)
Copper metal	(electric wire, rolled copper and brass)
Gold & silver	(electronics, photosensitives)
Geothermal steam	(power generation)

2009年3月期実績

Results for fiscal year ended March 2009

(十億円 billion yen)

Electronics materials

Electrodeposited copper foil	(printed wiring boards)
TAB & COF tapes	(tape automated bonding of LCD driver ICs)
Battery materials	(dry batteries, hybrid powered vehicles)
Sputtering targets	(flat panel displays, magnetic data storage)
Engineered metal powders	(electronics, toner for copiers)
Rare metal compounds	(electronics, glass polishing, optical lenses)

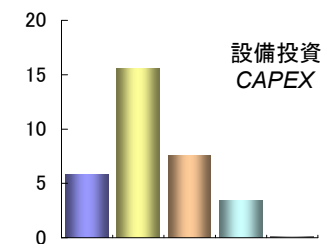
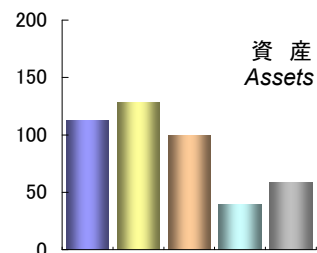
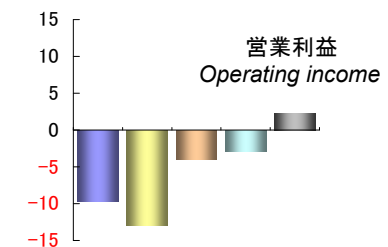
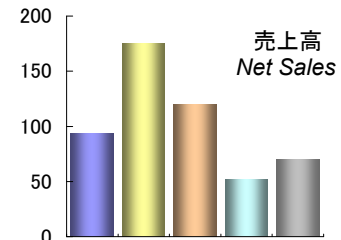
Specialty ceramics	(furnace refractory, melted metal filtration)
Perlite	(construction, liquid filtration)
Rolled copper & zinc	(electric parts, electrodes, roofs of buildings)
Grinding wheels	(mechanical grinding)
Rare earths	
Single crystals	(scintillators, optical lenses)

Automotive components	(door latches, power slide door systems)
Die-casting products	(automobiles, machines, home electronics)
Catalysts	(exhaust gas detoxifiers)
Instrumentation systems	

Lead metal	(car batteries, inorganic chemicals)
Zinc & lead oxide	(glass, rubber)
Perlite	(air filtration, soil improvement)
Industrial waste treatment	
Artificial light-weight aggregate	(light-weight concrete)

Engineering

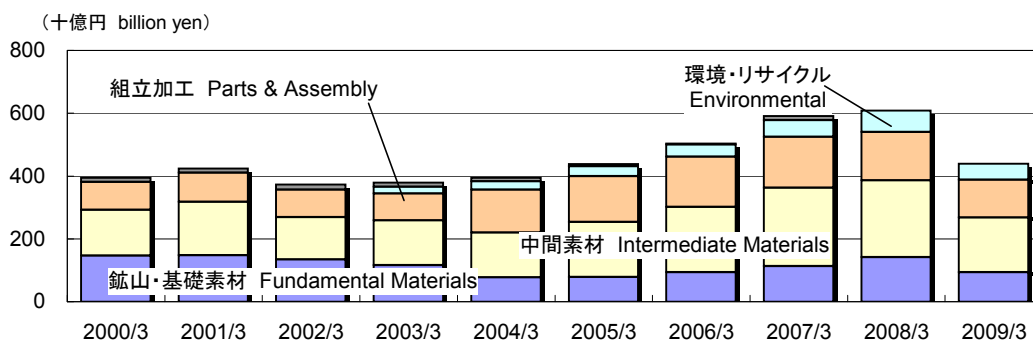
Trading
Information system



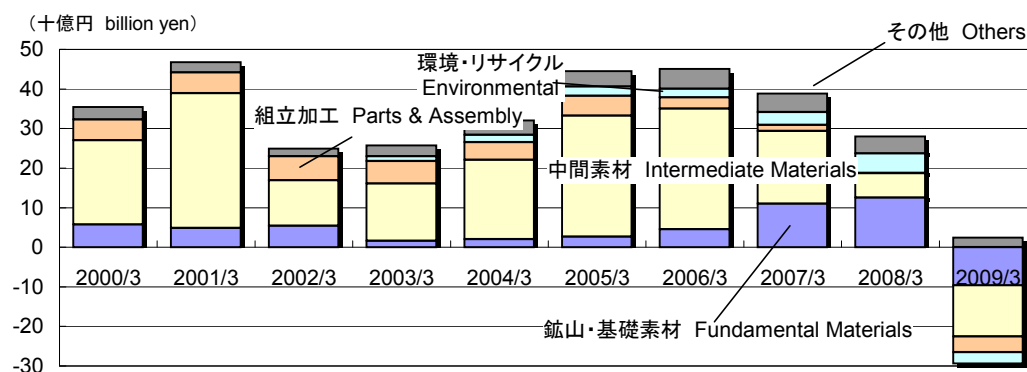
鉱山・基礎素材
 Fundamental Materials
 中間素材
 Intermediate Materials
 組立加工
 Parts & Assembly
 環境・リサイクル
 Environmental
 エンジニアリング・サービス
 Engineering & Services

最近10年間の動き（連結） Ten-year Review (Consolidated)

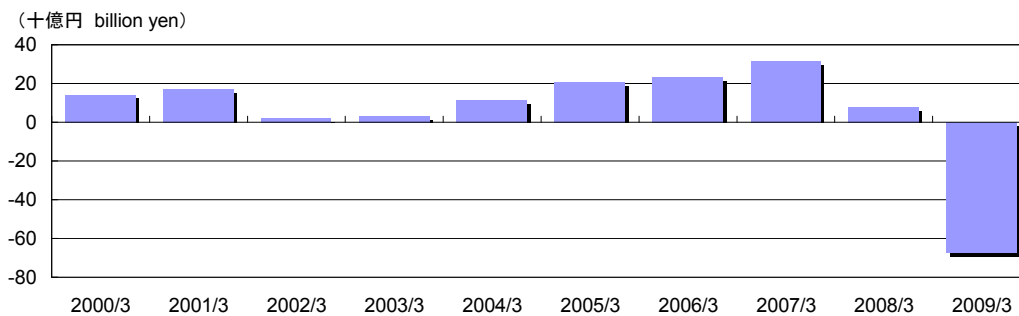
■売上高 Net sales



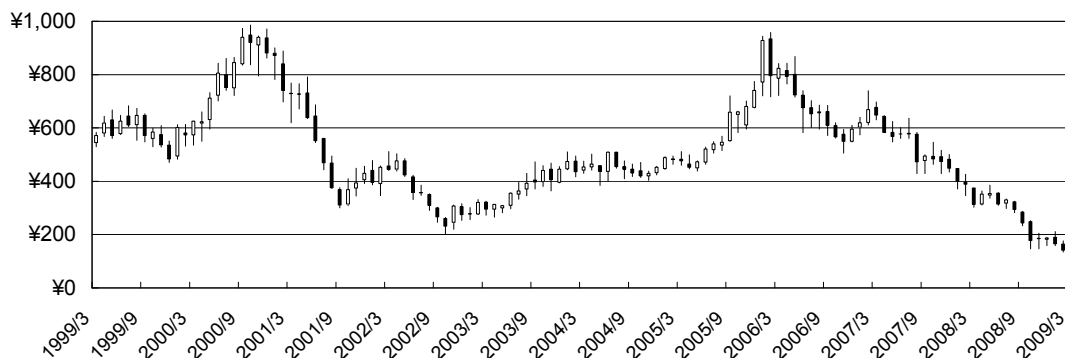
■営業利益 Operating income



■当期純利益 Net income

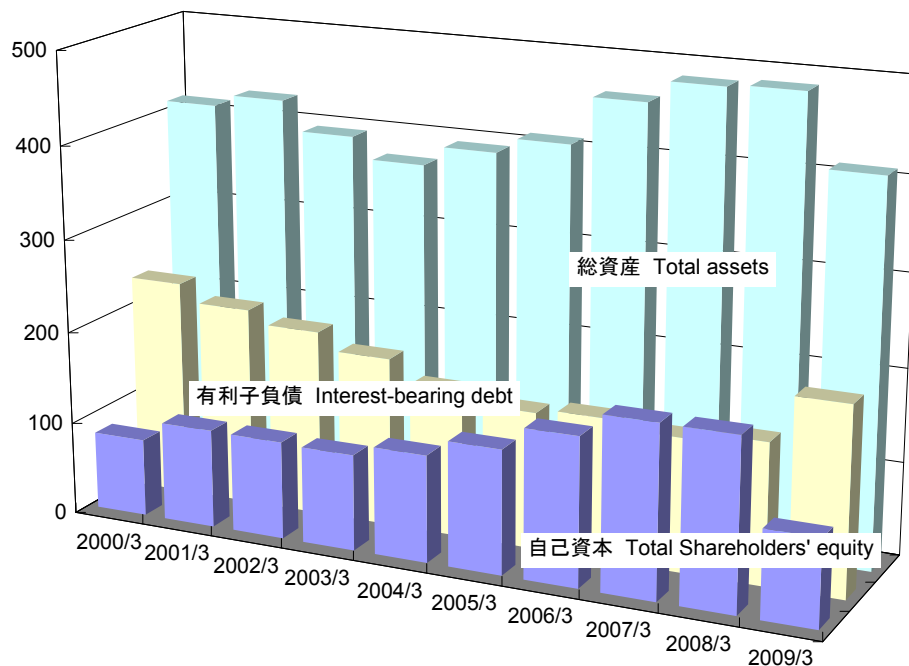


■株価 Stock price per share



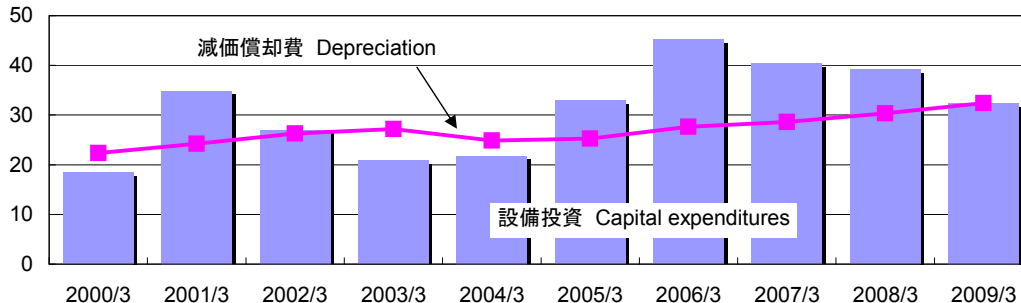
■ 財政状態 *Financial position*

(十億円 billion yen)



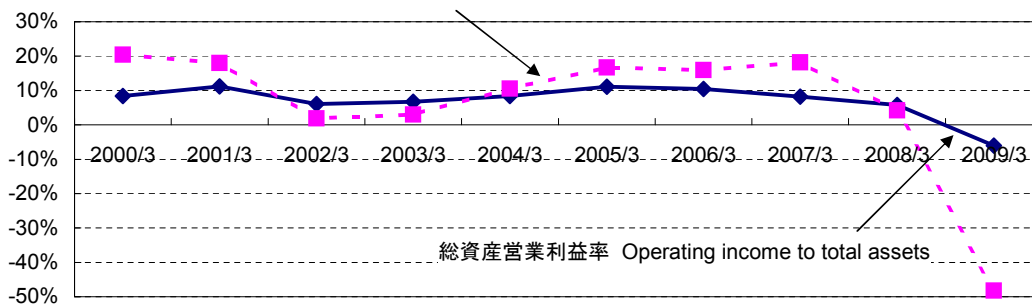
■ 設備投資・減価償却 *Capital expenditures and depreciation*

(十億円 billion yen)



■ 資本効率 *ROA and ROE*

自己資本当期純利益率 Net income to total shareholders' equity



要約財務情報（連結） Financial Summary (Consolidated)

(百万円 Millions of yen)

決算期 for fiscal years ended

2009/3 2008/3 2007/3 2006/3

売上高・損益		Sales and profit/loss			
売上高	Net sales	427,191	595,463	591,518	503,370
営業利益	Operating income	(27,031)	27,993	38,865	45,052
経常利益	Recurring income	(30,310)	41,780	56,585	50,487
当期純利益	Net income	(67,256)	7,830	31,370	23,374
EBITDA	Earnings before interest, taxes, depreciation and amortization	(19,801)	53,069	77,446	65,738
財政状況(期末)		Financial position at fiscal year-end			
総資産	Total assets	410,258	486,238	483,397	460,225
自己資本	Total shareholders' equity	94,145	184,995	185,513	159,772
有利子負債残高	Interest-bearing debt	202,468	151,924	143,220	151,834
D/E レシオ	D/E ratio	2.15	0.82	0.77	0.95
自己資本比率	Shareholders' equity ratio	22.9%	38.0%	38.4%	34.7%
発行済株式総数(千株)	Shares issued (thousand shares)	572,966	572,966	572,966	572,966
自己株式を除く発行済株式数	Outstanding shares excluding treasury stock	571,523	572,683	572,713	572,748
1株当たり情報		Per share data			
1株当たり純資産	Total shareholders' equity	¥164.7	¥323.0	¥323.9	¥278.6
1株当たり当期純利益	Net income	(¥117.6)	¥13.6	¥54.7	¥40.5
潜在株式調整後 1株当たり当期純利益	Net income [diluted]	(¥117.6)	¥13.6	¥54.7	¥40.5
1株当たり配当額	Cash dividends applicable to the year	-	¥12.0	¥12.0	¥10.0
収益性比率		Profitability ratios			
売上高営業利益率	Operating income to net sales	(6.3%)	4.7%	6.6%	9.0%
総資産営業利益率	Operating income to *total assets	(6.0%)	5.8%	8.2%	10.4%
総資産当期純利益率	Net income to *total assets	(15.0%)	1.6%	6.6%	5.4%
株主資本当期純利益率	Net income to *total shareholders' equity	(48.2%)	4.2%	18.2%	15.9%
* Average of beginning and end of fiscal year					
キャッシュフロー		Cash flows			
営業活動によるキャッシュフロー	Net cash from operating activities	30,038	41,657	34,077	44,800
投資活動によるキャッシュフロー	Net cash from investing activities	(36,922)	(38,049)	(30,021)	(43,039)
減価償却費(連結調整勘定を含む)	Depreciation and amortization	32,281	27,361	25,617	24,686
資本的支出	Capital expenditures	32,424	39,248	40,309	45,176
その他		Others			
研究開発費(調査探鉱費を含む)	Research and development expenses	8,232	8,616	7,359	6,351
期末従業員数(人)	Number of employees	11,189	11,369	10,403	9,965

金属価格及び外国為替相場(期中平均) Metal prices and foreign exchange rates (average of fiscal year)

ロンドン金属取引所 亜鉛	LME Zinc (SHG)	(\$/t)	1,560	2,986	3,579	1,613
同上 銅	LME Copper (AG)	(\$/t)	5,864	7,584	6,970	4,097
		(c/lb)	266.0	344.0	316.2	185.8
日本円対米ドル相場(TTM)	JPY rate per US dollar		¥100.7	¥114.3	¥117.0	¥113.3
同上 期末相場	JPY rate at fiscal year-end		¥98.2	¥100.2	¥118.1	¥117.5

株価 Stock price per share

期中最高株価	Highest price of fiscal year	¥385	¥646	¥868	¥958
期中最低株価	Lowest price of fiscal year	¥122	¥303	¥506	¥438
年度末株価	Price at fiscal year-end	¥162	¥312	¥647	¥824

要約財務情報（連結） Financial Summary (Consolidated)

2005/3	2004/3	2003/3	2002/3	2001/3	2000/3	備考 Notes
※（ ）内の数字は負数を表しております						
438,143	393,928	378,608	373,442	423,707	394,722	
44,515	32,035	25,740	24,893	46,752	35,474	
45,433	29,702	21,226	18,760	38,113	27,847	
20,780	11,452	3,085	1,986	17,012	14,181	
64,425	42,034	46,189	46,577	65,720	55,041	
409,019	392,545	370,886	393,603	424,829	412,103	
133,963	115,398	103,237	105,219	105,936	83,489	⇒ 07/3期より純資産合計一少数株主持分としております
147,125	158,342	182,530	201,136	214,923	233,810	Total net assets - Minority interests from FY 07/3
1.10	1.37	1.77	1.91	2.03	2.80	
32.8%	29.4%	27.8%	26.7%	24.9%	20.3%	
572,966	572,966	559,305	559,305	559,305	539,532	
572,788	572,847	559,220	559,296	559,303	539,532	
¥233.6	¥201.3	¥184.4	¥188.1	¥189.4	¥154.7	
¥36.0	¥19.8	¥5.3	¥3.5	¥30.8	¥26.8	
¥36.0	¥18.9	¥5.2	¥3.4	¥29.0	¥24.6	
¥7.0	¥5.0	¥5.0	¥5.0	¥6.0	¥6.0	
10.2%	8.1%	6.8%	6.7%	11.0%	9.0%	
11.1%	8.4%	6.7%	6.1%	11.2%	8.4%	
5.2%	3.0%	0.8%	0.5%	4.1%	3.4%	
16.7%	10.5%	3.0%	1.9%	18.0%	20.4%	
44,016	49,787	40,707	28,587	48,745	36,440	
(25,792)	(14,716)	(21,988)	(18,319)	(34,699)	(1,583)	
22,345	21,954	29,636	27,111	24,888	22,875	
32,913	21,773	20,794	26,969	34,844	18,463	
6,502	4,975	4,414	3,208	3,742	3,406	
9,701	9,397	8,339	8,619	9,542	9,379	
1,109	899	777	830	1,101	1,111	
3,000	2,046	1,586	1,527	1,806	1,670	
136.1	92.8	72.0	69.3	81.9	75.7	
¥107.6	¥113.1	¥122.0	¥125.1	¥110.6	¥111.6	
¥107.3	¥105.7	¥120.2	¥133.3	¥123.9	¥106.2	
¥512	¥510	¥503	¥791	¥986	¥683	
¥384	¥265	¥200	¥300	¥550	¥470	
¥475	¥454	¥294	¥443	¥728	¥626	

連結貸借対照表 Consolidated Balance Sheets

(百万円 Millions of yen)

決算期 as of the ends of

2009/3 2008/3 2007/3 2006/3

資産の部	Assets	2009/3	2008/3	2007/3	2006/3
I 流動資産	I Current assets	181,415	227,923	218,436	208,754
現金及び預金	Cash and time deposits	52,915	20,645	17,306	16,944
受取手形及び売掛金	Notes and accounts receivable	47,534	98,149	92,828	83,496
有価証券	Marketable securities	-	-	-	-
たな卸資産	Inventories	63,976	92,719	88,560	79,165
繰延税金資産	Deferred tax assets	1,138	3,755	6,486	5,677
その他	Others	16,351	13,293	13,904	23,995
貸倒引当金	Allowance for doubtful accounts	(500)	(640)	(649)	(525)
II 固定資産	II Fixed assets	228,842	258,315	264,960	251,471
(1)有形固定資産	(1) Property, plant and equipment	169,299	184,168	195,604	203,906
建物及び構築物	Buildings and structures, net	54,223	61,130	68,078	65,880
機械装置及び運搬具	Machinery and equipment, net	66,488	73,415	74,687	82,044
土地	Land, net	34,280	34,348	34,773	38,190
リース資産	Lease assets	3,575	-	-	-
建設仮勘定	Construction in progress	5,716	6,604	9,295	8,843
その他	Others, net	5,015	8,669	8,769	8,947
(2)無形固定資産	(2) Intangible fixed assets	3,605	3,014	2,222	2,194
(3)投資その他の資産	(3) Investments and long-term receivables	55,936	71,132	67,133	45,370
投資有価証券	Investment securities	42,852	55,653	51,781	32,425
長期貸付金	Long-term loans receivable	779	914	954	4,775
繰延税金資産	Deferred tax assets	7,236	8,490	8,046	5,762
その他	Others	5,696	6,262	6,592	6,291
貸倒引当金	Allowance for doubtful accounts	(628)	(188)	(241)	(3,883)
為替換算調整勘定	Foreign currency translation adjustments	-	-	-	-
資産合計	Total assets	410,258	486,238	483,397	460,225
負債の部	Liabilities				
I 流動負債	I Current liabilities	152,542	154,782	160,847	162,170
支払手形及び買掛金	Notes and accounts payable	26,630	52,436	48,064	46,896
短期借入金	Short-term bank loans	61,325	52,172	58,843	63,623
コマーシャルペーパー	Commercial paper	20,000	-	-	-
社債(一年以内償還)	Current portion of bonds	10,000	10,000	1,000	-
転換社債(一年以内償還)	Current portion of convertible bonds	-	-	-	-
リース債務	Lease obligations	1,159	-	-	-
未払法人税等	Accrued income taxes	1,032	4,652	8,106	9,221
賞与引当金	Accrued bonuses	4,374	5,713	6,067	5,567
その他	Others	28,020	29,807	38,766	36,861
II 固定負債	II Long-term liabilities	153,084	131,911	124,658	126,558
社債	Bonds	40,000	40,000	40,000	31,000
転換社債	Convertible bonds	-	-	-	-
長期借入金	Long-term loans	71,142	49,750	43,376	57,210
リース債務	Lease obligations	2,357	-	-	-
繰延税金負債	Deferred tax liabilities	4,362	1,777	1,895	1,326
退職給付(給与)引当金	Allowance for employees' retirement benefits	28,655	33,382	30,151	28,405
環境対策引当金	Allowance for environmental remediation	2,577	2,559	3,074	-
負ののれん/連結調整勘定	Consolidation differences	122	245	3,217	6,209
その他	Others	3,865	4,194	2,942	2,406
負債合計	Total liabilities	305,626	286,693	285,506	288,729
純資産の部	Net assets				
I 資本金	I Common stock	42,129	42,129	42,129	42,129
II 資本剰余金	II Capital surplus	22,557	22,557	22,557	22,557
III 利益剰余金	III Retained earnings	43,659	117,548	117,181	91,275
IV 自己株式	IV Treasury stock	(503)	(131)	(116)	(93)
V その他有価証券評価差額金	V Net unrealized gains on securities	842	2,743	5,081	5,914
VI 繰延ヘッジ損益	VI Loss on deferred hedge	(4,370)	2,354	(1,160)	-
VII 為替換算調整勘定	VII Foreign currency translation adjustments	(10,169)	(2,206)	(160)	(2,011)
自己資本(旧基準:資本合計)	Total shareholders' equity	94,145	184,995	185,513	159,772
少数株主持分	Minority interests	10,485	14,550	12,377	11,724
純資産合計	Total net assets	104,631	199,545	197,890	171,496
負債、純資産合計	Total liabilities and net assets	410,258	486,238	483,397	460,225

連結貸借対照表 Consolidated Balance Sheets

2005/3	2004/3	2003/3	2002/3	2001/3	2000/3	備考 Notes
						※ ()内の数字は負数を表しております
172,912	156,658	147,729	155,238	180,557	176,602	
16,143	12,276	10,356	11,178	16,647	17,635	
76,447	74,122	62,328	69,405	89,711	90,134	
-	31	-	52	84	552	
64,141	49,470	62,591	63,489	60,565	57,264	
5,467	5,197	2,975	2,890	2,364	2,928	
11,191	16,040	10,271	9,143	11,845	9,434	
(478)	(480)	(793)	(921)	(663)	(1,348)	
236,107	235,887	223,157	238,365	244,271	226,623	
196,298	194,863	188,580	199,364	201,329	185,062	
63,483	67,800	69,760	72,875	74,696	73,084	
73,709	68,898	74,014	80,847	77,874	66,631	
43,148	43,401	36,098	36,381	36,036	36,110	
-	-	-	-	-	-	
7,947	6,716	2,448	2,906	5,840	2,899	
8,009	8,045	6,257	6,353	6,881	6,336	
2,238	2,431	2,062	4,827	5,694	2,584	
37,569	38,592	32,514	34,172	37,247	38,976	
24,404	24,060	17,893	21,162	24,556	22,629	
3,945	3,661	3,500	3,686	4,126	7,681	
7,507	8,765	9,285	7,836	6,143	5,149	
4,921	5,050	4,912	4,777	5,649	7,717	
(3,208)	(2,945)	(3,076)	(3,290)	(3,228)	(4,200)	
-	-	-	-	-	8,878	⇒ 01/3期以降は資本の部に計上しております Included in the shareholders' equity section from FY 01/3
409,019	392,545	370,886	393,603	424,829	412,103	
139,369	147,791	161,405	167,004	184,771	177,335	
36,580	36,402	25,933	27,069	36,588	36,473	
62,235	78,903	90,063	102,832	108,726	109,348	⇒ 長期借入金の一年内返済分を含んでおります Including current portion of long-term loans
-	-	5,000	3,000	2,000	-	
50	-	-	5,000	-	-	
-	-	13,371	-	-	-	
-	-	-	-	-	-	
11,200	3,231	3,533	3,604	8,952	6,361	
5,347	5,129	4,788	4,997	5,876	5,749	
23,956	24,124	18,716	20,499	22,627	19,404	
125,022	118,947	95,547	110,820	124,107	140,119	
21,000	11,050	50	-	5,350	5,350	
-	-	-	13,371	13,371	24,424	
63,840	68,388	74,045	76,932	85,475	94,687	
-	-	-	-	-	-	
1,033	1,124	969	2,000	1,362	1,465	
27,688	23,610	17,329	14,767	13,886	9,048	⇒ 01/3期から会計方針を変更しております
-	-	-	-	-	-	
8,974	11,573	118	-	-	-	
2,486	3,200	3,035	3,749	4,662	5,144	
264,392	266,739	256,953	277,824	308,879	317,455	
						⇒ 07/3期より表示が変更となりました
42,129	42,129	42,129	42,129	42,129	36,602	
22,557	22,557	18,570	18,570	18,570	13,044	
72,051	54,302	45,816	45,975	47,481	33,842	
(68)	(41)	(26)	(4)	(1)	(0)	
2,662	2,593	331	415	1,727	-	
-	-	-	-	-	-	
(5,369)	(6,143)	(3,584)	(1,867)	(3,970)	-	
133,963	115,398	103,237	105,219	105,936	83,489	⇒ 指標の連続性のため、旧基準にて表示しております
10,662	10,407	10,695	10,559	10,013	11,159	
144,626	125,805	113,932	115,778	115,949	94,648	
409,019	392,545	370,886	393,603	424,829	412,103	

連結損益計算書 Consolidated Statements of Income

(百万円 Millions of yen)		決算期 for fiscal years ended	2009/3	2008/3	2007/3	2006/3
I	売上高	Net Sales	427,191	595,463	591,518	503,370
II	売上原価	Cost of sales	405,253	510,085	500,734	412,003
	売上総利益	Gross profit	21,937	85,378	90,784	91,366
III	販売費及び一般管理費	Selling, general and administrative expenses	48,969	57,384	51,918	46,314
	営業利益	Operating income	(27,031)	27,993	38,865	45,052
IV	営業外収益	Other income	2,316	19,143	24,028	10,409
	受取利息及び受取配当金	Interest and dividend income	2,050	1,961	2,916	648
	為替差益	Foreign exchange gain	-	-	-	-
	負ののれん/連結調整勘定償却額	Amortization of consolidation differences	109	2,971	2,991	2,963
	持分法による投資利益	Equity in earnings of unconsolidated subsidiaries and affiliates	(1,277)	11,601	14,445	4,468
	その他雑収益	Others	1,434	2,609	3,675	2,329
V	営業外費用	Other expenses	5,595	5,357	6,308	4,974
	支払利息	Interest expense	3,032	3,053	2,696	2,416
	有価証券評価損	Write-down of marketable securities	-	-	-	-
	為替差損	Foreign exchange loss	936	-	-	-
	たな卸資産評価損	Write-down of inventories	-	-	-	-
	その他雑費用	Others	1,625	2,303	3,611	2,558
	経常利益	Recurring income	(30,310)	41,780	56,585	50,487
VI	特別利益	Extraordinary income	689	4,689	12,045	1,231
	固定資産売却益	Gain on sale of property, plant and equipment	457	307	221	162
	投資有価証券売却益	Gain on sale of investment securities	-	274	141	898
	連結子会社株式売却益	Gain on sale of shares in consolidated subsidiaries	-	-	-	-
	事業譲渡益	Gain on transfer of business	-	-	11,519	-
	鉱業権売却益	Gain on sale of mining rights	-	3,660	-	-
	過年度未実現利益修正額	Prior years' adjustments	-	-	-	-
	その他特別利益	Others	232	446	163	169
VII	特別損失	Extraordinary expenses	25,493	23,814	19,497	13,081
	賠償金及び補償金	Indemnity	154	150	320	644
	貸倒損失及び貸倒引当金繰入	Write-off and provision for doubtful accounts	-	-	-	-
	退職給付	Amortization of net transition obligation	-	-	-	-
	会計基準移行時差異償却	for retirement benefits	-	-	-	-
	投資有価証券評価損	Write-down of investment securities	1,119	17	237	626
	固定資産除却損	Loss on disposal of property, plant and equipment	1,028	1,814	3,396	1,659
	固定資産売却損	Loss on sale of property, plant and equipment	65	206	436	234
	減損損失・固定資産評価損	Loss on impairment of fixed assets	11,831	18,514	1,334	7,791
	連結調整勘定一括償却	Write-down of goodwill	-	-	-	-
	たな卸資産売却損	Loss on sale of inventories	-	-	-	-
	たな卸資産評価損	Write-down of inventories	4,728	-	-	-
	関係会社整理損	Loss from liquidation of subsidiaries	-	-	6,527	649
	無償修理等負担金	Cost of warranty and other free repairs	-	-	-	-
	退職給与引当金繰入及び退職給与加算金等	Additional retirement benefits and provision for retirement benefits	-	-	-	-
	連結子会社株式売却損	Loss on sale of securities of consolidated subsidiaries	-	-	63	-
	環境対策費用	Loss from environmental remediation	-	-	3,511	-
	その他特別損失	Others	6,565	3,110	3,669	1,476
	税金等調整前 当期純利益	Income before income taxes and minority interests	(55,114)	22,655	49,133	38,636
	法人税、住民税及び事業税	Income taxes - current	4,853	10,114	14,753	13,397
	法人税等調整額	Income taxes - deferred	7,528	1,927	(183)	(227)
	少数株主利益	Minority interests	(240)	2,783	3,193	2,092
	当期純利益	Net income	(67,256)	7,830	31,370	23,374

連結損益計算書 Consolidated Statements of Income

2005/3	2004/3	2003/3	2002/3	2001/3	2000/3	備考 Notes
438,143	393,928	378,608	373,442	423,707	394,722	※ ()内の数字は負数を表しております
350,565	319,725	313,416	310,474	333,140	318,654	
87,578	74,202	65,192	62,968	90,566	76,068	
43,062	42,167	39,451	38,075	43,813	40,593	
44,515	32,035	25,740	24,893	46,752	35,474	
6,625	5,758	2,192	1,884	2,752	2,776	
592	481	444	614	627	505	
-	-	564	-	-	-	
2,896	2,892	-	-	-	-	
2,501	933	-	-	1,048	707	
635	1,450	1,184	1,270	1,076	1,563	
5,708	8,091	6,706	8,017	11,391	10,403	
2,360	2,945	3,443	4,616	5,812	6,482	
-	-	-	-	-	325	
897	264	-	444	2,255	-	
-	1,063	-	-	-	-	
2,449	3,818	3,263	2,956	3,324	3,596	
45,433	29,702	21,226	18,760	38,113	27,847	
1,462	2,249	1,289	4,206	3,289	9,136	
949	397	330	1,474	2,351	4,938	
325	844	312	33	127	813	
-	647	-	2,091	-	310	
-	-	-	-	-	-	
-	-	-	-	-	2,485	
188	358	647	606	810	588	
10,981	18,621	13,208	12,177	10,758	11,299	
531	554	750	1,379	1,005	1,069	
-	-	-	720	669	4,515	
3,806	3,806	3,803	4,061	4,376	-	
253	827	2,556	1,218	1,268	-	
2,789	2,579	1,856	1,492	1,344	935	
1,575	212	66	57	929	2,513	
-	1,152	1,315	-	-	-	
-	-	1,712	-	-	-	
-	3,158	-	-	-	-	
-	-	-	-	-	-	
-	1,997	-	-	-	-	
-	3,438	-	-	-	-	
-	-	-	1,626	-	-	
-	-	-	-	-	-	
2,025	894	1,146	1,618	1,163	2,265	
35,914	13,329	9,307	10,789	30,644	25,684	
13,323	5,055	7,791	9,466	14,856	10,770	
815	(3,324)	(2,058)	(1,231)	(2,430)	(174)	
995	145	489	568	1,207	906	
20,780	11,452	3,085	1,986	17,012	14,181	

連結キャッシュフロー計算書 Consolidated Statements of Cash Flows

(百万円 Millions of yen)

決算期 for fiscal years ended

2009/3

2008/3

2007/3

2006/3

		2009/3	2008/3	2007/3	2006/3
I 営業活動によるキャッシュフロー	Cash flows from operating activities				
税金等調整前当期純利益	Income before income taxes and minority interests	---	(55,114)	22,655	49,133
減価償却費(連結調整勘定を含む)	Depreciation and amortization	---	32,281	27,361	25,617
減損損失・固定資産評価損	Loss on impairment of fixed assets	---	11,831	18,514	1,334
退職給付	Amortization of net transition obligation	---	-	-	-
会計基準移行時差異償却	for retirement benefits	---	-	-	-
事業譲渡益	Gain on transfer of business	---	-	-	(11,519)
鉱業権売却益	Gain on sale of mining rights	---	-	(3,660)	-
環境対策費用引当金繰入	Loss on provision for environmental remediation	---	977	156	3,074
為替差損益	Foreign exchange loss(gain)	---	99	59	(159)
持分法による投資損益	Equity in loss(earnings) of unconsolidated subsidiaries and affiliates	---	1,277	(11,601)	(14,445)
支払利息	Interest expense	---	3,032	3,053	2,696
売上債権の増減額	Decrease(increase) in notes and accounts receivable	---	46,114	(6,210)	(11,221)
たな卸資産の増減額	Decrease(increase) in inventories	---	25,384	(4,479)	(13,508)
仕入債務の増減額	Increase(decrease) in notes and accounts payable	---	(22,706)	1,128	2,460
その他	Others	---	(7,394)	4,833	12,137
小計	Subtotal		35,784	51,811	45,600
利息及び配当金の受取額	Interest and dividends received	---	5,504	6,477	7,143
利息の支払額	Interest paid	---	(2,900)	(2,946)	(2,712)
保証債務の履行による支払額	Payment for execution of a guarantee	---	-	-	-
賠償金及び補償金の支払額	Indemnity paid	---	(154)	(150)	(320)
事業撤退費用の支払額	Payment for dissolution of discontinued business	---	-	-	-
合理化退職金の支出	Payment for retirement benefit for rationalization	---	-	-	-
法人税等の支払額	Income taxes paid	---	(8,191)	(13,533)	(15,634)
その他	Others	---	(3)	-	-
営業活動によるキャッシュフロー	Net cash provided by operating activities		30,038	41,657	34,077
II 投資活動によるキャッシュフロー	Cash flows from investing activities				
有価証券の取得による支出	Purchase of securities	---	(2,389)	(1,760)	(13,717)
有価証券の売却による収入	Sale of securities	---	102	372	242
連結子会社株式の売却による収入(支出)	Sale of shares in consolidated subsidiaries	---	-	-	231
連結の範囲の変更を伴う子会社株式の取得による支出	Disbursements for acquisition of newly consolidated subsidiaries	---	-	-	-
株式の交換による子会社資金の受入額	Net of cash acquired through stock exchange	---	-	-	-
有形固定資産の取得による支出	Acquisition of property, plant and equipment	---	(33,821)	(39,510)	(38,900)
有形固定資産の売却による収入	Sale of property, plant and equipment	---	449	1,640	2,046
鉱業権売却による収入	Proceeds from sale of mining rights	---	502	3,936	-
長期貸付金の貸付による支出	Disbursement for long-term loans receivable	---	(9)	(462)	(863)
長期貸付金の回収による収入	Collection of long-term loans receivable	---	143	159	167
事業譲渡による収入	Proceeds from transfer of business	---	-	-	22,337
その他	Others	---	(1,900)	(2,425)	(1,565)
投資活動によるキャッシュフロー	Net cash used in investing activities		(36,922)	(38,049)	(30,021)
III 財務活動によるキャッシュフロー	Cash flows from financing activities				
短期借入金の増減額	Net increase(decrease) in short-term bank loans	---	10,340	4,751	(6,915)
商業紙の増減額	Net increase(decrease) in commercial paper	---	20,000	-	-
長期借入による収入	Proceeds from long-term debt	---	32,594	17,414	16,393
長期借入金の返済による支出	Repayment of long-term debt	---	(10,301)	(23,543)	(17,569)
社債及び転換社債の発行による収入	Issuance of bonds and convertible bonds	---	10,000	10,000	10,000
社債及び転換社債の償還による支出	Redemption of bonds and convertible bonds	---	(10,000)	(1,000)	-
配当金の支払額	Payment for cash dividends to shareholders	---	(6,872)	(6,872)	(5,727)
少数株主への配当金支払額	Payment for cash dividends to minority interests	---	(1,324)	(1,344)	(838)
その他	Others	---	(2,068)	(150)	(87)
財務活動によるキャッシュフロー	Net cash used in financing activities		42,367	(744)	(4,744)
IV 現金及び現金同等物に係る換算差額	Effect of exchange rate changes on cash and cash equivalents		(3,213)	149	529
V 現金及び現金同等物の増減額	Net increase(decrease) in cash and cash equivalents		32,270	3,012	(159)
VI 現金及び現金同等物の期首残高	Cash and cash equivalents at beginning of year		20,645	17,304	16,944
VII 新規連結子会社の現金及び現金同等物の期首残高	Effect of additions of consolidated subsidiaries		-	328	520
VIII 現金及び現金同等物の期末残高	Cash and cash equivalents at end of year		52,915	20,645	17,304

連結キャッシュフロー計算書 Consolidated Statements of Cash Flows

2005/3	2004/3	2003/3	2002/3	2001/3	2000/3	備考 Notes
※ ()内の数字は負数を表しております						
35,914	13,329	9,307	10,789	30,644	25,684	
22,345	21,954	29,636	27,111	24,888	22,875	
-	1,152	1,315	-	-	-	
3,806	3,806	3,803	4,061	4,376	-	
-	-	-	-	-	-	
-	-	-	-	-	-	
-	-	-	-	-	-	
(144)	155	(325)	465	2,571	(651)	
(2,501)	(933)	77	31	(1,048)	(707)	
2,360	2,945	3,443	4,616	5,812	6,482	
(2,284)	(3,987)	6,898	17,191	3,471	(5,470)	
(14,376)	15,337	640	(4,176)	(2,095)	3,068	
19	3,956	(1,452)	(9,493)	(1,065)	5,071	
5,748	320	(1,041)	(566)	226	(649)	
50,887	58,036	52,303	50,030	67,781	55,703	
1,251	597	553	666	686	587	
(2,517)	(2,923)	(3,489)	(4,776)	(5,814)	(6,490)	
-	-	-	-	-	(2,779)	
(531)	(554)	(750)	(1,379)	(1,005)	(1,094)	
-	-	-	-	(457)	(262)	
-	-	-	(1,221)	-	-	
(5,074)	(5,368)	(7,910)	(14,731)	(12,444)	(9,223)	
-	-	-	-	-	-	
44,016	49,787	40,707	28,587	48,745	36,440	
(236)	(2,240)	(2,710)	(657)	(1,632)	(1,958)	
461	3,011	1,139	560	358	2,640	
-	885	(43)	5,333	-	747	
-	-	-	-	(6,213)	(192)	
-	3,166	-	-	-	-	
(32,528)	(21,263)	(20,344)	(26,604)	(34,182)	(18,101)	
6,495	1,261	1,285	2,779	3,894	14,771	
-	-	-	-	-	-	
(129)	(207)	(25)	(122)	(332)	(908)	
107	106	138	295	3,051	1,277	
-	-	-	-	-	-	
37	564	(1,427)	96	357	142	
(25,792)	(14,716)	(21,988)	(18,319)	(34,699)	(1,583)	
(14,492)	(10,950)	(12,566)	(2,347)	12,364	(23,809)	
-	(5,000)	2,000	1,000	2,000	-	
13,207	20,818	21,808	19,067	23,786	26,306	
(20,289)	(31,486)	(23,484)	(29,996)	(49,803)	(46,932)	
10,000	10,000	-	-	-	10,000	
-	(13,371)	(5,000)	-	-	-	
(2,864)	(2,870)	(2,796)	(3,355)	(3,237)	(2,544)	
(403)	(125)	(132)	(248)	(339)	(333)	
(105)	(3)	18	33	5	993	
(14,947)	(32,989)	(20,152)	(15,846)	(15,224)	(36,320)	
115	(119)	(250)	117	(19)	(336)	
3,391	1,962	(1,684)	(5,461)	(1,197)	(1,800)	
12,274	10,312	11,230	16,692	17,663	19,463	
476	-	766	-	227	-	
16,143	12,274	10,312	11,230	16,692	17,663	

事業別セグメント情報 Business Segment Information

(百万円 Millions of yen)		決算期 for fiscal years ended			
		2009/3	2008/3	2007/3	2006/3
売上高	Sales (including intergroup sales)				
鉱山・基礎素材	Mining & Fundamental Materials	93,532	142,120	113,564	93,750
中間素材	Intermediate Materials	174,847	243,772	249,287	208,347
組立加工	Parts Manufacturing and Assembly	119,535	153,821	161,756	159,311
環境・リサイクル	Environmental Engineering & Metals Recycling	51,323	69,092	53,350	38,843
エンジニアリング・サービス等	Engineering & Services	70,329	88,274	108,043	87,338
消去または全社	Elimination	(82,377)	(101,618)	(94,485)	(84,221)
連結	Consolidated	427,191	595,463	591,518	503,370
営業利益	Operating income				
鉱山・基礎素材	Mining & Fundamental Materials	(9,619)	12,582	10,998	4,549
中間素材	Intermediate Materials	(12,906)	6,090	18,336	30,470
組立加工	Parts Manufacturing and Assembly	(4,019)	73	1,585	2,883
環境・リサイクル	Environmental Engineering & Metals Recycling	(2,910)	4,939	3,202	2,170
エンジニアリング・サービス等	Engineering & Services	2,204	3,232	4,533	4,429
消去または全社	Elimination	219	1,073	209	547
連結	Consolidated	(27,031)	27,993	38,865	45,052
売上高営業利益率	Operating income to net sales				
鉱山・基礎素材	Mining & Fundamental Materials	(10.3%)	8.9%	9.7%	4.9%
中間素材	Intermediate Materials	(7.4%)	2.5%	7.4%	14.6%
組立加工	Parts Manufacturing and Assembly	(3.4%)	0.0%	1.0%	1.8%
環境・リサイクル	Environmental Engineering & Metals Recycling	(5.7%)	7.1%	6.0%	5.6%
エンジニアリング・サービス等	Engineering & Services	3.1%	3.7%	4.2%	5.1%
連結	Consolidated	(6.3%)	4.7%	6.6%	9.0%
資産(期末)	Allocated assets at fiscal year-end				
鉱山・基礎素材	Mining & Fundamental Materials	113,023	139,698	115,923	118,551
中間素材	Intermediate Materials	128,575	180,762	206,043	179,752
組立加工	Parts Manufacturing and Assembly	99,349	111,518	105,497	109,876
環境・リサイクル	Environmental Engineering & Metals Recycling	39,402	41,199	39,447	32,336
エンジニアリング・サービス等	Engineering & Services	58,196	47,282	57,670	60,842
消去または全社	Elimination	(28,288)	(34,224)	(41,185)	(41,134)
連結	Consolidated	410,258	486,238	483,397	460,225
投下資本営業利益率	Ratio of operating income to *allocated assets (* average of beginning and end)				
鉱山・基礎素材	Mining & Fundamental Materials	(7.6%)	9.8%	9.4%	4.1%
中間素材	Intermediate Materials	(8.3%)	3.1%	9.5%	18.3%
組立加工	Parts Manufacturing and Assembly	(3.8%)	0.1%	1.5%	2.7%
環境・リサイクル	Environmental Engineering & Metals Recycling	(7.2%)	12.2%	8.9%	6.9%
エンジニアリング・サービス等	Engineering & Services	4.2%	6.2%	7.6%	8.0%
連結	Consolidated	(6.0%)	5.8%	8.2%	10.4%
減価償却費	Depreciation				
鉱山・基礎素材	Mining & Fundamental Materials	8,064	6,068	4,566	6,117
中間素材	Intermediate Materials	14,388	17,095	16,878	15,113
組立加工	Parts Manufacturing and Assembly	6,902	6,113	5,535	4,817
環境・リサイクル	Environmental Engineering & Metals Recycling	2,760	1,844	1,456	1,341
エンジニアリング・サービス等	Engineering & Services	419	372	457	468
消去または全社	Elimination	(145)	(1,161)	(286)	(209)
連結	Consolidated	32,390	30,333	28,608	27,650
資本的支出	Capital expenditures				
鉱山・基礎素材	Mining & Fundamental Materials	5,814	10,216	7,664	9,613
中間素材	Intermediate Materials	15,568	18,771	25,141	27,170
組立加工	Parts Manufacturing and Assembly	7,609	6,834	5,418	6,978
環境・リサイクル	Environmental Engineering & Metals Recycling	3,400	3,323	2,427	2,092
エンジニアリング・サービス等	Engineering & Services	181	107	416	287
消去または全社	Elimination	(149)	(5)	(759)	(966)
連結	Consolidated	32,424	39,248	40,309	45,176

事業別セグメント情報 Business Segment Information

2005/3	2004/3	2003/3	2002/3	2001/3	2000/3	備考 Notes
※ ()内の数字は負数を表しております						
78,077	77,442	116,453	134,294	147,768	146,304	
176,008	143,179	142,193	135,252	169,768	145,861	
145,657	136,007	85,455	86,664	93,111	88,581	
31,574	26,922	22,247				⇒ 03/3期に新設しております
66,595	55,263	52,687	58,943	77,547	60,270	<i>Newly established in FY 03/3.</i>
(59,770)	(44,889)	(40,428)	(41,712)	(64,489)	(46,294)	
438,143	393,928	378,608	373,442	423,707	394,722	
2,677	2,032	1,638	5,449	4,834	5,780	
30,583	20,030	14,443	11,495	34,087	21,221	
4,981	4,440	5,700	6,054	5,274	5,295	
2,378	1,896	1,176				
3,173	2,752	1,876	1,582	2,102	3,029	
721	883	904	310	453	148	
44,515	32,035	25,740	24,893	46,752	35,474	
3.4%	2.6%	1.4%	4.1%	3.3%	4.0%	
17.4%	14.0%	10.2%	8.5%	20.1%	14.5%	
3.4%	3.3%	6.7%	7.0%	5.7%	6.0%	
7.5%	7.0%	5.3%				
4.8%	5.0%	3.6%	2.7%	2.7%	5.0%	
10.2%	8.1%	6.8%	6.7%	11.0%	9.0%	
105,980	98,703	118,853	149,415	150,869	150,673	
152,626	146,832	155,531	168,371	188,937	161,076	
102,591	100,172	53,562	56,433	65,127	68,019	
30,288	27,822	20,211				
49,316	52,183	49,602	54,742	52,611	56,787	
(31,784)	(33,169)	(26,875)	(35,360)	(32,716)	(24,454)	
409,019	392,545	370,886	393,603	424,829	412,103	
<i>of fiscal year)</i>						
2.6%	1.9%	1.4%	3.6%	3.2%	3.8%	
20.4%	13.2%	8.9%	6.4%	19.5%	13.0%	
4.9%	5.8%	10.6%	10.0%	7.9%	7.8%	
8.2%	7.9%	5.8%				
6.3%	5.4%	3.6%	2.9%	3.8%	4.8%	
11.1%	8.4%	6.7%	6.1%	11.2%	8.4%	
5,952	6,110	8,038	8,465	8,233	8,632	
13,161	12,472	14,915	13,753	11,207	9,449	
4,537	4,731	2,871	3,325	4,092	3,598	
1,223	1,097	885				
590	674	746	808	848	901	
(222)	(240)	(250)	(70)	(153)	(208)	
25,242	24,846	27,207	26,283	24,228	22,372	
7,523	4,899	4,855	7,840	8,772	4,753	
17,236	10,009	11,278	16,365	21,507	9,669	
5,936	4,841	3,546	2,977	4,744	3,743	
2,054	1,755	953				
284	267	258	293	372	296	
(121)	-	(99)	(508)	(552)	-	
32,913	21,773	20,794	26,969	34,844	18,463	

設立以来の業績推移 Performance since Establishment

(百万円 Millions of yen)

決算期 Fiscal year ended March	売上高 Net sales	営業利益 Operating income	経常利益 Recurring income	当期純利益 Net income	総資産 Total assets	自己資本 Shareholders' equity	1株配当 Dividends per share	
2009/3	427,191	(27,031)	(30,310)	(67,256)	410,258	94,145	-	
2008/3	595,463	27,993	41,780	7,830	486,238	184,995	¥12.0	
2007/3	591,518	38,865	56,585	31,370	483,397	185,513	¥12.0	
2006/3	503,370	45,052	50,487	23,374	460,225	159,772	¥10.0	
2005/3	438,143	44,515	45,433	20,780	409,019	133,963	¥7.0	
2004/3	393,928	32,035	29,702	11,452	392,545	115,398	¥5.0	
2003/3	378,608	25,740	21,226	3,085	370,886	103,237	¥5.0	
2002/3	373,442	24,893	18,760	1,986	393,603	105,219	¥5.0	
2001/3	423,707	46,752	38,113	17,012	424,829	105,936	¥6.0	
2000/3	394,722	35,474	27,847	14,181	412,103	83,489	¥6.0	
1999/3	400,399	35,295	24,786	12,344	433,647	55,269	¥5.0	
1998/3	426,724	37,498	22,056	9,581	456,963	46,091	¥5.0	
1997/3	400,349	28,482	16,208	5,414	462,313	38,838	¥4.0	
1996/3	370,433	23,632	9,747	7,606	458,449	35,018	¥3.0	
1995/3	342,311	12,652	562	(9,125)	454,257	19,313	-	
1994/3	317,127	9,010	(4,004)	(5,173)	448,208	29,768	-	
1993/3	336,521	10,283	(2,455)	(4,281)	436,681	33,791	¥4.0	
1992/3	454,785	18,652	5,161	4,757	434,552	43,907	¥4.0	
1991/3	511,005	29,458	12,762	6,423	440,244	41,834	¥4.0	
1990/3	405,902	30,830	17,978	10,725	398,420	38,307	¥4.0	
1989/3	314,667	24,653	15,038	5,723	365,853	24,031	-	
1988/3	315,931	13,706	5,185	4,260	351,131	16,889	-	
1987/3	289,690	8,493	(645)	(9,803)	305,482	12,351	-	
1986/3	310,053	10,900	(304)	(3,200)	310,672	20,252	-	
1985/3	313,451	21,228	7,752	5,142	309,563	23,510	-	
1984/3	311,427	17,122	4,014	2,274	284,450	17,430	-	
1983/3	284,250	13,942	(2,319)	(275)	294,712	18,980	-	
1982/3	286,229	14,542	(4,604)	(4,936)	305,435	18,892	-	
1981/3	302,748	14,013	(2,966)	(373)	294,677	23,822	-	連結 Consolidated
1980/3	310,426	21,772	7,886	4,466	312,745	23,495	-	↑
1979/3	200,059	1,151	(7,184)	(6,363)	274,557	19,051	-	
1978/3	209,157	4,515	(8,063)	(6,054)	266,671	25,431	-	
1978/3	188,239	1,379	(8,217)	(4,593)	232,201	27,718	-	
1977/3	204,423	12,323	1,562	1,738	251,801	34,285	¥4.0	
1976/3	166,444	10,312	930	2,640	248,172	35,012	¥5.0	↓ 単独 Non-consolidated
1975/3	204,390	13,585	6,900	2,337	205,114	33,271	¥5.0	
1974/3	202,691	19,887	8,534	1,915	199,891	24,403	¥2.5	
1973/3	129,349	5,964	899	(507)	148,684	22,488	-	
1972/3	114,496	3,967	545	545	145,969	23,652	¥4.5	
1971/3	116,880	3,625	1,125	1,834	132,670	24,641	¥5.5	
1970/3	118,582	7,344	3,671	1,828	120,525	19,164	¥5.0	
1969/3	89,690	3,693	1,360	844	99,322	18,438	¥5.0	
1968/3	76,983	3,365	1,766	1,365	91,102	18,689	¥5.0	
1967/3	69,912	4,272	N/A	1,471	69,083	18,423	¥5.0	
1966/3	57,201	4,269	N/A	1,204	64,755	18,051	¥5.0	
1965/3	50,101	3,236	N/A	1,293	57,569	17,820	¥5.0	
1964/3	41,344	2,877	N/A	843	50,402	14,021	¥5.0	
1963/3	33,495	1,758	N/A	816	45,738	13,908	¥5.5	
1962/3	33,012	2,397	N/A	922	38,075	11,471	¥6.0	
1961/3	28,952	2,519	N/A	865	33,091	11,139	¥6.0	
1960/3	25,935	2,567	N/A	922	27,532	10,935	¥7.5	
1959/3	21,428	2,039	N/A	832	26,095	10,747	¥7.5	
1958/3	20,702	2,483	N/A	735	21,989	8,042	¥9.0	
1957/3	22,334	2,770	N/A	820	18,730	7,756	¥9.0	
1956/3	18,613	2,137	N/A	707	17,928	7,384	¥9.0	
1955/3	16,969	2,157	N/A	675	17,415	7,126	¥12.5	
1954/3	17,478	2,429	N/A	778	15,894	5,869	¥15.0	
1953/3	15,010	1,718	N/A	858	13,985	5,505	¥15.0	
1952/3	18,805	3,601	N/A	1,293	12,237	5,071	¥20.0	
1951/3	11,075	2,112	N/A	1,004	6,757	2,788	¥18.75	
設立時 as of establishment in May 1950					2,809	600		

注) 63/3期以前につき現行基準に合わせるため貸倒引当金・税金引当金の組替えを行っております。
Note: Some adjustments have been made for FY 63/3 and before regarding doubtful loan reserve and tax reserve in order to maintain consistency with current accounting standards.

■取締役 Board of Directors

代表取締役社長 <i>President</i> <i>Representative Director</i>	竹 林 義 彦 <i>TAKEBAYASHI, Yoshihiko</i>	CEO(最高経営責任者)、COO(最高業務執行責任者) <i>Chief Executive Officer</i> <i>Chief Operating Officer</i>
代表取締役 <i>Representative Director</i>	城 後 知 明 <i>JOGO, Tomoharu</i>	専務執行役員 <i>Senior Managing Executive Officer</i>
取締役 <i>Directors</i>	平 野 一 夫 <i>HIRANO, Kazuo</i>	常務執行役員 <i>Senior Executive Officer</i>
	蓮 尾 充 彦 <i>HASUO, Mitsuhiro</i>	常務執行役員 <i>Senior Executive Officer</i>
	樋 口 修 <i>HIGUCHI, Osamu</i>	常務執行役員、CRO(最高危機管理責任者) <i>Senior Executive Officer</i> <i>Chief Risk Management Officer</i>
	樋 口 徹 <i>HIGUCHI, Toru</i>	常務執行役員、CFO(最高財務責任者) <i>Senior Executive Officer</i> <i>Chief Financial Officer</i>
	仙 田 貞 雄 <i>SENDA, Sadao</i>	常務執行役員 <i>Senior Executive Officer</i>
	宮 村 眞 平 <i>MIYAMURA, Shimpei</i>	相談役 <i>Senior Adviser</i>
社外取締役 <i>Outside Director</i>	柴 田 裕 通 <i>SHIBATA, Hiromichi</i>	

■監査役 Corporate Auditors

常勤監査役 <i>Standing Auditors</i>	高 井 龍 彦 <i>TAKAI, Tatsuhiko</i>	小 佐 野 明 <i>OSANO, Akira</i>
社外監査役 <i>Outside Auditors</i>	鎌 田 吉 郎 <i>KAMATA, Yoshiro</i>	佐 藤 順 哉 <i>SATO, Junya</i>

■上席執行役員 Senior Executive Officers

三 森 繁 <i>MITSUMORI, Shigeru</i>	CTO(最高技術責任者) <i>Chief Technology Officer</i>
上 川 満 <i>UEKAWA, Mitsuru</i>	

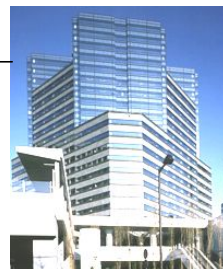
■執行役員 Executive Officers

桜 井 若 葉 <i>SAKURAI, Wakaba</i>	黒 田 英 男 <i>KURODA, Hideo</i>	福 田 誠 <i>FUKUDA, Makoto</i>	佐 藤 敬 <i>SATO, Takashi</i>
渡 辺 浩 介 <i>WATANABE, Kosuke</i>	隅 田 洋 <i>SUMIDA, Hiroshi</i>	藤 井 純 <i>FUJII, Jun</i>	渋 江 隆 雄 <i>SHIBUE, Takao</i>
坂 井 治 文 <i>SAKAI, Harufumi</i>	住 伸 一 <i>SUMI, Shinichi</i>	田 中 順 一 郎 <i>TANAKA, Junichiro</i>	森 田 正 久 <i>MORITA, Masahisa</i>
中 村 博 道 <i>NAKAMURA, Hiromichi</i>	原 川 誠 一 <i>HARAKAWA, Seiichi</i>	名 井 肇 <i>MYOI, Hajime</i>	

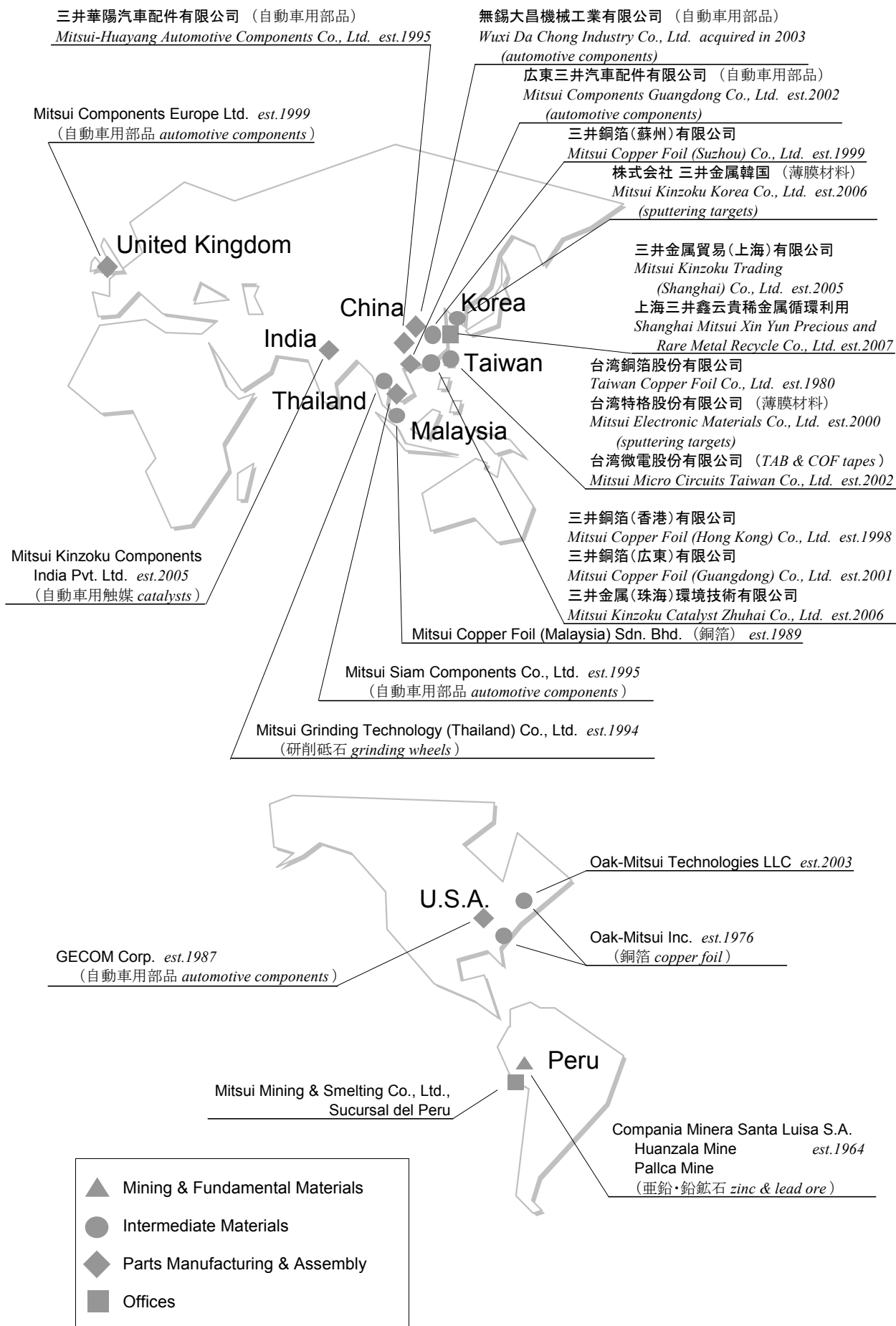
主要事業所・関係会社 Major Plants and Offices

《国内 Japan》

※西暦年号は会社設立年(または取得年)



《海外 Overseas》



■前史

Prehistory

養老年間 神岡地域で初めて銅山が開坑されたといわれる

It is said that a copper mine was developed in the Kamioka area in the early eighth century.

明治7年 三井組が神岡で鉱山経営を開始

In 1874, the Mitsui Clan began mining operations in Kamioka.

明治44年 三井鉱山株式会社設立

In 1911, Mitsui Mining Co., Ltd. was established

昭和25年 三井鉱山株式会社の金属部門が神岡鉱業株式会社として分離（昭和27年に三井金属鉱業株式会社と改称）

In 1950, the metals division of Mitsui Mining Co. was separated as Kamioka Mining & Smelting Co., Ltd.

(renamed Mitsui Mining & Smelting Co., Ltd. in 1952)

■設立

Established

昭和25年5月1日

May 1, 1950

■資本金

Paid-in capital

42,129百万円

JPY 42,129 million

■従業員数(連結)

Number of employees

11,189名

■発行済株式総数

Total number of shares issued

572,966,166株

■上場取引所

Stock listings

東京・大阪証券取引所

Tokyo and Osaka domestic stock exchanges

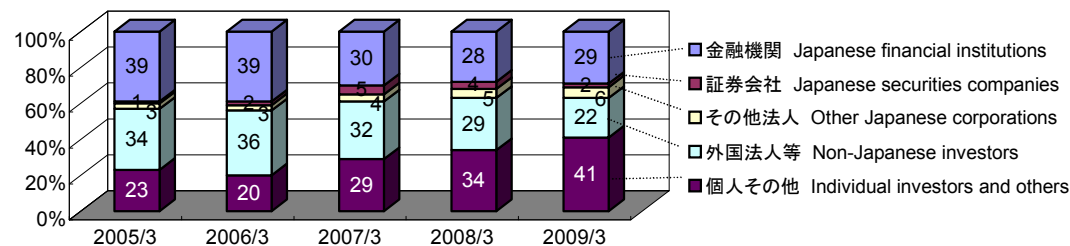
■株主数

Number of shareholders

65,596名

■株主構成

Distribution of shareholders



■主要株主

Principal shareholders

日本トラスティ・サービス信託銀行株式会社(信託口4G)
Japan Trustee Services Bank, Ltd. (Held in trust account 4G)

持株比率

Percentage of shares held

6.79%

日本トラスティ・サービス信託銀行株式会社(信託口)
Japan Trustee Services Bank, Ltd. (Held in trust account)

6.30%

日本マスタートラスト信託銀行株式会社(信託口)
The Master Trust Bank of Japan, Ltd. (Held in trust account)

4.07%

三井金属社員持株会
The Employees' Shareholding Association

1.42%

メロン バンク エヌイー アズ エージェント フォー イッツ クライアント
メロン オムニバス ユーエス ペンション
Mellon Bank, N.A. as Agent for its Client Mellon Omnibus US Pension

1.41%

三井生命保険株式会社
Mitsui Life Insurance Company, Limited

1.39%

日本トラスティ・サービス信託銀行株式会社(信託口4)
Japan Trustee Services Bank, Ltd. (Held in trust account 4)

1.37%

アイリスオーヤマ株式会社
IRISOHYAMA Inc.


1.27%

オーディ05 オムニバス チャイナ トリーティ 808150
SSBT OD05 OMNIBUS ACCOUNT CHINA TREATY CLIENTS

0.95%

シティバンク ホンコン エス/エイ ファンド 115
Citibank Hong Kong S/A Fund 115

0.87%



お問合せ先

三井金属鉱業株式会社 経営企画部広報室

〒141-8584 東京都品川区大崎一丁目11番1号

電話 03-5437-8028 ファックス 03-5437-8029

電子メール PR@mitsui-kinzoku.co.jp

ホームページ <http://www.mitsui-kinzoku.co.jp/>

Contact :

**Investor & Public Relations
MITSUI MINING & SMELTING CO., LTD.**

1-11-1 Osaki, Shinagawa-ku, Tokyo 141-8584 Japan

Phone 81-3-5437-8028 Facsimile 81-3-5437-8029

E-mail PR@mitsui-kinzoku.co.jp

URL <http://www.mitsui-kinzoku.co.jp/>