



NEWS RELEASE

March 17, 2016

Notice Regarding Changes of Research and Development Organizations

Mitsui Mining & Smelting Co., Ltd. (hereinafter Mitsui Kinzoku) (President: Sadao Senda) hereby announces that a meeting of the Board of Directors held today resolved to change the research and development organizations as of April 1, 2016.

Changes of the Organization

Mitsui Kinzoku transferred its research and development function to the Engineered Materials Sector on April 1, 2014 to accelerate the “continuous pursuit of new growth potential” under the 2013 Medium-Term Management Plan, the final year of which is the current fiscal year. The changes of the research and development organizations announced here aim to further accelerate the company’s research and development efforts towards the next medium-term management plan.

1. Purposes and basic policies

- 1) Mitsui Kinzoku positions the R&D Center’s “vision for ten years from now” as “an organization which continues to create unique new products and technologies by connecting the unique core technologies it has accumulated to needs in growth markets.” To achieve this vision, Mitsui Kinzoku has decided to change its system and structure.
- 2) By consolidating research and development organizations related to engineered materials, Mitsui Kinzoku will realize “centralized management” of its research and development processes,” “synergy between its research organizations,” and “consolidation and accumulation of element technologies.” The realization of these aims will enable Mitsui Kinzoku to accelerate the development of new materials and the accumulation of technologies.
- 3) By integrating the organizations related to material structure and function exploration under the Material Analysis & Exploration Center with the R&D Center, Mitsui Kinzoku will facilitate the application of methods of computational science and structural analysis, and accelerate the progress of research on specific themes.

2. Details of the changes

- 1) The New Product & Process Development Center I and New Product & Process Development Center II will be integrated with the R&D Center. Section I, Section II, and Section III will be established as organizations that work on the themes of energy, electronics, and the development of other new materials, respectively.
- 2) The Materials Structure & Function Exploration Center, Administration Office, and Safety &

Environmental Affairs Office of the Material Analysis & Exploration Center will be transferred to the R&D Center. At the same time, the Planning Office will be strengthened and given the function of exploring new themes.

- 3) The development section of the Battery Materials Division will be integrated with the R&D Center, and the Battery Materials Project Team will be established. This new team will accelerate the development and launch of new battery materials onto the market.

The new organization chart is shown in the attachment.

End.

(For more details, please contact the following office)

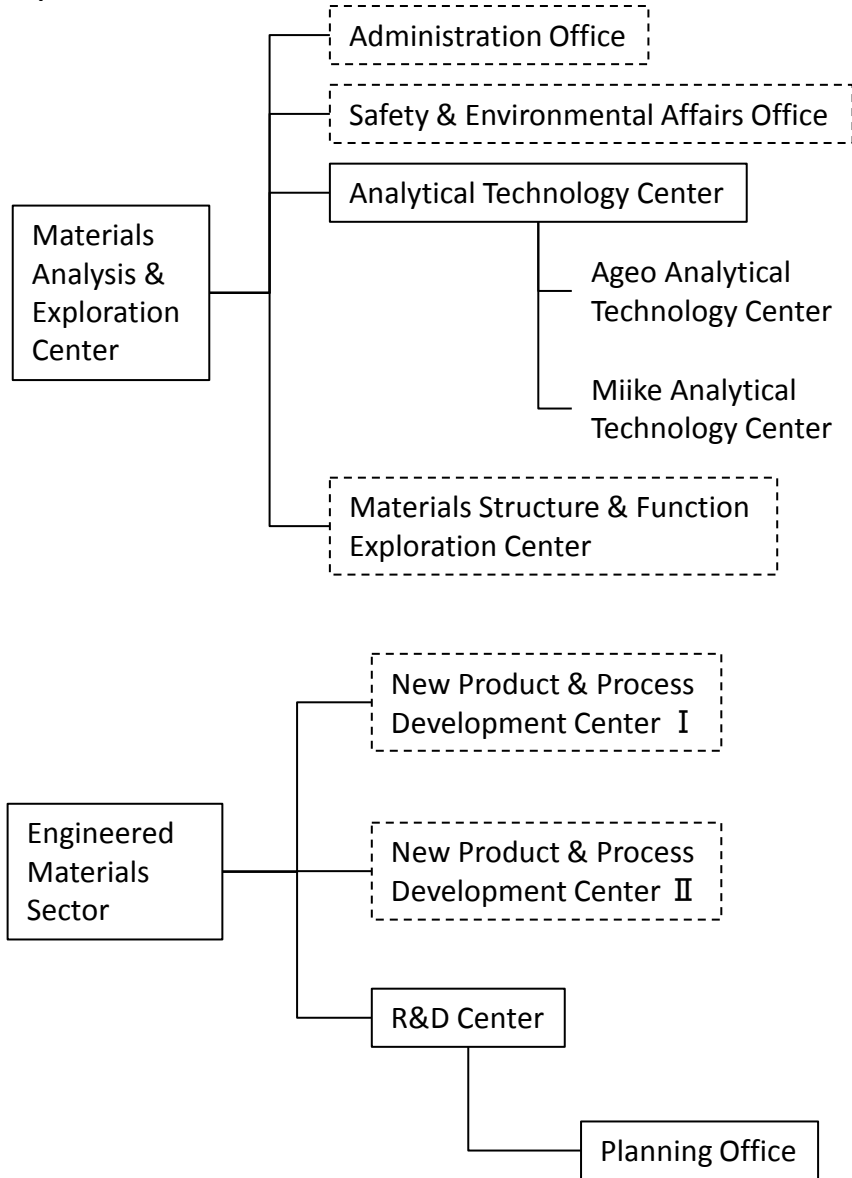
Corporate Communications Department


Corporate Planning & Control Sector

Mitsui Mining & Smelting Co., Ltd.

E-mail ; PR@mitsui-kinzoku.co.jp

【present】



 :Departments that are integrated into the R&D Center

【as of April 1, 2016】

