



February 1, 2018

NEWS RELEASE

Increase in Production Capacity of Ultra-Fine Copper Powder for MLCC

Approx. 40% increase in production capacity of engineered powders plant at Hikoshima Smelting Co., Ltd.

Mitsui Mining & Smelting Co. Ltd. (President: Keiji Nishida; “Mitsui Kinzoku,” hereinafter) is pleased to announce that it has decided to increase the production capacity of ultra-fine copper powder for MLCC^{*1} by approx. 40%

The ultra-fine copper powder features particle sizes ranging from less than one micrometer to several micrometers, refined using the wet reduction method. It is produced at the engineered powders plant of Hikoshima Smelting Co., Ltd. in the Engineered Powder Division in the Engineered Materials Sector. The plant is located in Yamaguchi Prefecture. Mitsui Kinzoku mainly supplies highly functional copper powder, which is based on powder control technologies for regulating particular diameters, distribution, forms and surface treatments, and is broadly utilized in the electrodes and wiring of electronic components.

As a leading manufacturer of copper powder for the external electrodes of MLCCs, Mitsui Kinzoku produces ultra-fine copper powder as one of its main products. In the past several years, more MLCCs are mounted in line with the functional enhancement of smartphones, demand for ultra-fine copper powder is increasing. Additionally, it is anticipated that home electronic appliances and the industrial world will introduce IoT and more and more automobiles will be equipped with ADAS^{*2} and other electric systems with a view towards the realization of Society 5.0^{*3}. To meet the growing demand for MLCCs, Mitsui Kinzoku will erect an additional production plant for the ultra-fine copper line to boost the production capacity by approx. 40%. The new line will start operation from September 2018.

Under its slogan of Material Intelligence, Mitsui Kinzoku will be working to ensure stable quality and sufficient supply to customers and will take future actions on equipment in response to demand trends.

[Inquiries]

Investor Relations & Corporate Communications Dept.,

Corporate Planning & Control Sector,

Mitsui Mining & Smelting Co., Ltd.

Phone: +81-3-5437-8028, Fax: +81-3-5437-8029

E-mail: PR@mitsui-kinzoku.co.jp

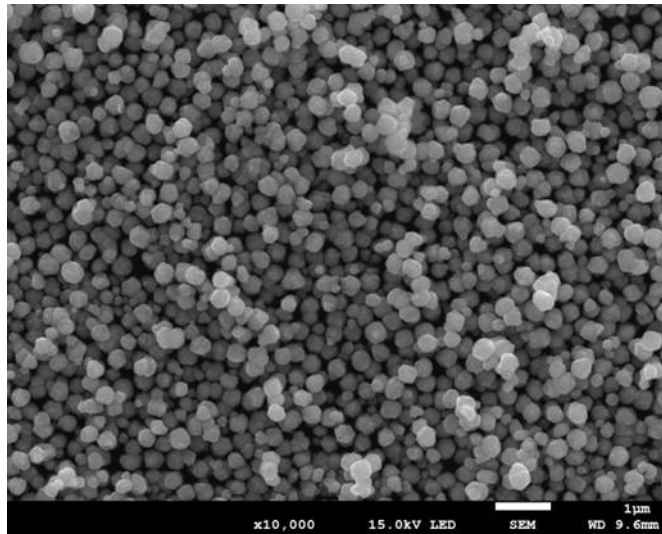


Photo : Ultra-fine copper powder

(Notes)

*1 MLCC: Stands for *Multi-Layer Ceramic Capacitor*.

*2 ADAS: Stands for Advanced Driver Assistance System.

*3 Society 5.0: A human-centered society proposed by the Cabinet Office, in which cyberspace and the physical (real) world are highly integrated to achieve economic growth and the resolution of social issues.

(Reference)

Hikoshima Smelting Co., Ltd.

- | | |
|-------------------------|--|
| (1) Location: | Shimonoseki, Yamaguchi Prefecture, Japan |
| (2) President: | Akira Nishijima |
| (3) Established: | May 1986 |
| (4) Capital: | 460 million yen |
| (5) Investment: | Mitsui Kinzoku (100%) |
| (6) Business Activities | Manufacturing of zinc ingots, zinc oxysulfate, ultra-fine powder, materials for batteries and others |